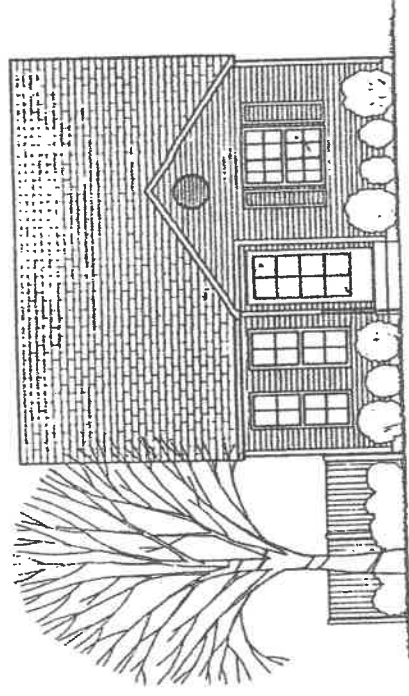


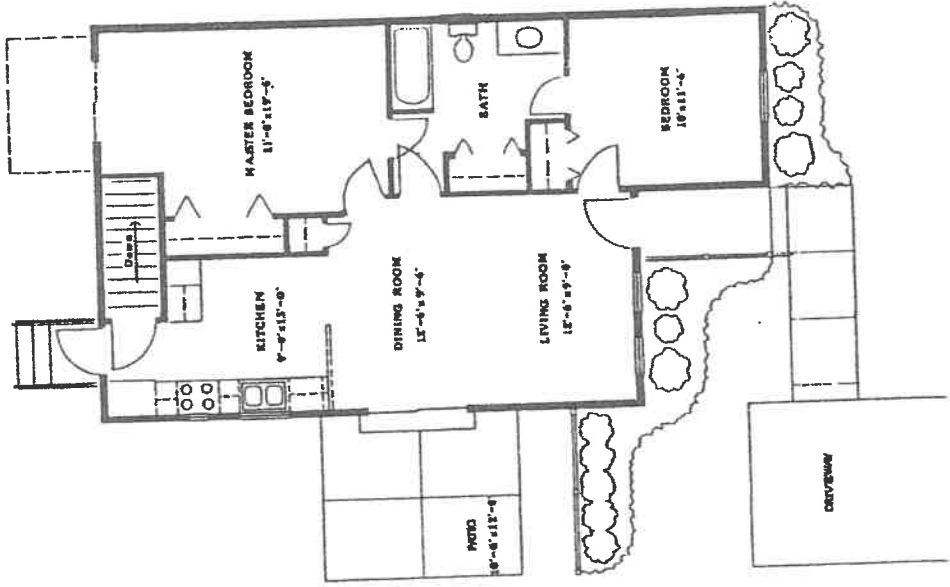
HOME TYPES

Alvord Place Community

The Almanac • 880 SF



- 2 Bedrooms
- Full Basement
- Private Patio
- Several Options Available



Sizes approximate. Exact layout subject to change.

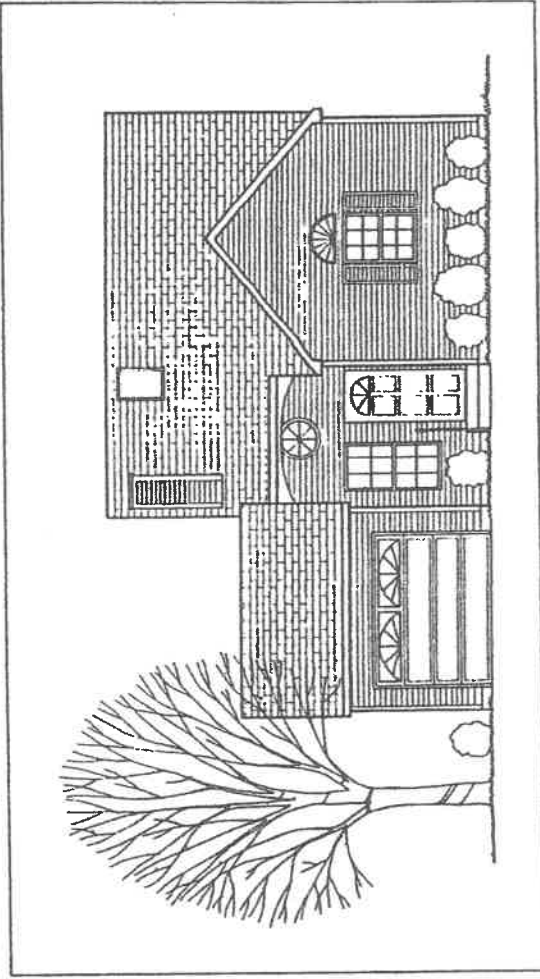
ALVORD PLACE COMMUNITY

HOME TYPES

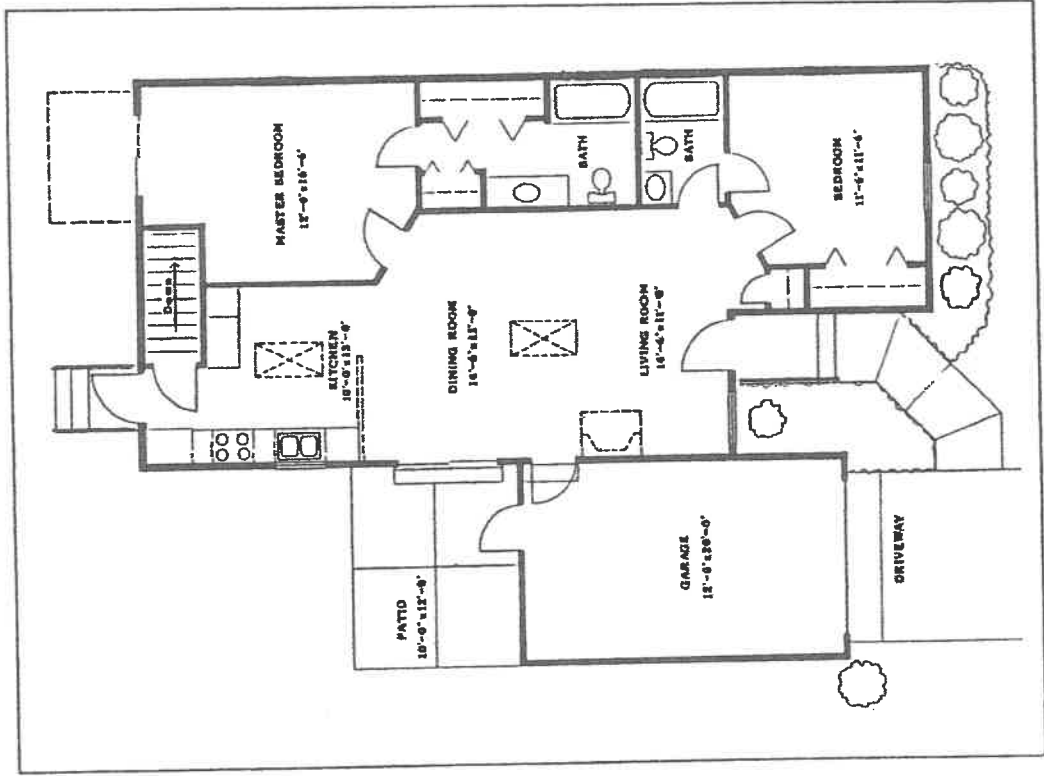


Alvord Place Community

The Harvest II • 1,044 SF



- 2 Bedrooms
- 2 Baths
- Vaulted Ceiling
- Attached Garage Included
- Full Basement
- Private Patio
- Several Options Available



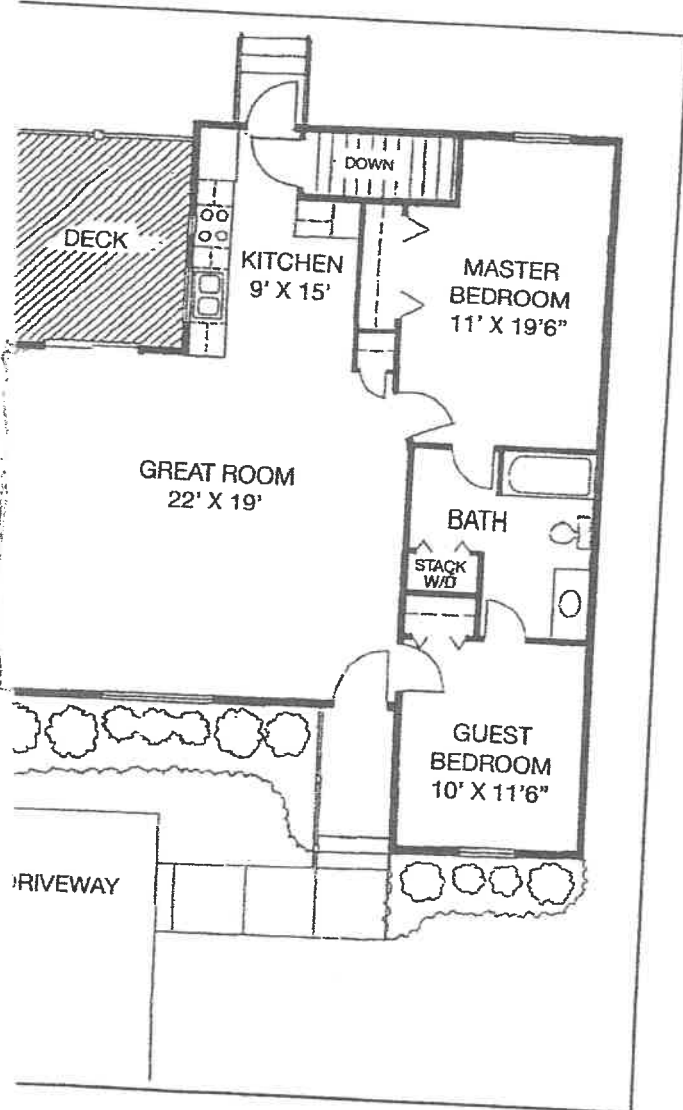
Sizes approximate. Exact layout subject to change.

the ALMANAC II



PRICE: \$109,900
MONTHLY FEE: \$80

1,070 SF



- 2 Bedrooms
- 1 Bath
- Full Basement
- Private Deck
- Central Air Conditioning
- Bulkhead Hatchway with Inner Fire-Rated Door
- Extended Driveway
- Handrail
- General Electric Stacking Washer and Dryer on First Floor
- General Electric Appliance Package
- Recessed Lighting in Kitchen
- Several Options Available
- Walkout Basement Available for an Additional \$10,000 over Base Price



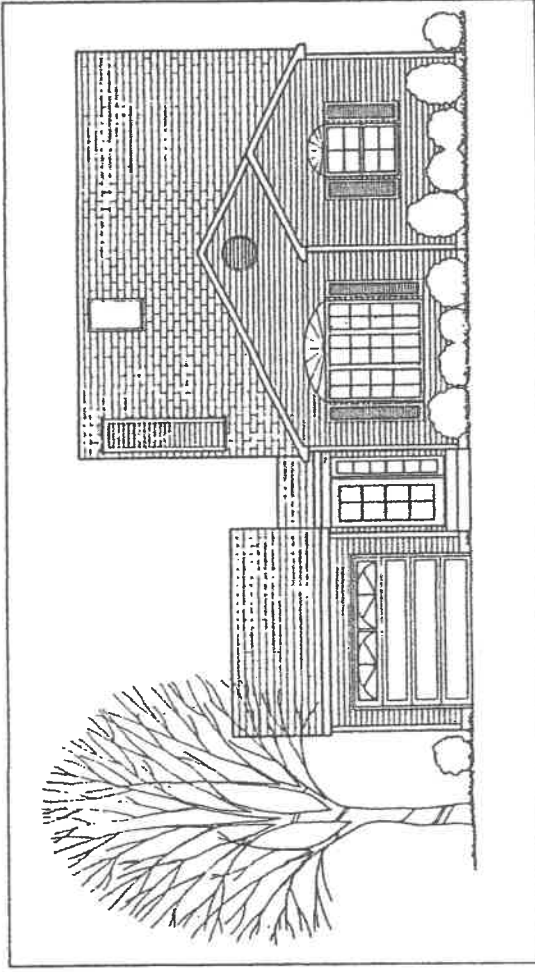
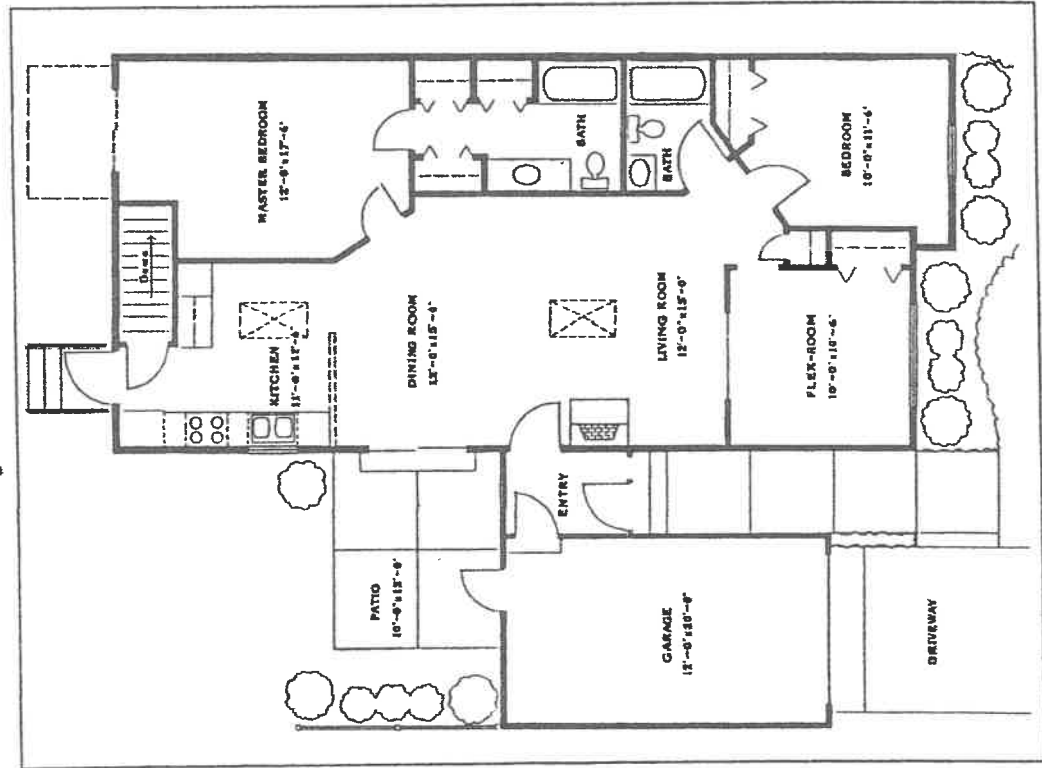
ALVORD PLACE
COMMUNITY

HOME TYPES



Alvord Place Community

The Alvord • 1,197 SF



- 2 Bedrooms
- 2 Baths
- Vaulted Ceiling
- Fireplace Included
- Attached Garage Included
- Full Basement
- Private Patio
- Several Options Available

A select number of The Alvord homes come with a two car attached garage.

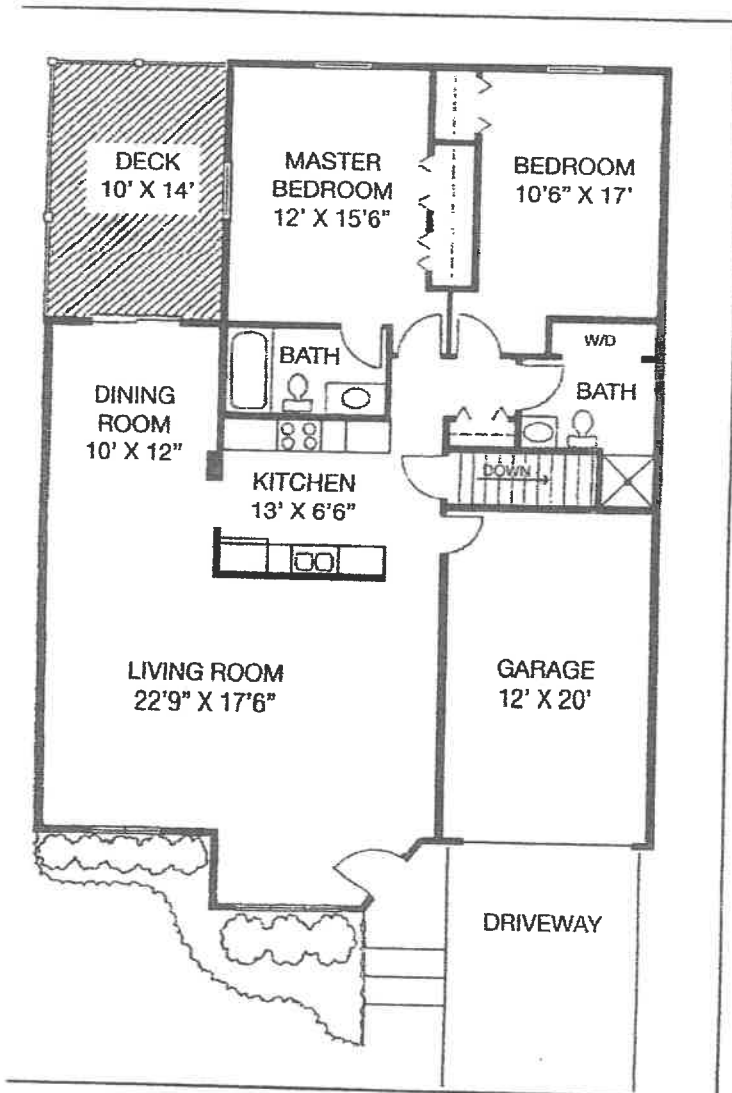
Sizes approximate. Exact layout subject to change.

The WINDROW II



PRICE \$128,900
MONTHLY FEE: \$100

1,290 SF



- 2 Bedrooms
- 2 Baths
- Full Basement
- Private Deck
- Central Air Conditioning
- Attached Garage with Remote Door Opener
- Bulkhead Hatchway with Inner Fire-Rated Door
- Handrail
- General Electric Washer and Dryer on First Floor
- General Electric Appliance Package
- Several Options Available
- Recessed Lighting in Kitchen
- Extended Driveway
- Walkout Basement Available for an Additional \$10,000 over Base Price



ALVORD PLACE
COMMUNITY