

THE SOUTHPORT®

OPTIONAL ELEVATION D



*Rendering is an artist's conception and is for illustrative purposes only.



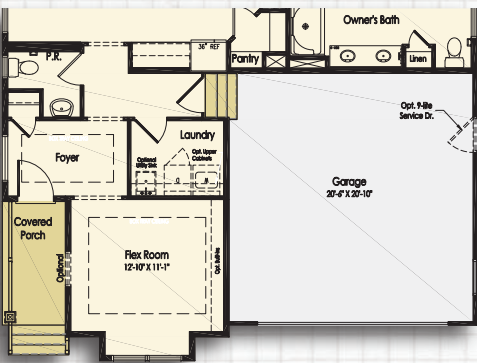
ELEVATIONS

INCLUDED ELEVATION A

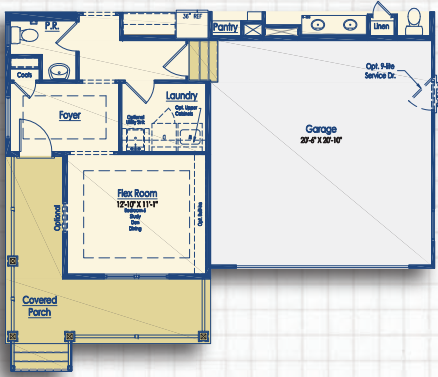
OPTIONAL ELEVATION B

OPTIONAL ELEVATION C

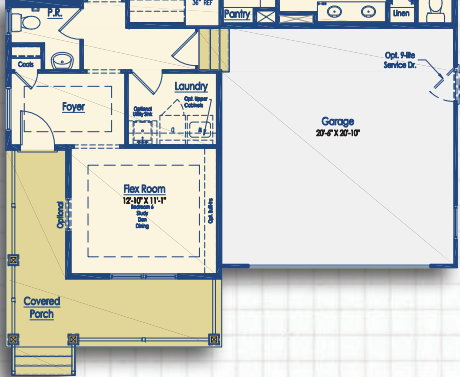
OPTIONAL ELEVATION D



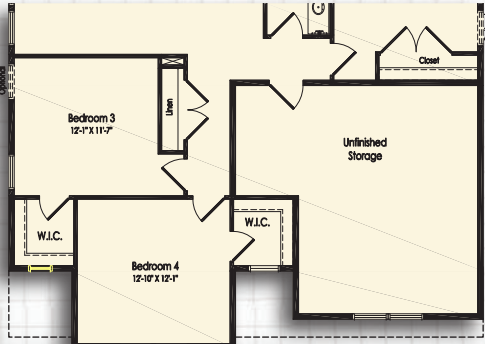
Included Elevation A
First Floor



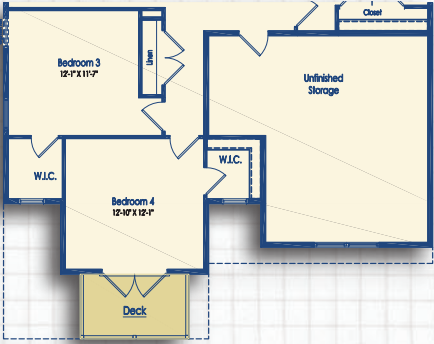
Optional Elevation B & D
First Floor



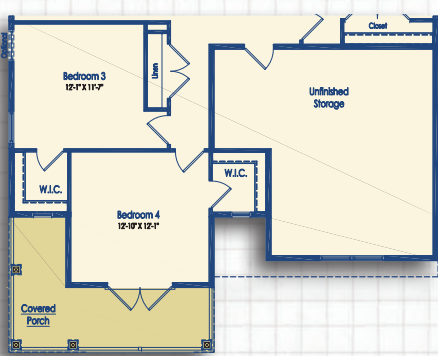
Optional Elevation C
First Floor



Included Elevation A
Second Floor



Optional Elevation B & D
Second Floor



Optional Elevation C
Second Floor

*Renderings are an artist's conception and are for illustrative purposes only.

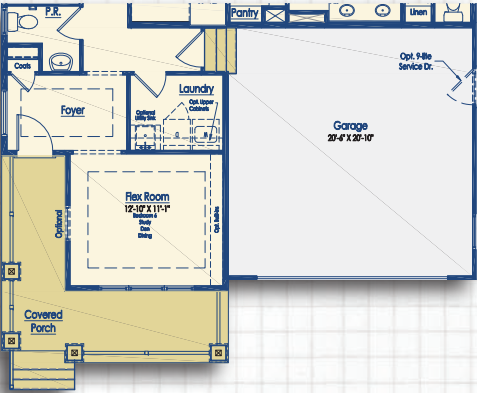
*Community requirements will determine if brick or fiber cement is available in your selected community.

ELEVATIONS

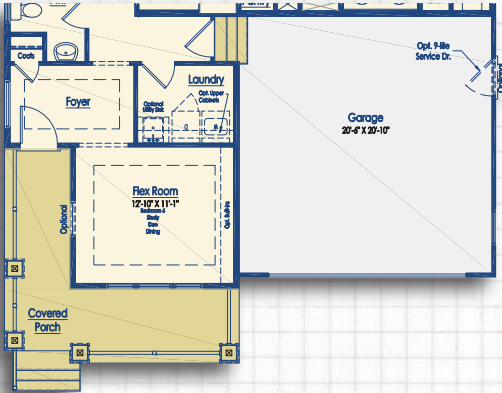
OPTIONAL CRAFTSMAN ELEVATION

OPTIONAL MODERN FARMHOUSE

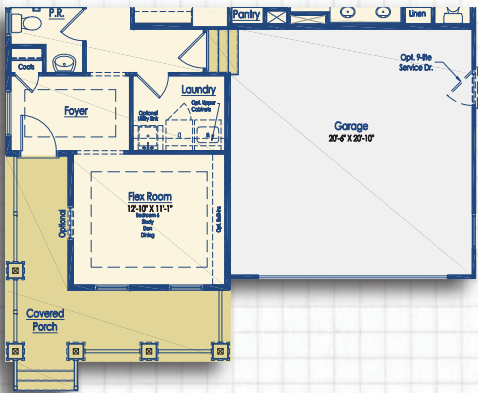
OPTIONAL ELEVATION E



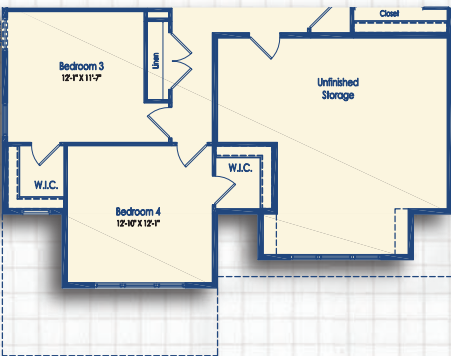
Optional Craftsman Elevation
First Floor



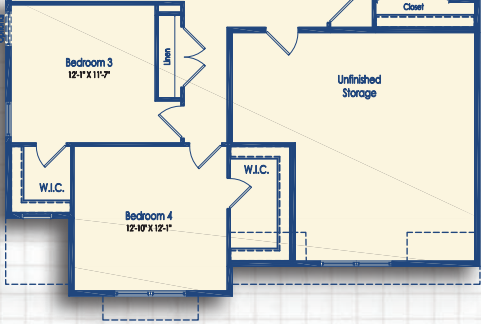
Optional Modern Farmhouse Elevation
First Floor



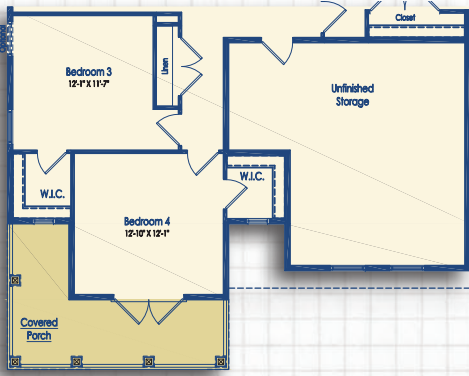
Optional Elevation E
First Floor



Optional Craftsman Elevation
Second Floor



Optional Modern Farmhouse Elevation
Second Floor



Optional Elevation E
Second Floor

FLOOR PLAN

THE SOUTHPORT

Beds	4 - 6
Baths	2.5 - 4
Heated Sq. Ft.	2,720 - 5,210
Total Sq. Ft.	3,554 - 6,550
*Floor plan dimensions are approximate.	



First Floor
Elevation A



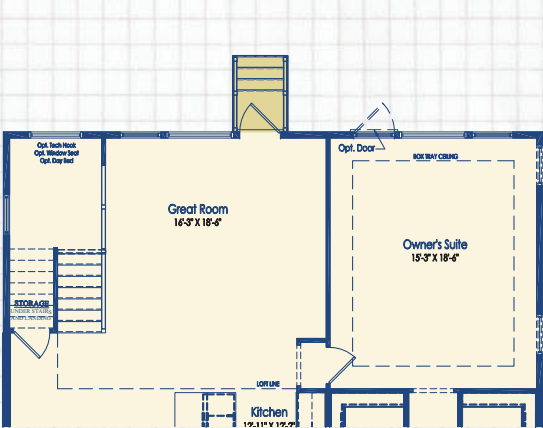
Second Floor
Elevation A

*Renderings are artist's conception. All information is subject to change without notice.

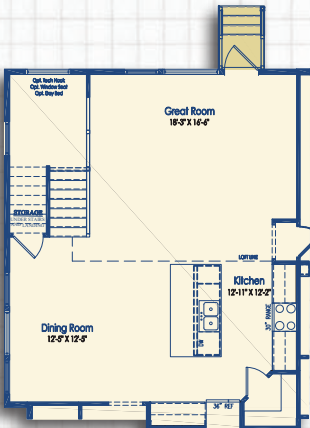
FIRST FLOOR STRUCTURAL OPTIONS

SQUARE FOOTAGE

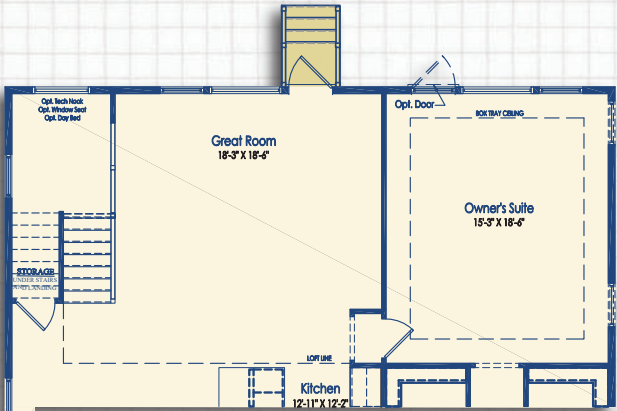
4' Owner's Suite Extension	+65
*Floor plan dimensions are approximate	



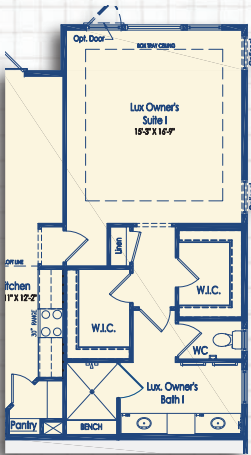
Optional 2' Rear Extension



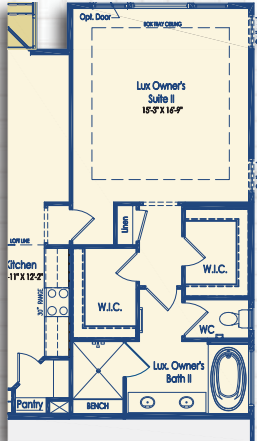
Optional 2' Side Extension



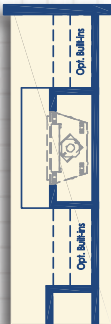
Optional 2' Side Extension and 2' Rear Extension



Optional Luxury Owner's
Suite I

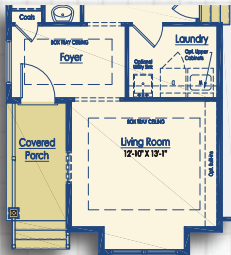


Optional Luxury Owner's
Suite II

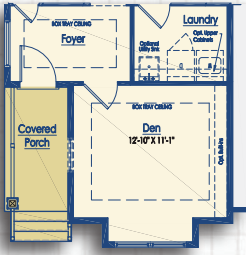


Optional Inset Fireplace

FLEX ROOM OPTIONS



Optional Living Room
Elevation A and Modern Farmhouse



Optional Den
Elevation A and Modern Farmhouse



Optional Study
Elevation A and Modern Farmhouse

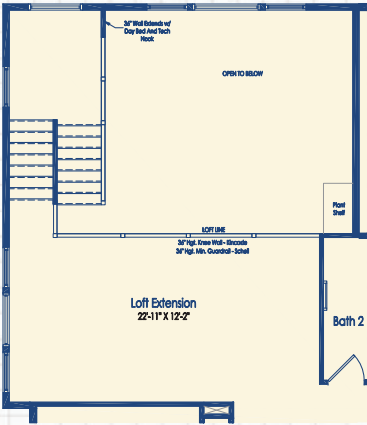


Flex Room with Alternate
Laundry Layout

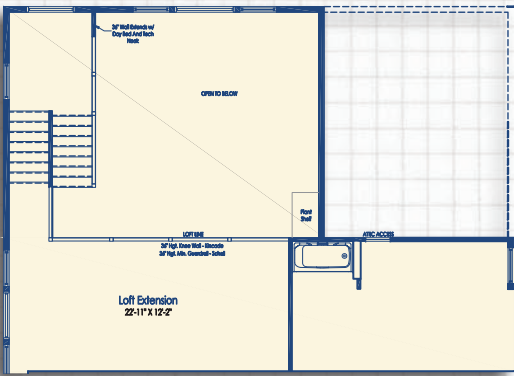


Optional Bedroom 4 with
Bath 3
Elevation B

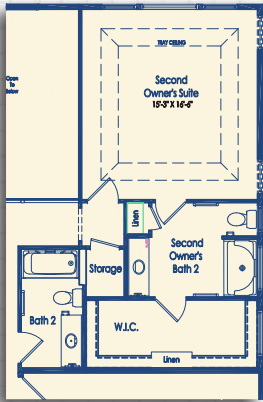
SECOND FLOOR OPTIONS



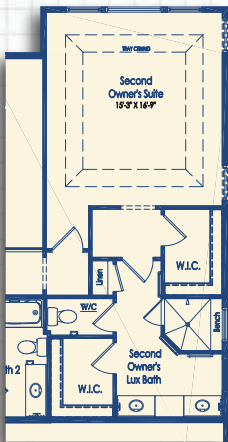
Optional Loft with 2' Side Extension



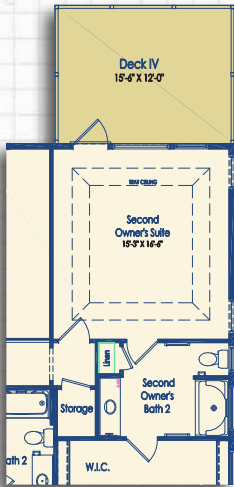
Optional Loft with 2' Side Extension and 2' Rear Extension



Optional Second Floor
Owner's Suite I



Optional Second Floor
Luxury Owner's Suite

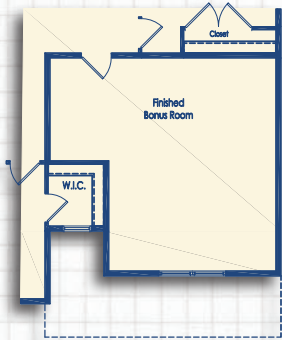


Optional Second Floor
Owner's Suite with Deck IV

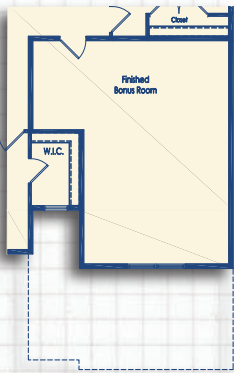


Optional Second Floor
Luxury Owner's Suite with
Deck IV

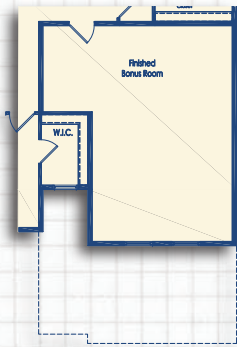
SECOND FLOOR OPTIONS



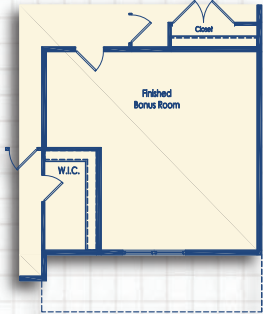
Optional Bonus Room
Elevations A, B, C, and D



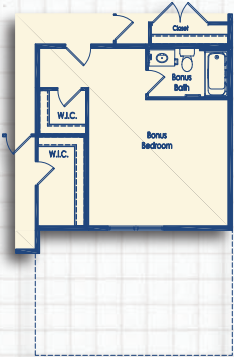
Optional Finished Bonus Room
with 3 Car Side Load Garage
Elevations A, B, C, and D



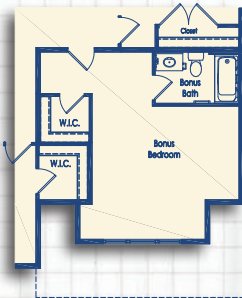
Optional Finished Bonus Room
with 4' Garage Extension
Elevations A, B, C, and D



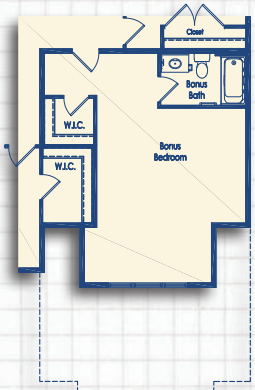
Optional Finished Bonus Room
with 4' Garage Extension
Modern Farmhouse Elevation



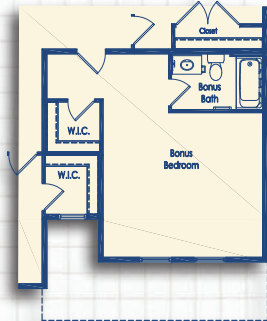
Optional Bonus Bedroom with
3-Car Garage
Modern Farmhouse Elevation



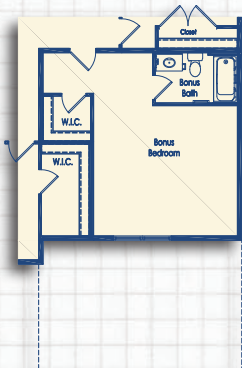
Optional Bonus Bedroom with 4'
Garage Extension
Craftsman Elevation



Optional Bonus Bedroom with
3-Car Garage
Craftsman Elevation



Optional Bonus Bedroom with 4'
Garage Extension
Elevation E



Optional Bonus Bedroom with 3
Car Side Load Garage
Elevation E

KITCHEN OPTIONS



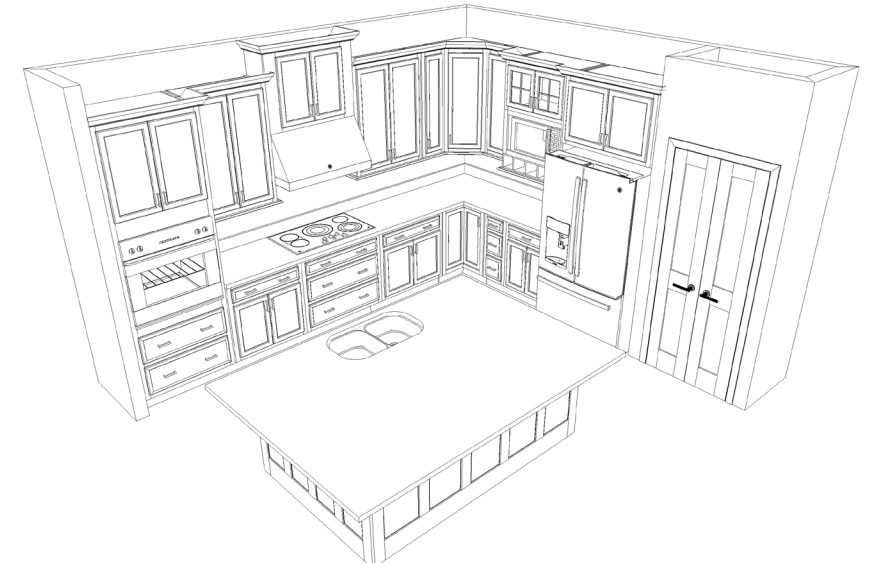
Included Kitchen has the following included features:

Select Cabinets, (1) Drawer Base with Side Mounted Drawer Slides, Small Crown, Free-Standing Range, and Microwave.



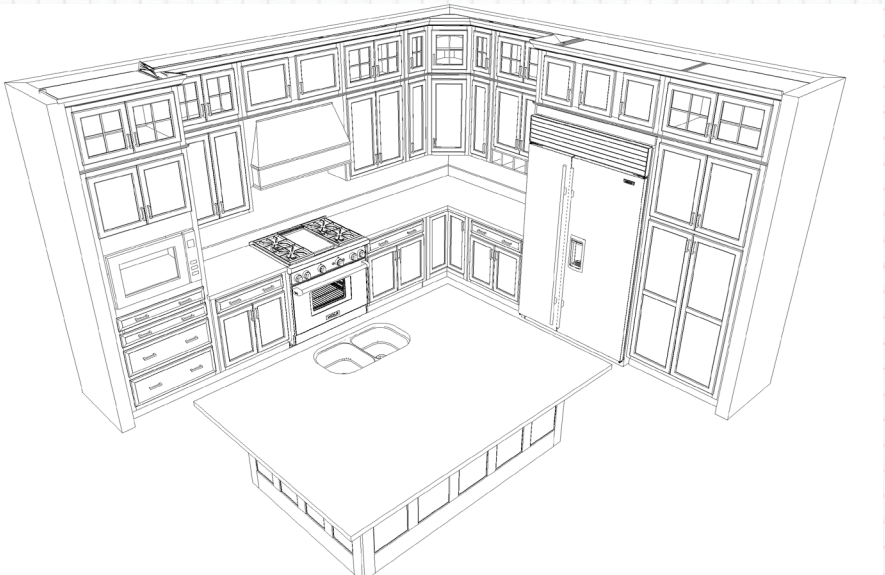
Optional Gourmet Kitchen has the following features:

Premier Series Cabinetry, Drawer Base Mix, Full Extension/Soft Close Drawers, Pull-Out Trash, High Crown, Matching End Panels, Light Rail, Glass Cabinets , 30” cooktop, Wall Oven(s), and Microwave.



Optional Professional's Kitchen has the following features:

Premier Series Cabinetry, 36” Stainless Hood, Drawer Base Mix, Full Extension/Soft Close Drawers, Pull-Out Trash, High Crown, Matching End Panels, Light Rail, Glass Cabinets, 36” cooktop, Wall Oven(s), and Built-In Microwave.

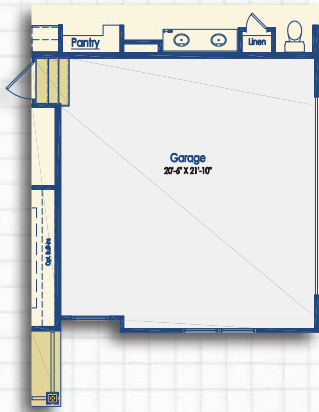


Optional Chef's Kitchen has the following features:

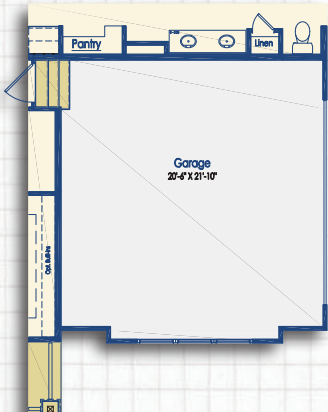
Premier Series Cabinetry, Wood Hood, Drawer Base Mix, Full Extension/Soft Close Drawers, Pull-Out Trash, High Crown, Matching End Panels, Light Rail, Glass Cabinets , 48” Monogram Refrigerator, 6-Burner Monogram Free-Standing Range, and Built-In Microwave.

GARAGE OPTIONS

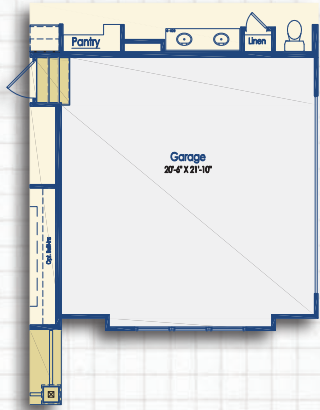
SQUARE FOOTAGE
4' Garage Extension +85
*Floor plan dimensions are approximate



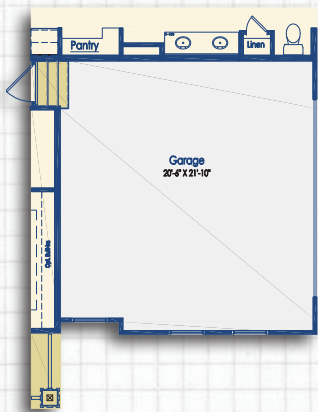
Optional 4' Garage Extension



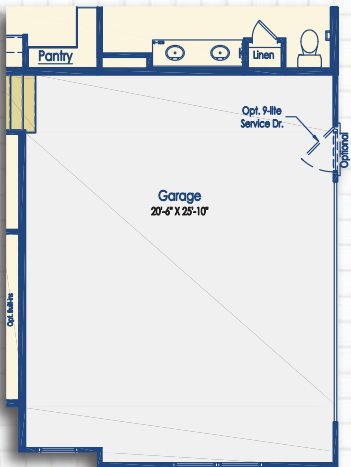
Optional Side Load Garage
Elevation A



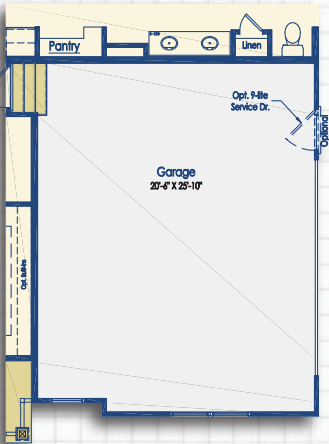
Optional Side Load Garage
Elevation B, C, & D



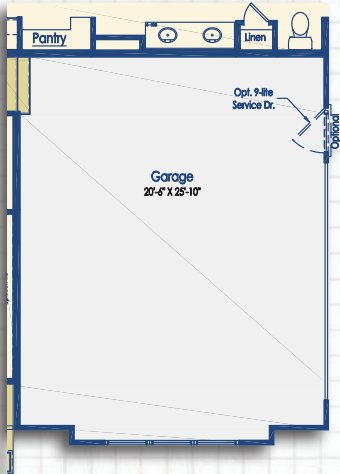
Optional Side Load Garage
Craftsman Elevation



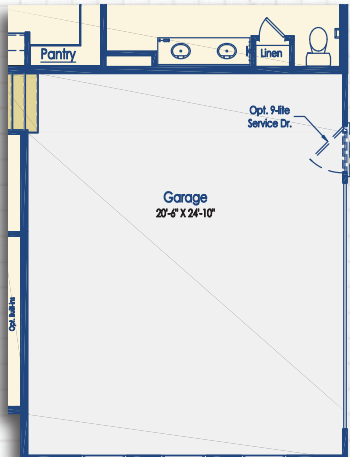
Optional 4' Side Load
Garage Extension
Modern Farmhouse Elevation



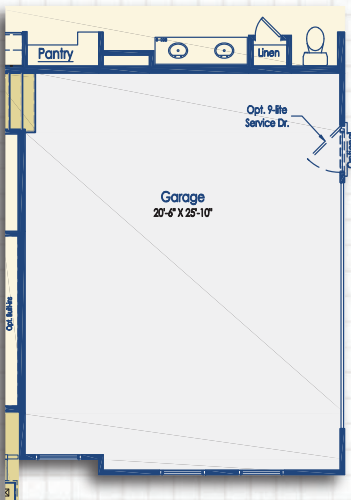
Optional 4' Side Load
Garage Extension
Elevation E



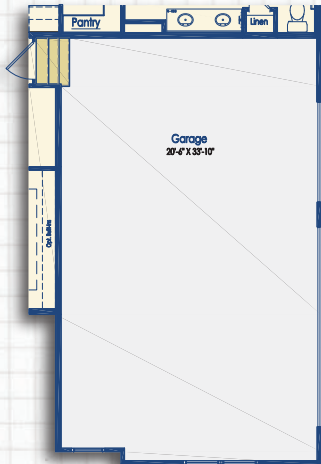
Optional 4ft Side Load Garage
Elevation A



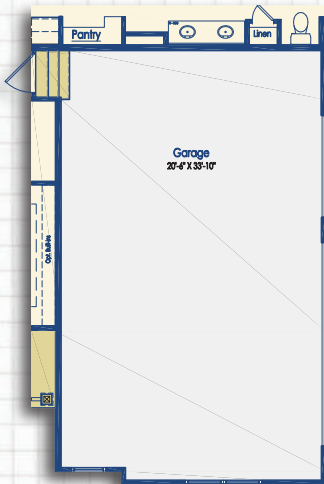
Optional 4ft Side Load Garage
Elevation B, C, & D



Optional 4ft Side Load Garage
Craftsman Elevation



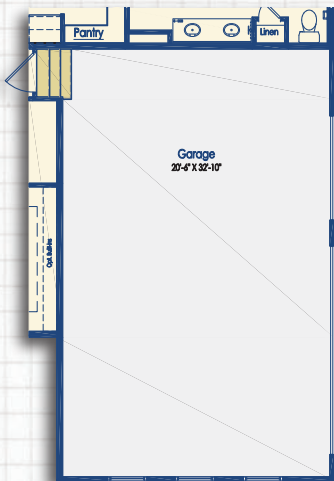
Optional 4ft Side Load Garage
Modern Farmhouse Elevation



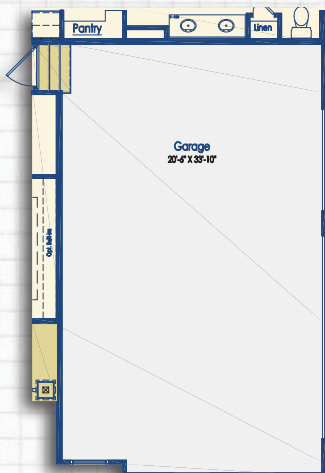
Optional 4ft Side Load Garage
Elevation E



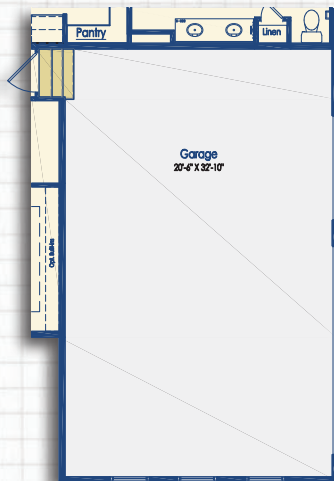
Optional 3 Car Side Load Garage
Elevation A



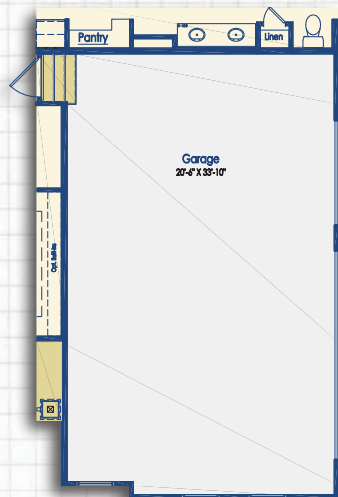
Optional 3 Car Side Load Garage
Elevation B, C, & D



Optional 3 Car Side Load Garage
Craftsman Elevation



Optional 3 Car Side Load Garage
Modern Farmhouse Elevation



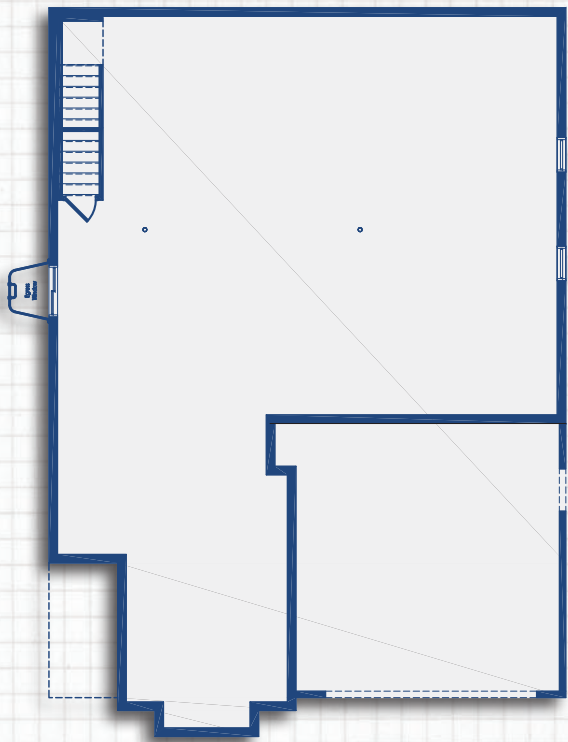
Optional 3 Car Side Load Garage
Elevation E

BASEMENT OPTIONS

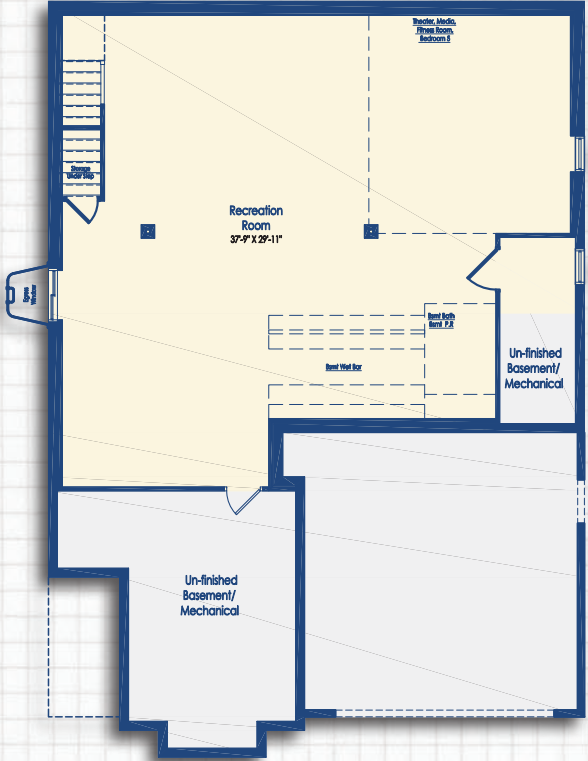
SQUARE FOOTAGE

Unfinished Basement	
Elevation A	1430
Elevation B, C, & D	1414
Finished Basement	
Media Room	+31

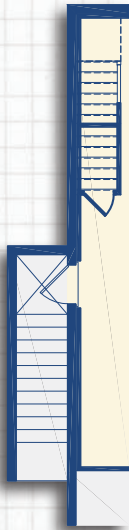
*Floor plan dimensions are approximate.



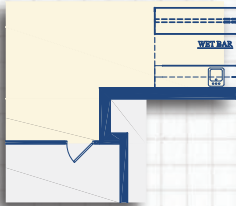
Unfinished Basement



Finished Basement



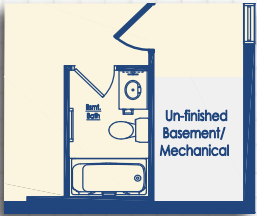
Optional Welled Exit



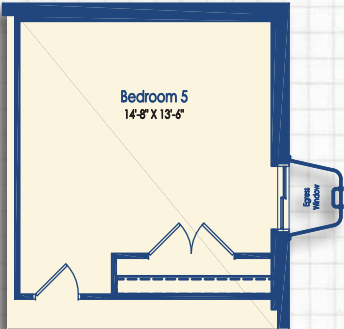
Optional Basement Bar



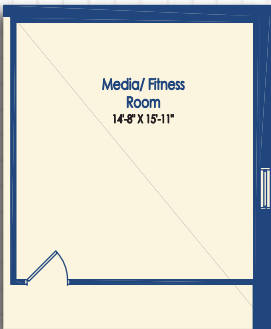
Optional Basement Powder Room



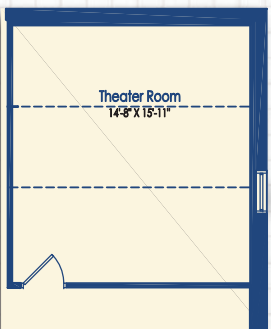
Optional Basement Bath



Optional Bedroom 5



Optional Media Room



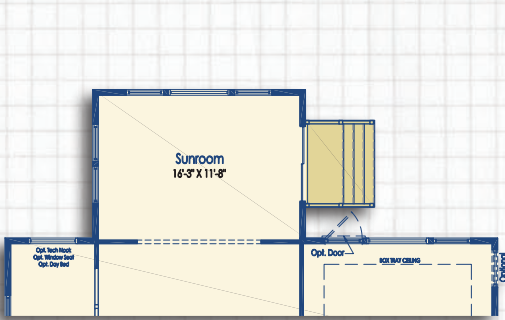
Optional Theater Room

SUNROOM, SCREEN PORCH, AND DECK OPTIONS

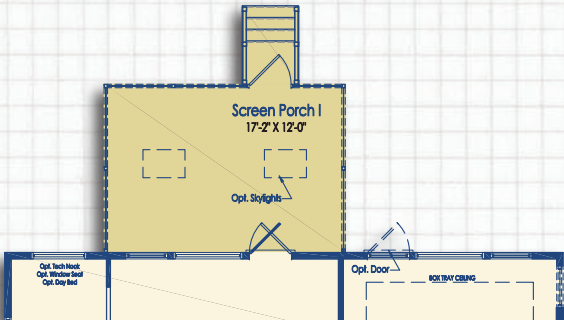
SQUARE FOOTAGE

Sunroom	+209
Screen Porch	+207

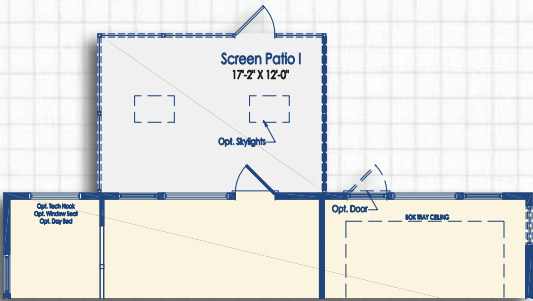
*Floor plan dimensions are approximate



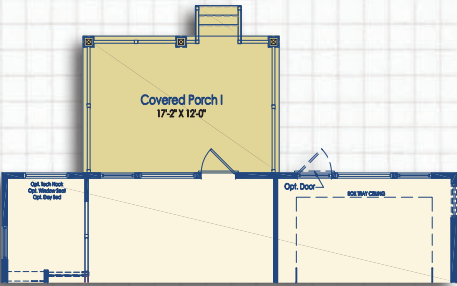
Optional Sunroom



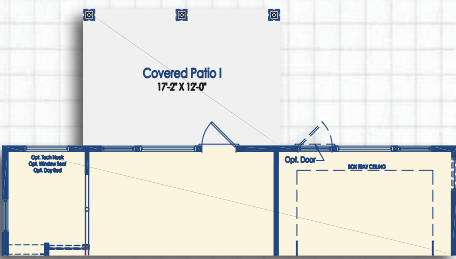
Optional Screen Porch



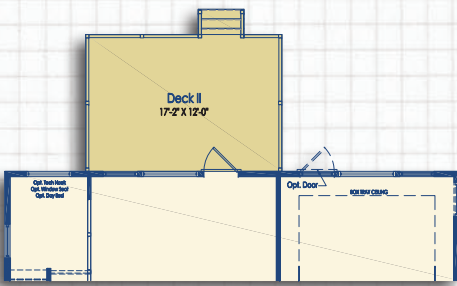
Optional Screen Patio



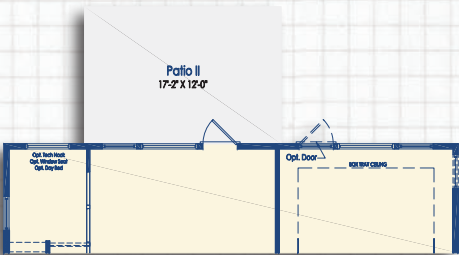
Optional Covered Porch I



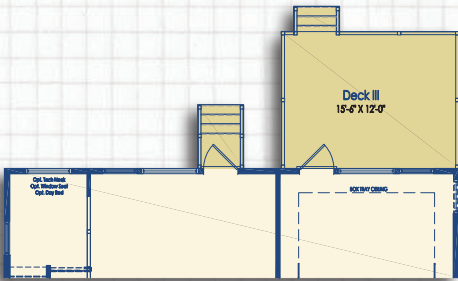
Optional Covered Patio



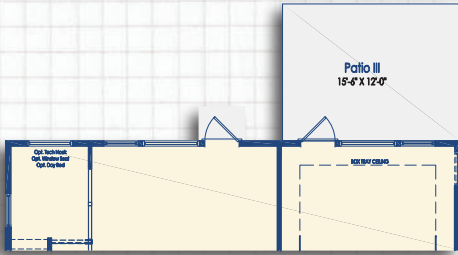
Optional Deck I



Optional Patio I

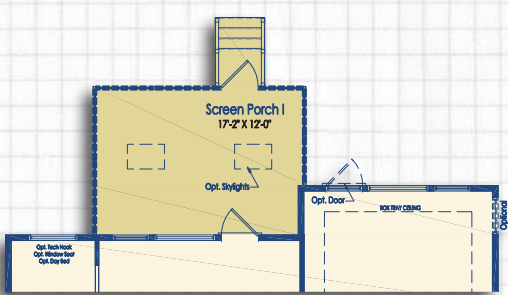


Optional Deck III

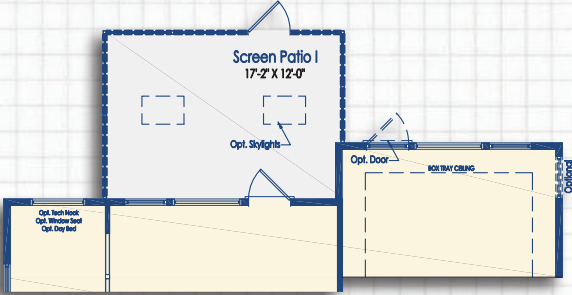


Optional Patio III

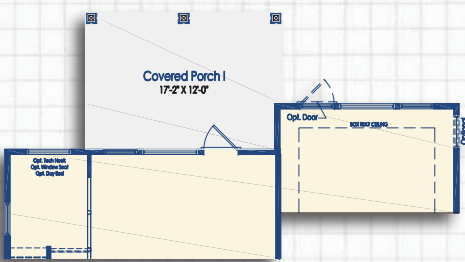
SUNROOM, SCREEN PORCH, AND DECK OPTIONS



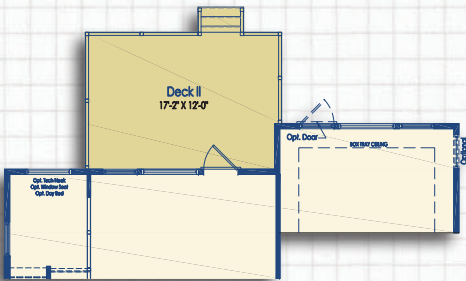
Optional Screen Porch with Optional
Luxury Owner's Suite



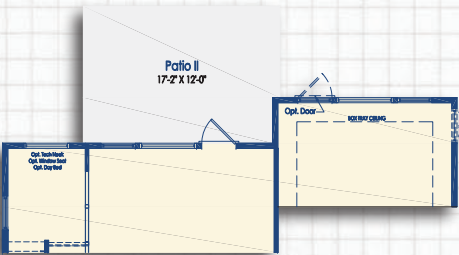
Optional Screen Patio with Optional Luxury
Owner's Suite



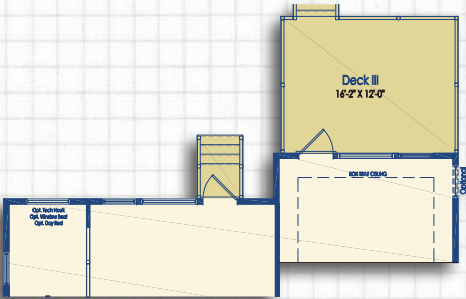
Optional Covered Patio I with Optional
Luxury Owner's Suite



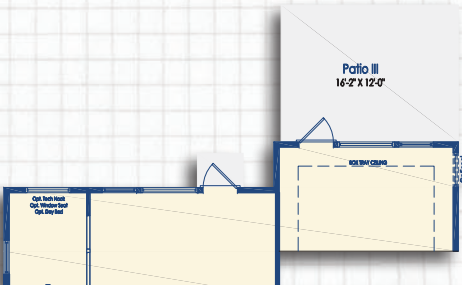
Optional Deck I with Optional Luxury
Owner's Suite



Optional Patio II with Optional Luxury
Owner's Suite

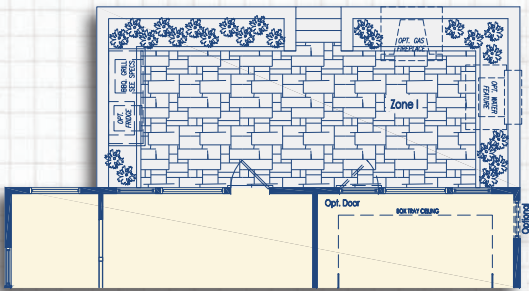


Optional Deck III with Optional Luxury
Owner's Suite

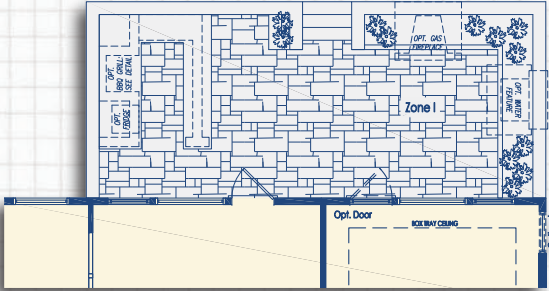


Optional Patio III with Optional Luxury
Owner's Suite

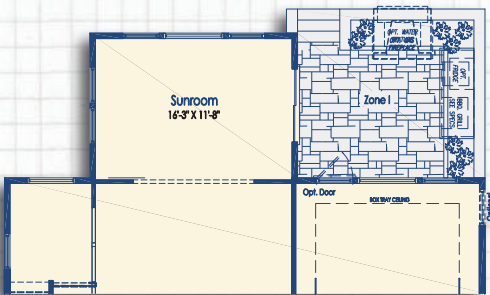
COURTYARD OPTIONS



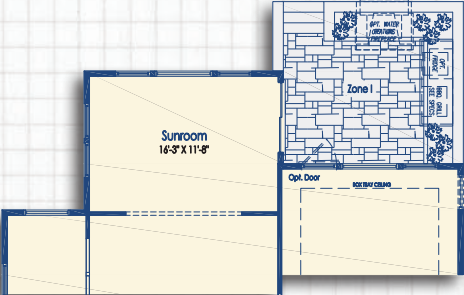
Optional Courtyard



Optional Courtyard with Optional Peninsula Bar



Optional Courtyard with Optional Sunroom



Optional Courtyard with Optional Sunroom and
Luxury Owner's Suite

