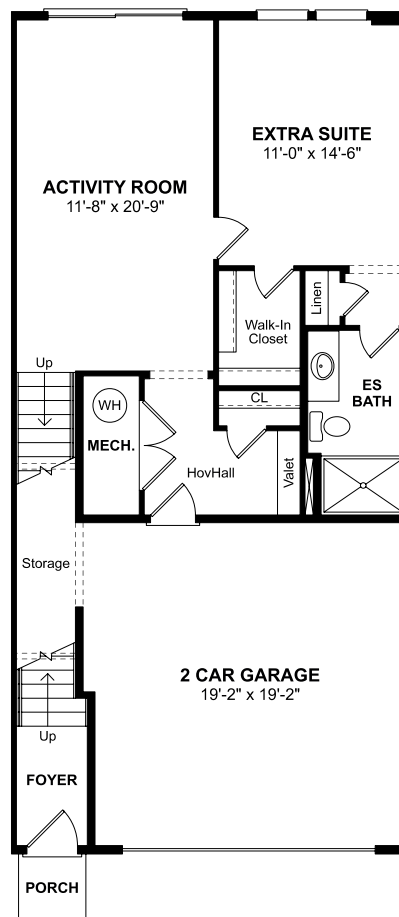


The Bluemont

Floorplan



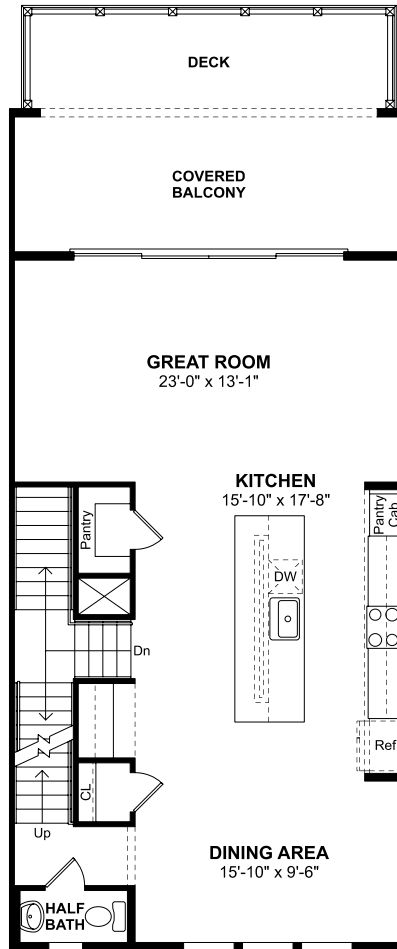
First Floor

PLAN DETAILS

| 4 Bedrooms | 3.5 Baths | 2 Car Garage

The Bluemont

Floorplan



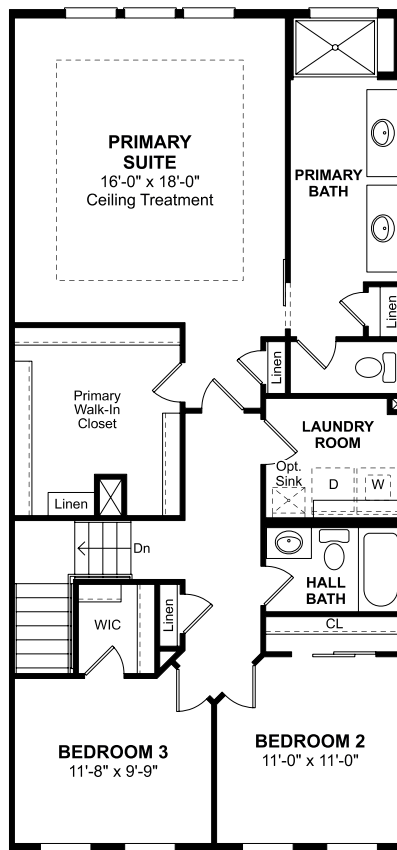
Second Floor

PLAN DETAILS

| 4 Bedrooms | 3.5 Baths | 2 Car Garage

The Bluemont

Floorplan



Third Floor

PLAN DETAILS

| 4 Bedrooms | 3.5 Baths | 2 Car Garage

888-425-1829 | Kings Hwy and Gills Neck Rd Lewes, DE 19958

*Note 1



Mitchell's Corner

Site Plan

Find a home that's right for you



888-425-1829 | Kings Hwy and Gills Neck Rd Lewes, DE 19958

07-23-2025 12:28

This rendering is an illustration only of the general features of the community. Purchaser should inspect detailed subdivision, utility and construction plans on file in the sales office for complete information regarding the physical features of the community.