



Barbados

Cypress Creek Estates: 302-485-0202

3 - 5 Beds | 2 - 3 Full Baths | 1 Half Bath
2,587 - 4,302 Sq. Ft.

Lower Level Selected Options:

Please Select the Opt. Basement in the Options Menu

DRB
HOMES

DRBhomes.com



THIS INTERACTIVE SITE IS DESIGNED TO SHOW THE GENERAL LAYOUT OF SPECIFIC FLOOR PLANS (AND ELEVATIONS THEREOF (COLLECTIVELY, "FLOOR PLANS")). ALL IMAGES (INCLUDING, WITHOUT LIMITATION, FLOOR PLANS AND FURNITURE) ARE ARTIST RENDERINGS PROVIDED FOR ILLUSTRATIVE PURPOSES ONLY AND ARE NOT A PART OF A LEGAL CONTRACT. Floor plans may depict optional features that are not included in base home pricing and are not to be construed as contractual standards. Floor plans and optional features are subject to change without notice; not all optional features may be shown. Floor plans and optional features offered vary by community and model of home. Accordingly, please check with a sales representative for your specific community to confirm whether a particular floor plan is available, and what particular options are standard and what may be otherwise available. All dimensions/square footage are approximate; actual dimensions/square footage may vary. No furniture shown on this interactive site is included in base home pricing or otherwise available for selection as an optional feature, and is provided without any dimensions. Furniture may not be capable of placement within a floor plan or otherwise to the satisfaction of the home buyer. | NORTH CORE Barbados R1



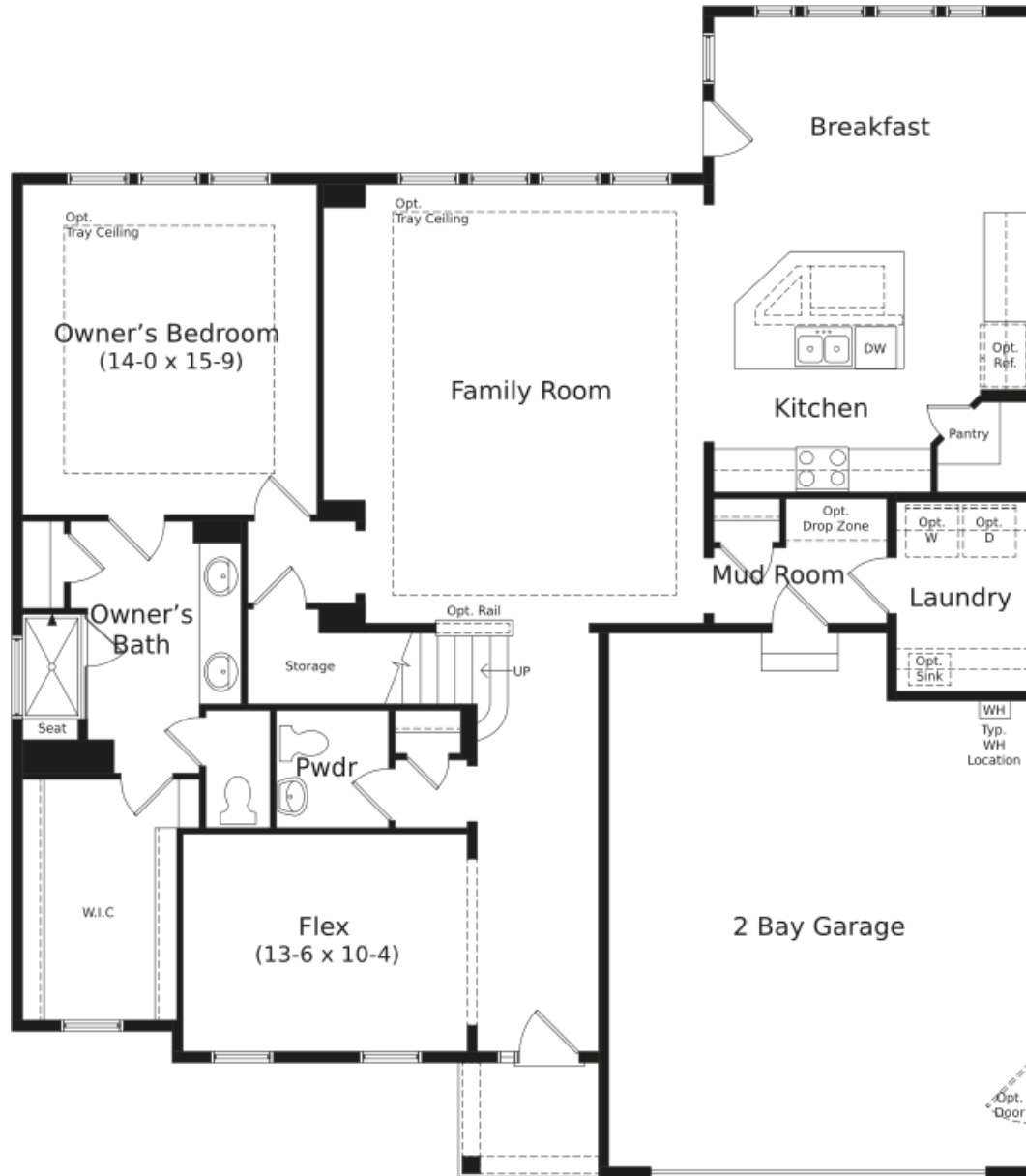
Barbados

Cypress Creek Estates: 302-485-0202

3 - 5 Beds | 2 - 3 Full Baths | 1 Half Bath

2,587 - 4,302 Sq. Ft.

First Floor Selected Options:



DRBhomes.com



THIS INTERACTIVE SITE IS DESIGNED TO SHOW THE GENERAL LAYOUT OF SPECIFIC FLOOR PLANS (AND ELEVATIONS THEREOF (COLLECTIVELY, "FLOOR PLANS")). ALL IMAGES (INCLUDING, WITHOUT LIMITATION, FLOOR PLANS AND FURNITURE) ARE ARTIST RENDERINGS PROVIDED FOR ILLUSTRATIVE PURPOSES ONLY AND ARE NOT A PART OF A LEGAL CONTRACT. Floor plans may depict optional features that are not included in base home pricing and are not to be construed as contractual standards. Floor plans and optional features are subject to change without notice; not all optional features may be shown. Floor plans and optional features offered vary by community and model of home. Accordingly, please check with a sales representative for your specific community to confirm whether a particular floor plan is available, and what particular options are standard and what may be otherwise available. All dimensions/square footage are approximate; actual dimensions/square footage may vary. No furniture shown on this interactive site is included in base home pricing or otherwise available for selection as an optional feature, and is provided without any dimensions. Furniture may not be capable of placement within a floor plan or otherwise to the satisfaction of the home buyer. | NORTH CORE Barbados R1

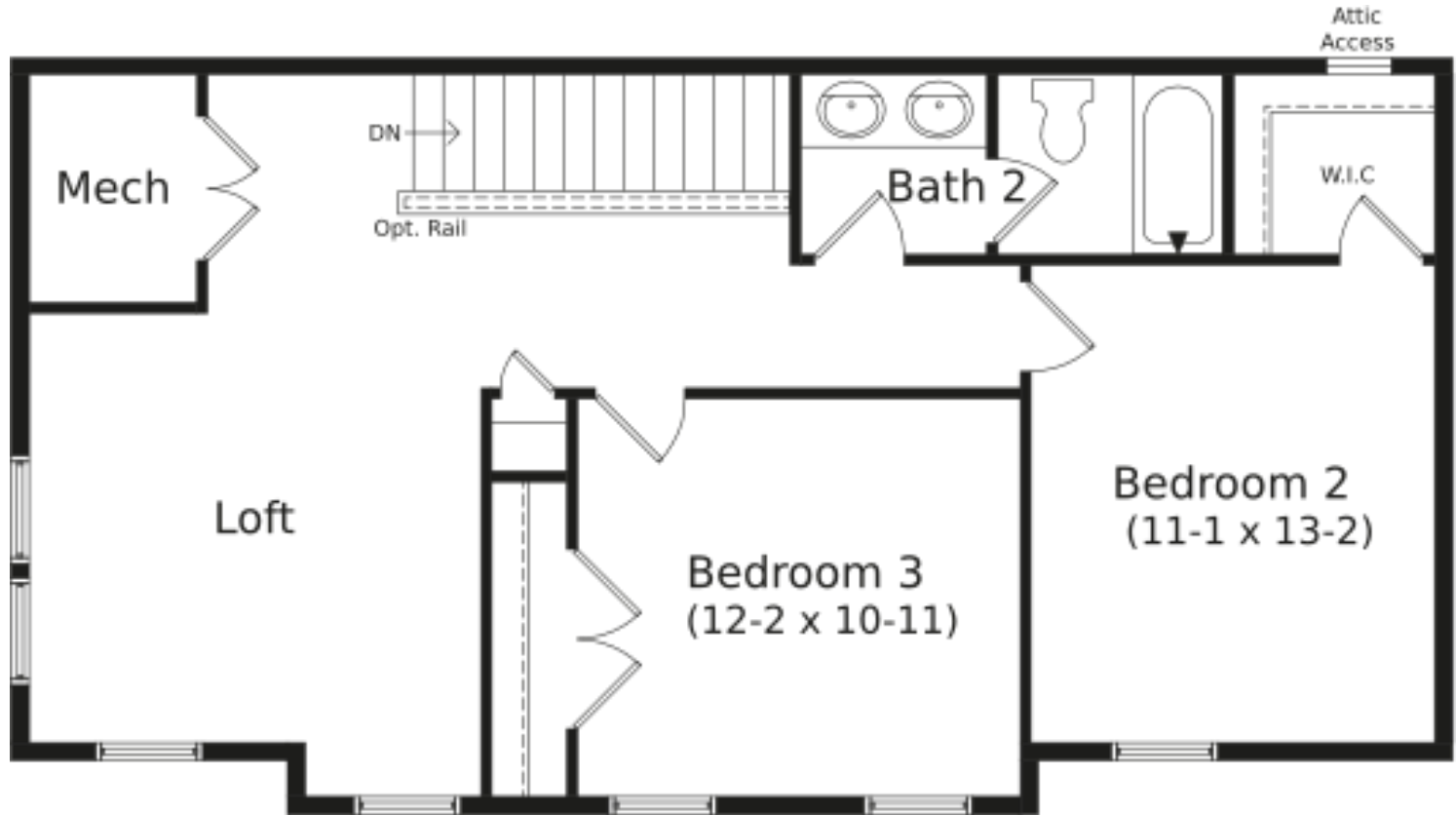


Barbados

Cypress Creek Estates: 302-485-0202

3 - 5 Beds | 2 - 3 Full Baths | 1 Half Bath
2,587 - 4,302 Sq. Ft.

Second Floor Selected Options:



DRB HOMES

DRBhomes.com



THIS INTERACTIVE SITE IS DESIGNED TO SHOW THE GENERAL LAYOUT OF SPECIFIC FLOOR PLANS (AND ELEVATIONS THEREOF (COLLECTIVELY, "FLOOR PLANS")). ALL IMAGES (INCLUDING, WITHOUT LIMITATION, FLOOR PLANS AND FURNITURE) ARE ARTIST RENDERINGS PROVIDED FOR ILLUSTRATIVE PURPOSES ONLY AND ARE NOT A PART OF A LEGAL CONTRACT. Floor plans may depict optional features that are not included in base home pricing and are not to be construed as contractual standards. Floor plans and optional features are subject to change without notice; not all optional features may be shown. Floor plans and optional features offered vary by community and model of home. Accordingly, please check with a sales representative for your specific community to confirm whether a particular floor plan is available, and what particular options are standard and what may be otherwise available. All dimensions/square footage are approximate; actual dimensions/square footage may vary. No furniture shown on this interactive site is included in base home pricing or otherwise available for selection as an optional feature, and is provided without any dimensions. Furniture may not be capable of placement within a floor plan or otherwise to the satisfaction of the home buyer. | NORTH CORE Barbados R1