

Sandpiper-T300

3 Beds / 2.5 Baths
2,101 Sq. Ft.

Elevation Lot1


BEAZER
HOMES
Enjoy the Great Indoors



Elevation Lot1



Elevation Arts & Crafts



Elevation Farmhouse



Elevation Coastal



Floorplans, elevations and options (each, a "Standard") are informational only and expressly not made part of any Purchase and Sale Agreement ("PSA"), nor do they give rise to any contractual relationship between you and Beazer Homes. Standards are intended only to provide a general overview of what may be available. You may purchase an option or upgrade if available, or, in its sole discretion, Beazer may substitute an alternative as provided in the PSA. The PSA will define what is included in your home. If you sign a Standard, it is simply your acknowledgement of receipt of the Standards applicable to this model of home. Beazer reserves the right to make changes without notice or obligation to a Standard. Illustrations and specifications are believed correct at time of publication, and are not intended to create any warranty or contract rights. Each Standard and all plans, specifications, features, materials and appliances are subject to availability, change or substitution deemed advisable by Beazer Homes or as required by local building code or law. Details listed may vary depending on the plan, elevation and options chosen. Please consult your New Home Counselor for details. ©2025 Beazer Homes. 25_07 BH CORP_12

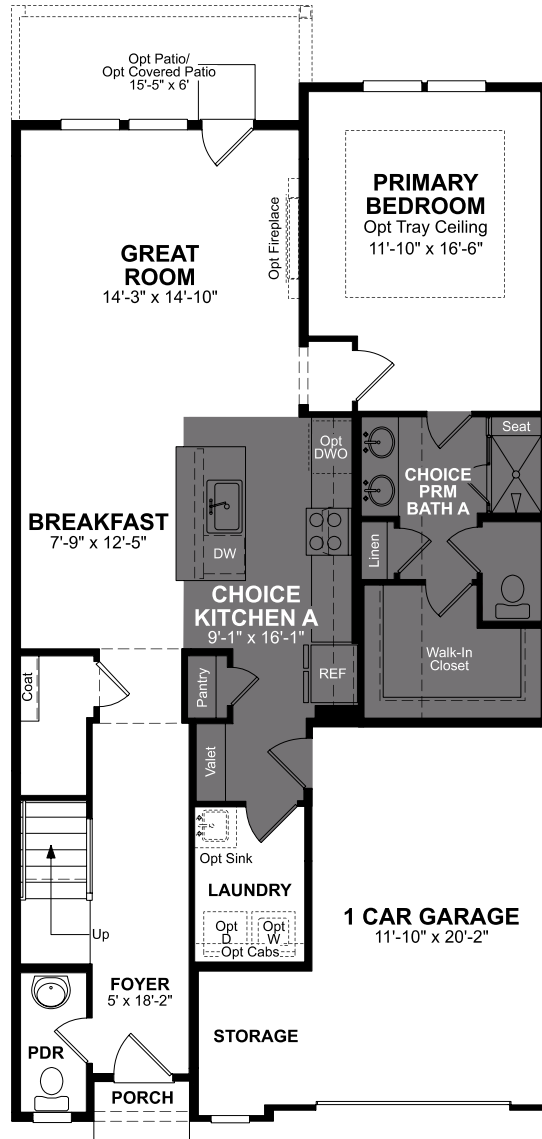
Sandpiper-T300

3 Beds / 2.5 Baths
2,101 Sq. Ft.

Elevation Lot1



First Floor



Legend	
OPT - Optional	
UTIL - Utility	
WIC - Walk In Closet	
WIP - Walk In Pantry	
HVAC - Heating Ventilating and Air Conditioning	
MECH - Mechanical Room	
WO - Wall Oven	
LIN - Linen	
PAN - Pantry	
FAS - Fresh Air System	
Dotted Lines Denote Optional Items	
Dashed Lines Denote Elevated Features	

Choice Plans® - Room Choices at no additional cost

- Choice Kitchen B
- Choice Primary Bathroom A
- Choice Primary Bathroom B
- Choice Kitchen A

Paid Options

- Left End Unit
- Right End Unit
- Morning Room



Floorplans, elevations and options (each, a "Standard") are informational only and expressly not made part of any Purchase and Sale Agreement ("PSA"), nor do they give rise to any contractual relationship between you and Beazer Homes. Standards are intended only to provide a general overview of what may be available. You may purchase an option or upgrade if available, or, in its sole discretion, Beazer may substitute an alternative as provided in the PSA. The PSA will define what is included in your home. If you sign a Standard, it is simply your acknowledgement of receipt of the Standards applicable to this model of home. Beazer reserves the right to make changes without notice or obligation to a Standard. Illustrations and specifications are believed correct at time of publication, and are not intended to create any warranty or contract rights. Each Standard and all plans, specifications, features, materials and appliances are subject to availability, change or substitution deemed advisable by Beazer Homes or as required by local building code or law. Details listed may vary depending on the plan, elevation and options chosen. Please consult your New Home Counselor for details. ©2025 Beazer Homes. 25_07 BH CORP_12

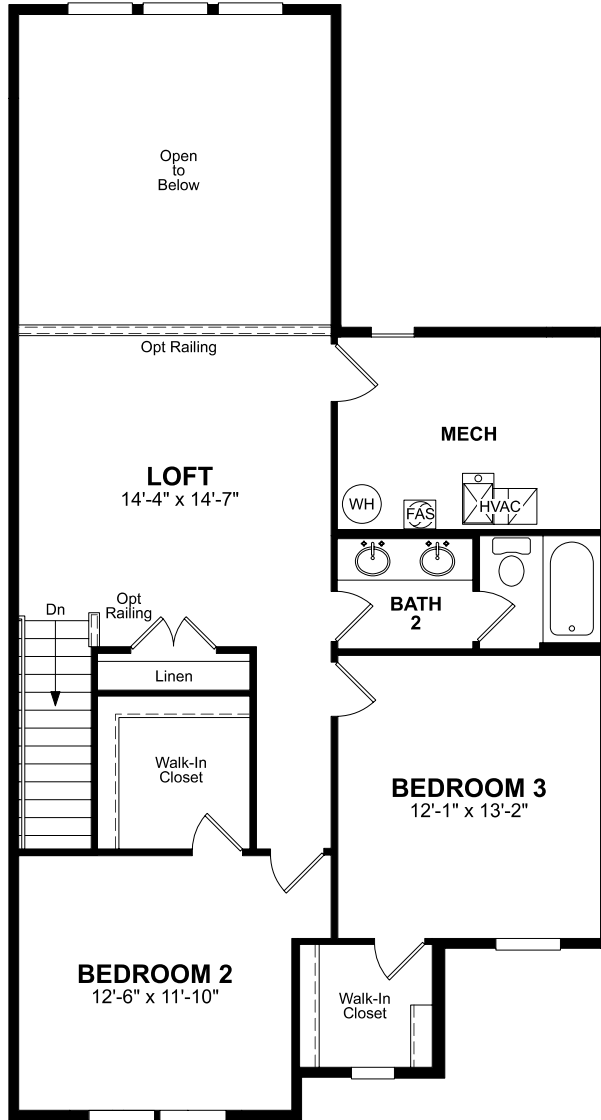
Sandpiper-T300

3 Beds / 2.5 Baths
2,101 Sq. Ft.

Elevation Lot1



Second Floor



Legend	
OPT - Optional	
UTIL - Utility	
WIC - Walk In Closet	
WIP - Walk In Pantry	
HVAC - Heating Ventilating and Air Conditioning	
MECH - Mechanical Room	
WO - Wall Oven	
LIN - Linen	
PAN - Pantry	
FAS - Fresh Air System	
Dotted Lines Denote Optional Items	
Dashed Lines Denote Elevated Features	

Paid Options

Left End Unit

Right End Unit

Bedroom 4/Bath 3



Floorplans, elevations and options (each, a "Standard") are informational only and expressly not made part of any Purchase and Sale Agreement ("PSA"), nor do they give rise to any contractual relationship between you and Beazer Homes. Standards are intended only to provide a general overview of what may be available. You may purchase an option or upgrade if available, or, in its sole discretion, Beazer may substitute an alternative as provided in the PSA. The PSA will define what is included in your home. If you sign a Standard, it is simply your acknowledgement of receipt of the Standards applicable to this model of home. Beazer reserves the right to make changes without notice or obligation to a Standard. Illustrations and specifications are believed correct at time of publication, and are not intended to create any warranty or contract rights. Each Standard and all plans, specifications, features, materials and appliances are subject to availability, change or substitution deemed advisable by Beazer Homes or as required by local building code or law. Details listed may vary depending on the plan, elevation and options chosen. Please consult your New Home Counselor for details. ©2025 Beazer Homes. 25_07 BH CORP_12