

Barlow-V195

4 Beds / 3 Baths
2,483 Sq. Ft.

Elevation Arts & Crafts


BEAZER
HOMES
Enjoy the Great Indoors



Elevation Arts & Crafts



Elevation Coastal



Elevation Shingle



Floorplans, elevations and options (each, a "Standard") are informational only and expressly not made part of any Purchase and Sale Agreement ("PSA"), nor do they give rise to any contractual relationship between you and Beazer Homes. Standards are intended only to provide a general overview of what may be available. You may purchase an option or upgrade if available, or, in its sole discretion, Beazer may substitute an alternative as provided in the PSA. The PSA will define what is included in your home. If you sign a Standard, it is simply your acknowledgement of receipt of the Standards applicable to this model of home. Beazer reserves the right to make changes without notice or obligation to a Standard. Illustrations and specifications are believed correct at time of publication, and are not intended to create any warranty or contract rights. Each Standard and all plans, specifications, features, materials and appliances are subject to availability, change or substitution deemed advisable by Beazer Homes or as required by local building code or law. Details listed may vary depending on the plan, elevation and options chosen. Please consult your New Home Counselor for details. ©2025 Beazer Homes. 25_07 BH CORP_12

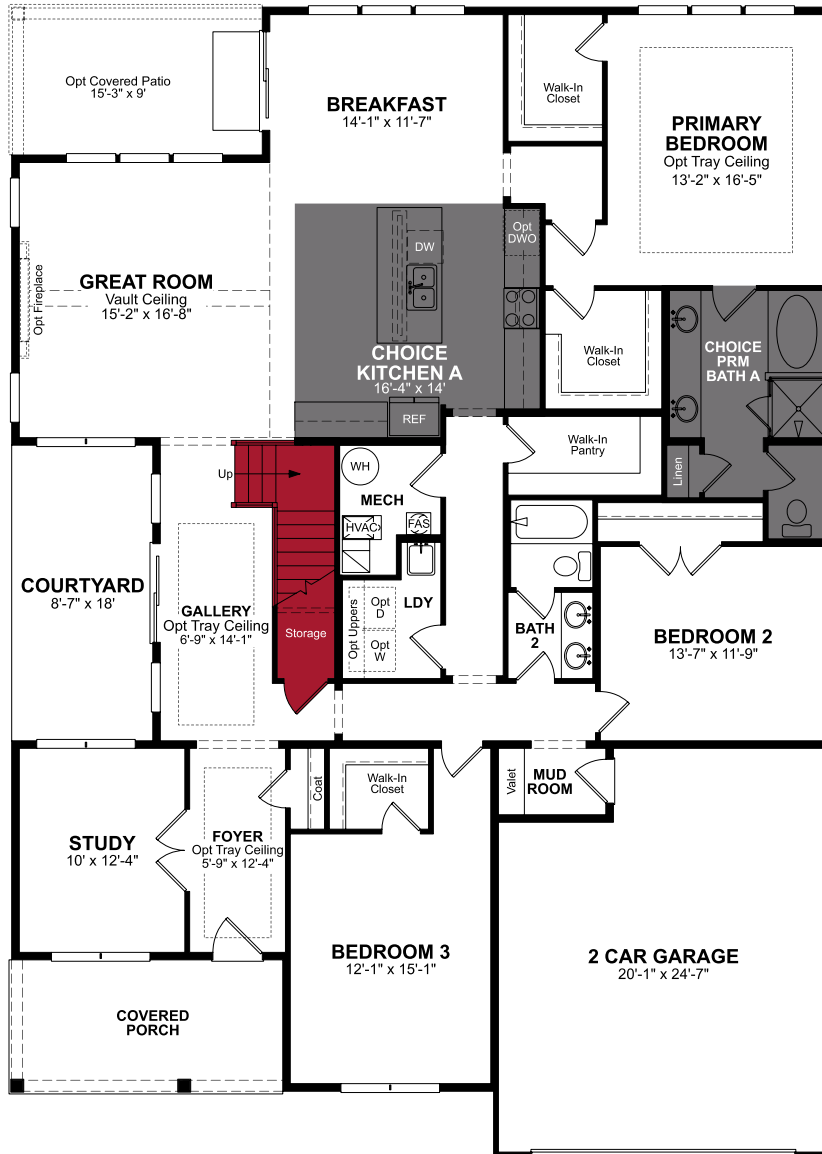
Barlow-V195

4 Beds / 3 Baths
2,483 Sq. Ft.

Elevation Arts & Crafts



First Floor



Legend

- OPT - Optional
- UTIL - Utility
- WIC - Walk In Closet
- WIP - Walk In Pantry
- HVAC - Heating Ventilating and Air Conditioning
- MECH - Mechanical Room
- WO - Wall Oven
- LIN - Linen
- PAN - Pantry
- FAS - Fresh Air System
- Dotted Lines Denote Optional Items
- Dashed Lines Denote Elevated Features

Choice Plans® - Room Choices at no additional cost

- Choice Kitchen A
- Choice Kitchen B
- Choice Primary Bathroom A
- Choice Primary Bathroom B

Paid Options

- Stairs to Second Floor



Floorplans, elevations and options (each, a "Standard") are informational only and expressly not made part of any Purchase and Sale Agreement ("PSA"), nor do they give rise to any contractual relationship between you and Beazer Homes. Standards are intended only to provide a general overview of what may be available. You may purchase an option or upgrade if available, or, in its sole discretion, Beazer may substitute an alternative as provided in the PSA. The PSA will define what is included in your home. If you sign a Standard, it is simply your acknowledgement of receipt of the Standards applicable to this model of home. Beazer reserves the right to make changes without notice or obligation to a Standard. Illustrations and specifications are believed correct at time of publication, and are not intended to create any warranty or contract rights. Each Standard and all plans, specifications, features, materials and appliances are subject to availability, change or substitution deemed advisable by Beazer Homes or as required by local building code or law. Details listed may vary depending on the plan, elevation and options chosen. Please consult your New Home Counselor for details. ©2025 Beazer Homes. 25_07 BH CORP_12

Barlow-V195

4 Beds / 3 Baths
2,483 Sq. Ft.

Elevation Arts & Crafts

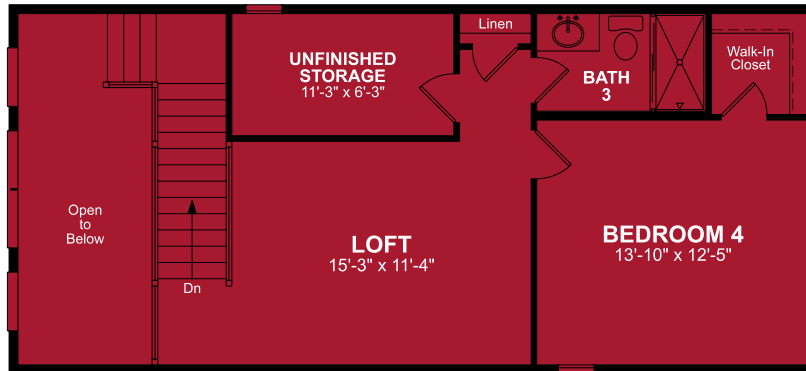


Second Floor

Legend

OPT - Optional
UTIL - Utility
WIC - Walk In Closet
WIP - Walk In Pantry
HVAC - Heating Ventilating
and Air Conditioning
MECH - Mechanical Room
WO - Wall Oven
LIN - Linen
PAN - Pantry
FAS - Fresh Air System
.....
Dotted Lines Denote
Optional Items

Dashed Lines Denote
Elevated Features



Floorplans, elevations and options (each, a "Standard") are informational only and expressly not made part of any Purchase and Sale Agreement ("PSA"), nor do they give rise to any contractual relationship between you and Beazer Homes. Standards are intended only to provide a general overview of what may be available. You may purchase an option or upgrade if available, or, in its sole discretion, Beazer may substitute an alternative as provided in the PSA. The PSA will define what is included in your home. If you sign a Standard, it is simply your acknowledgement of receipt of the Standards applicable to this model of home. Beazer reserves the right to make changes without notice or obligation to a Standard. Illustrations and specifications are believed correct at time of publication, and are not intended to create any warranty or contract rights. Each Standard and all plans, specifications, features, materials and appliances are subject to availability, change or substitution deemed advisable by Beazer Homes or as required by local building code or law. Details listed may vary depending on the plan, elevation and options chosen. Please consult your New Home Counselor for details. ©2025 Beazer Homes. 25_07 BH CORP_12