



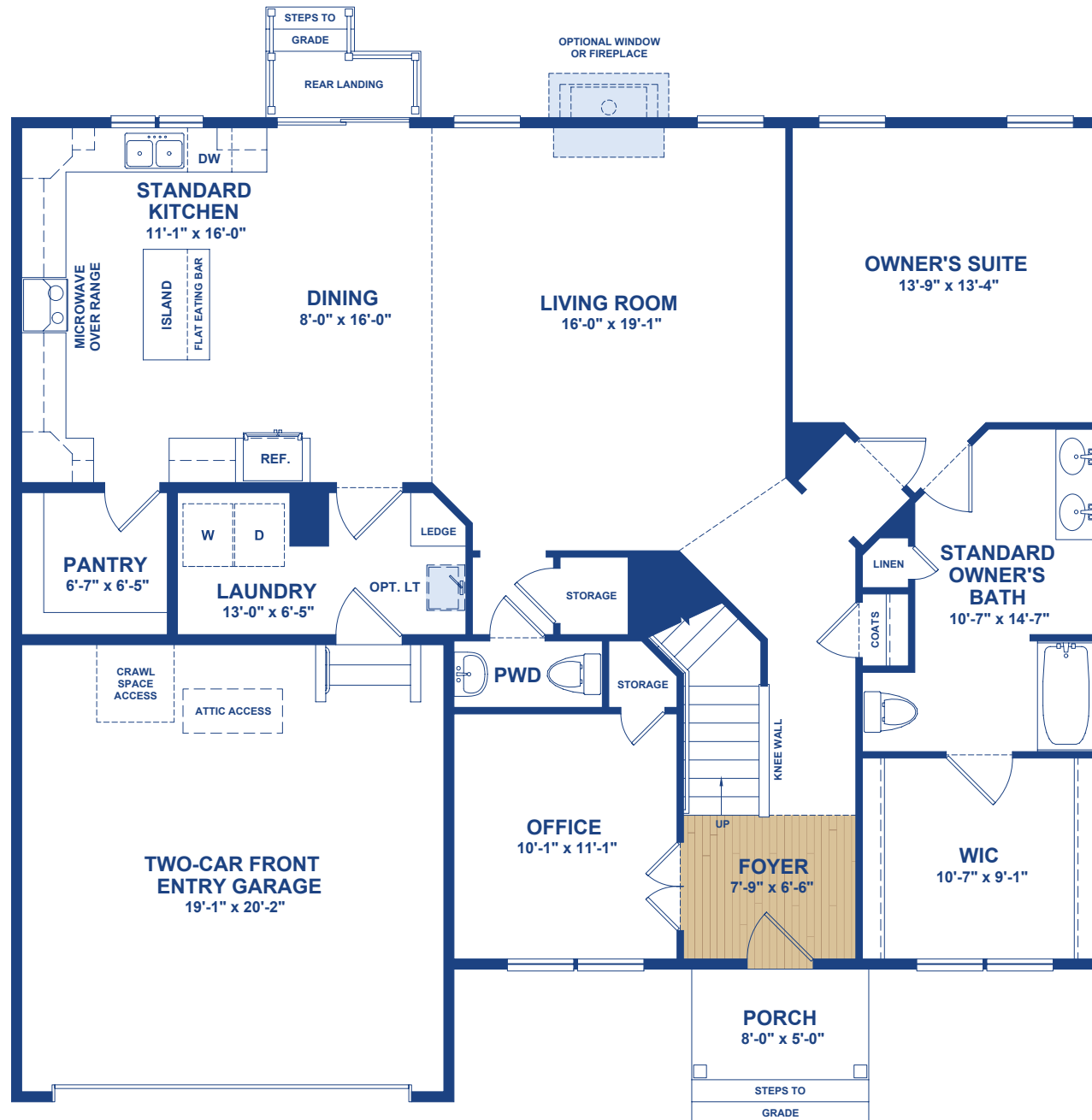
The Reston Heritage Elevation
(Shown with options)

2,663 – 3,067 Sq. Ft. | 3 - 6 BR | 2.5 - 3.5 BA | 2 Story

THE RESTON

FIRST FLOOR PLAN

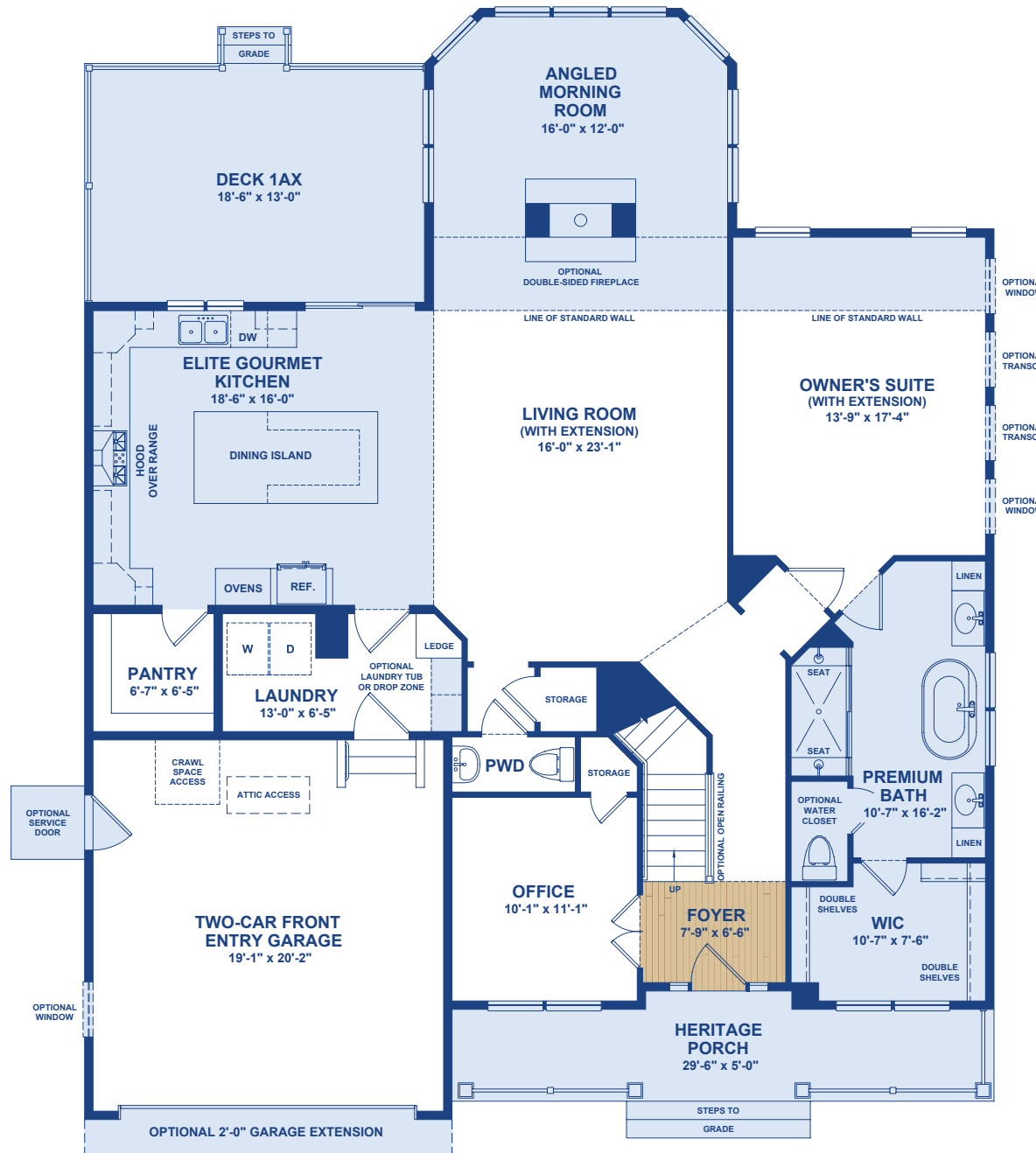
 = Optional Feature



All dimensions are approximate. Floor plans are artist's conception and may vary slightly from precise and most current blue prints and specifications. Plans and elevations may show options not included in the base price. Details subject to change without notice.

Standard First Floor Plan
(Traditional Elevation Shown)

= Optional Feature



Popular Options Shown:

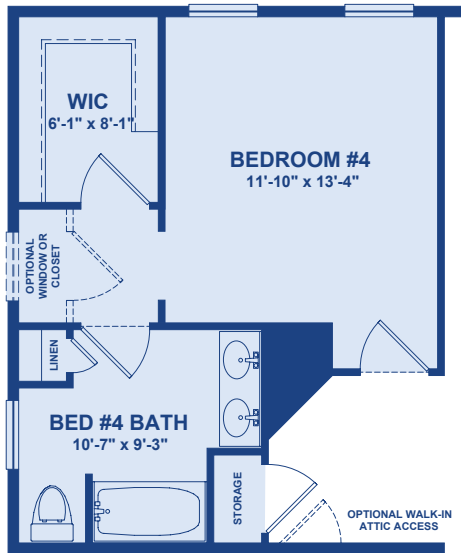
- Heritage Elevation Porch 09910
- 4' Rear Living Room and Owners' Suite Extension 00465
- Deck 1AX - Deck for Angled Morning Room with Living Room Extension 02004
- Angled Morning Room 00727
- Elite Gourmet Kitchen with Oversized Dining Island 00401 + 00431
- Double-Sided Fireplace 00272
- Garage Service Door 00160
- Premium Owner's Bath with Water Closet 00942 + 00980
- 2' Garage Extension 00350

First Floor Plan With Popular **Options** (Heritage Elevation Shown)

THE RESTON

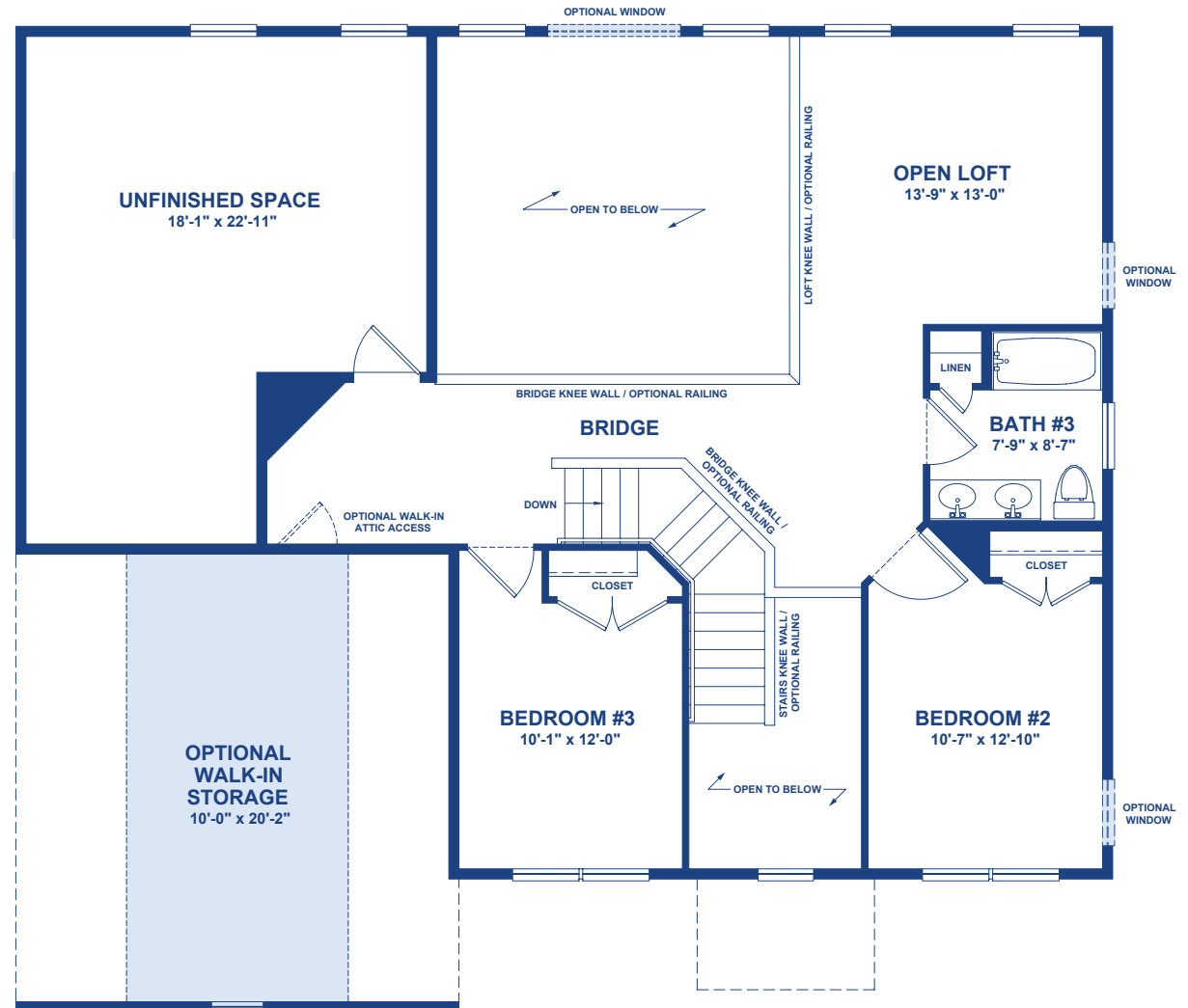
SECOND FLOOR PLAN

 = Optional Feature



**Optional Bedroom #4 with Bath
in lieu of Unfinished Space**
00037

Optional Bedroom #4 Closet
00787

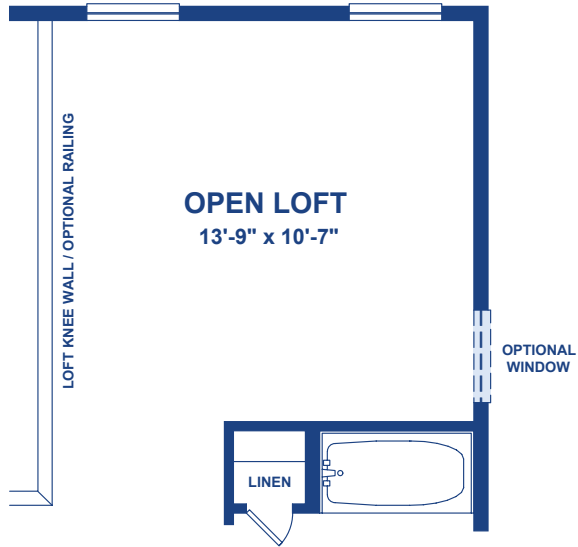


**Standard Second Floor Plan
(Traditional Elevation Shown)
with **Optional** Walk-in Storage**
00896

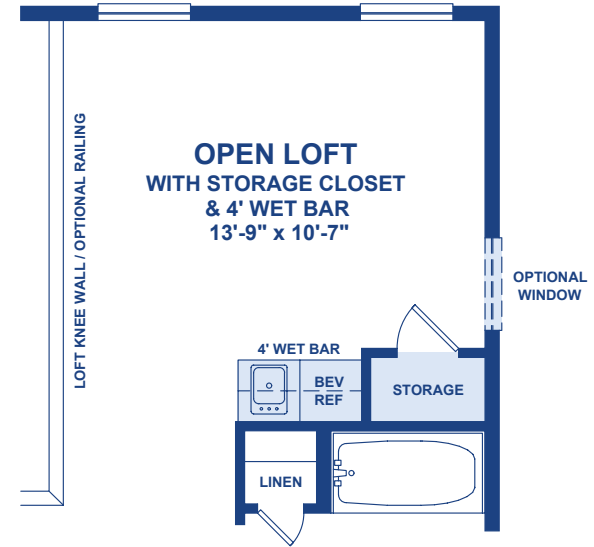
THE RESTON

SECOND FLOOR LOFT OPTIONS

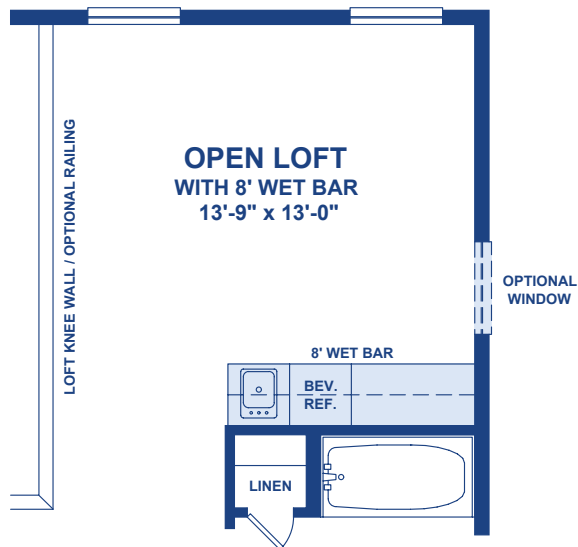
 = Optional Feature



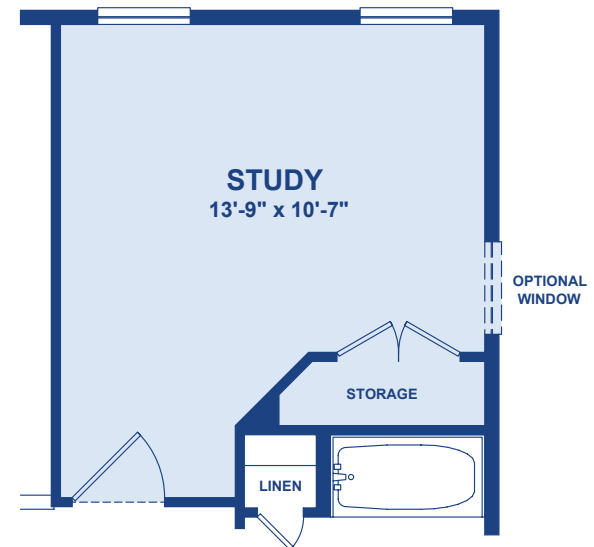
Standard Open Loft



Optional Storage Closet and 4' Wet Bar
00883

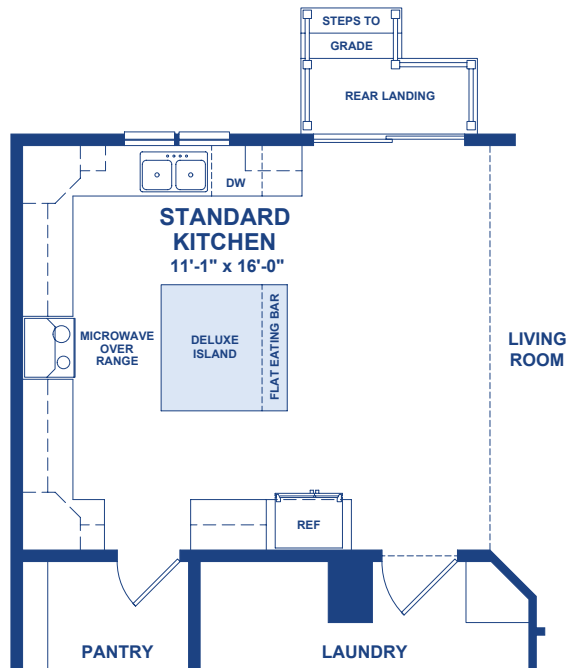


Optional 8' Wet Bar
00007



Optional Study with Storage Closet
in lieu of Open Loft
00927

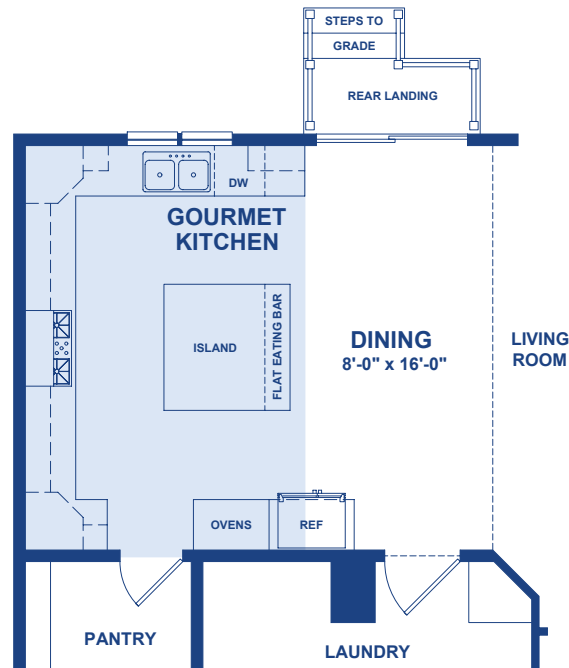
 = Optional Feature



Standard Kitchen

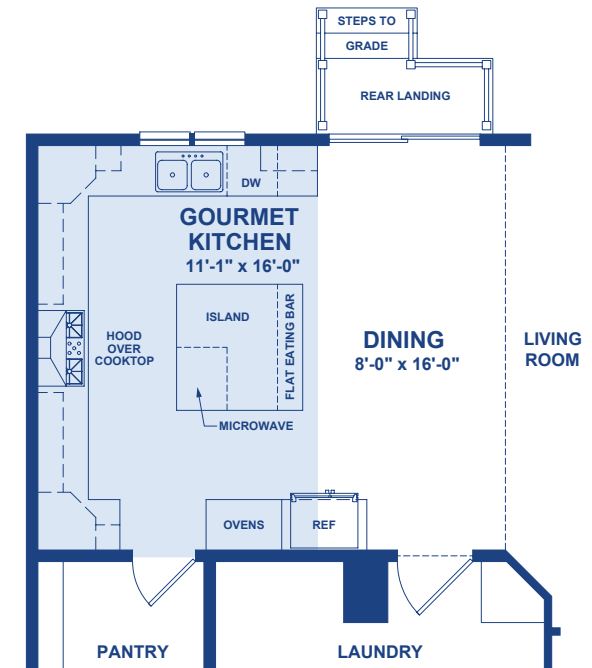
The **Standard** Kitchen includes a standard appliance package with a microwave above a 30" smooth-top electric range and a standard island.

(Shown with) **Optional** Deluxe Island
00469



Optional Gourmet Kitchen 00400

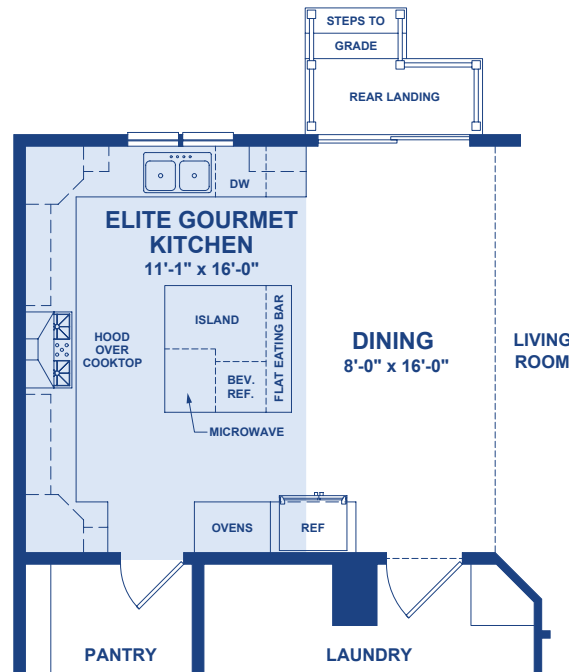
The **Optional** Gourmet Kitchen replaces the 30" range with a 36" electric cooktop with microwave above, adds 30" double wall ovens, and includes the Deluxe Island.



Optional Gourmet Kitchen with Hood Above Cooktop 00403

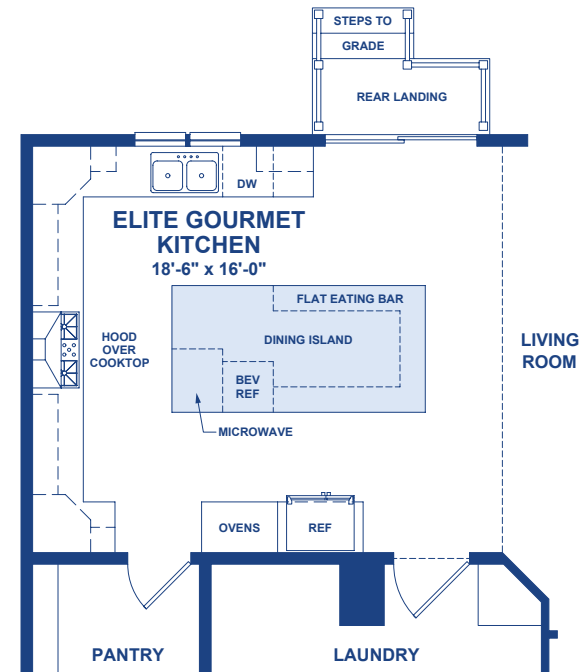
The **Optional** Gourmet Kitchen replaces the 30" range with a 36" electric cooktop, 36" chimney hood, 30" double wall ovens, and the Deluxe Island with built-in microwave.

 = Optional Feature



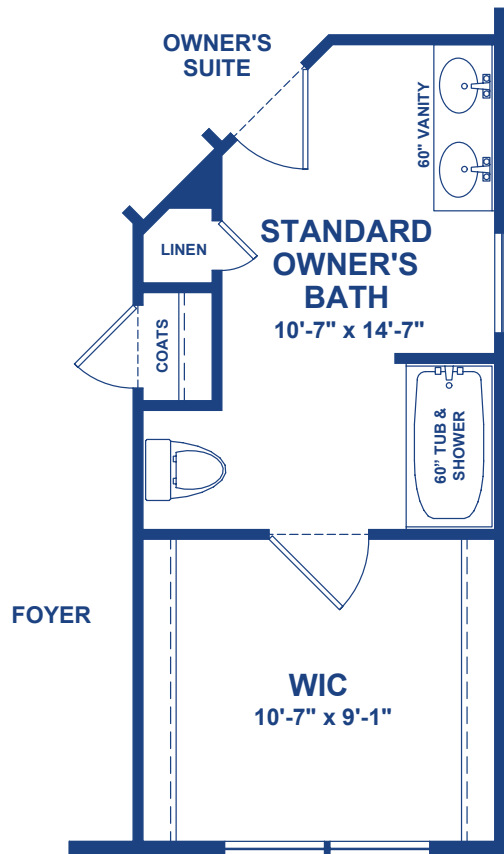
Optional Elite Gourmet Kitchen
00401

The **Optional** Elite Gourmet Kitchen replaces the 30" range with a 36" electric cooktop, 30" double wall ovens, a chimney style range hood, stained or painted cabinets, 42" upper cabinets, cabinetry hardware, select glass cabinet doors, decorative cabinetry end panels, and the Deluxe Island with built-in microwave and beverage fridge.



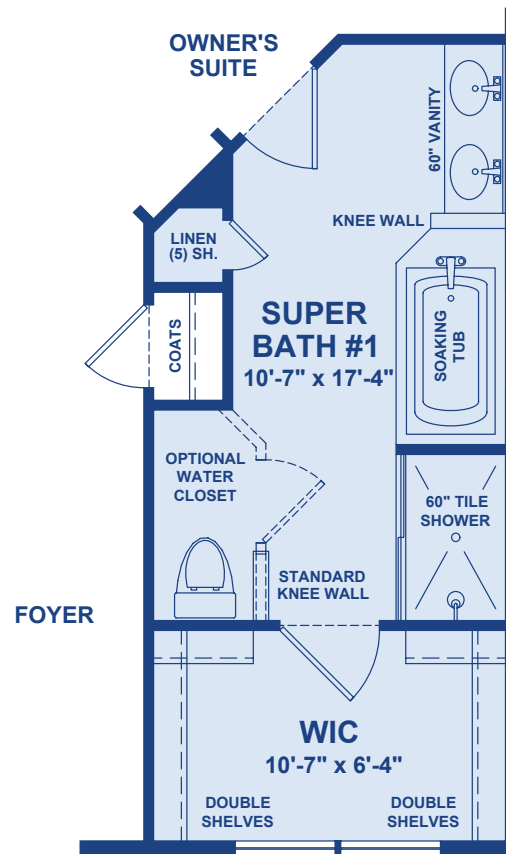
Optional Oversized Dining Island
(available only with Elite Gourmet Kitchen)
00431

 = Optional Feature



Standard Owner's Bath

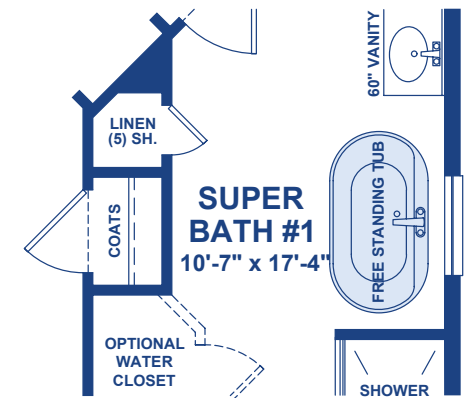
The **Standard** Owner's Bath includes a 60" vanity with cultured marble vanity top, dual sinks, and a fiberglass tub/shower combination



Optional Owner's Super Bath 1 with Soaking Tub

00935

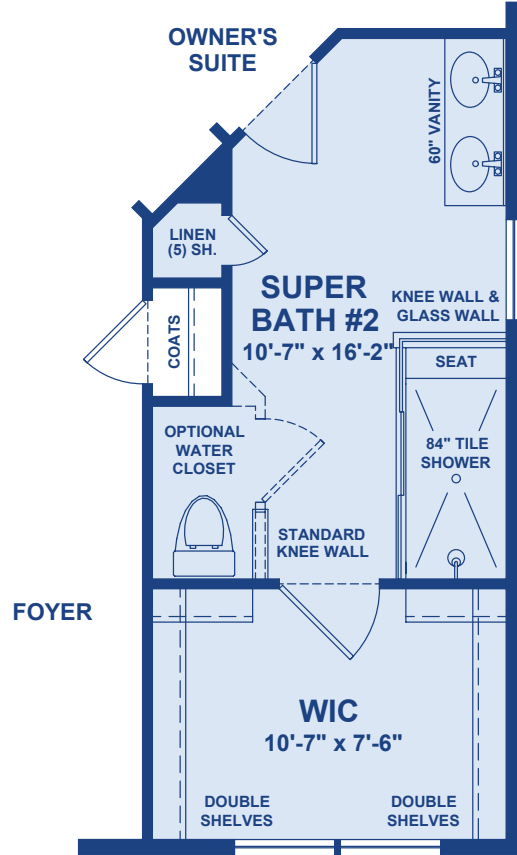
The **Optional** Owner's Super Bath 1 replaces the standard tub/shower combination with a 5-foot shower tiled to 7' high, includes a bypass shower door and a soaking tub with tiled deck.



Optional Free-Standing Tub (available only with Owner's Super Bath 1 45145

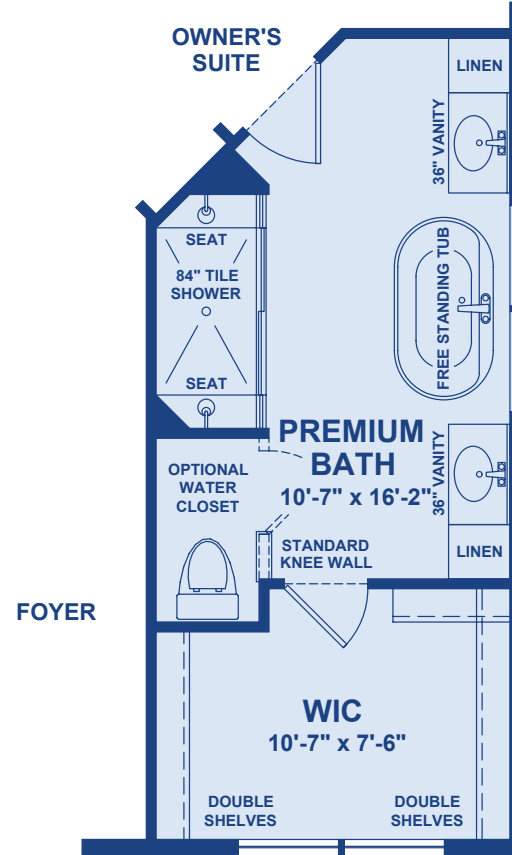
The Super Bath 1 soaking tub with tiled deck may be upgraded to a free-standing tub.

 = Optional Feature



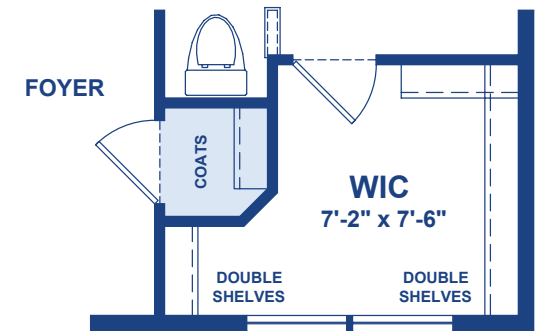
Optional Owner's Super Bath 2
00955

The **Optional** Owner's Super Bath 2 replaces the standard tub/shower combination with a 7-foot shower with bench, tiled to-ceiling, mosaic tiled shower floor, semi-frameless glass shower door, and a damp location recessed light over the shower.



Optional Premium Owner's Bath
00942

The **Optional** Premium Owner's Bath replaces the standard tub/shower combination with a 7-foot shower tiled-to-ceiling, two tiled benches, two shower heads, mosaic tiled shower floor, frameless glass shower door, recessed light over the shower, two 36" vanities with linen storage with glass accents and a free-standing tub.

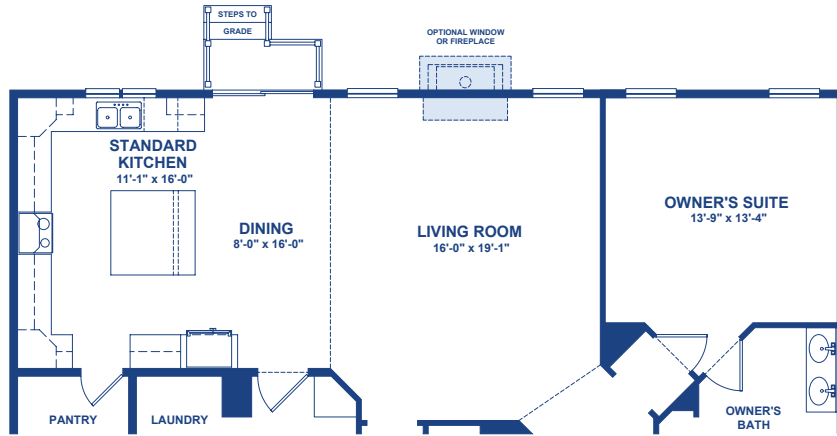


Optional Foyer Coat Closet
(available only with Premium Owner's Bath)
00782

THE RESTON

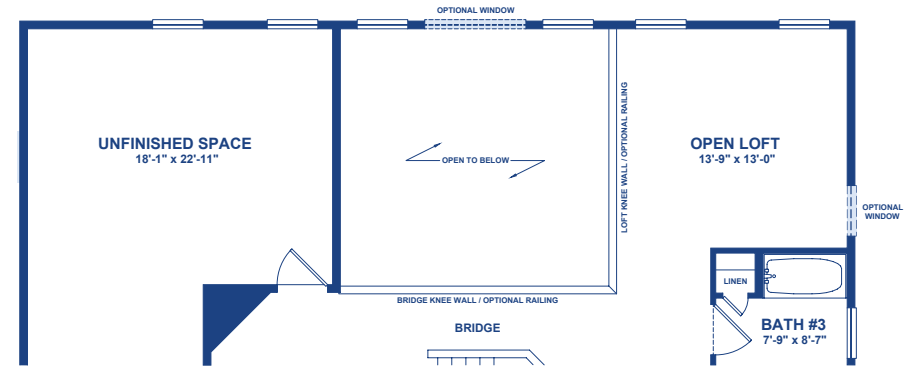
EXTENSION OPTIONS

 = Optional Feature

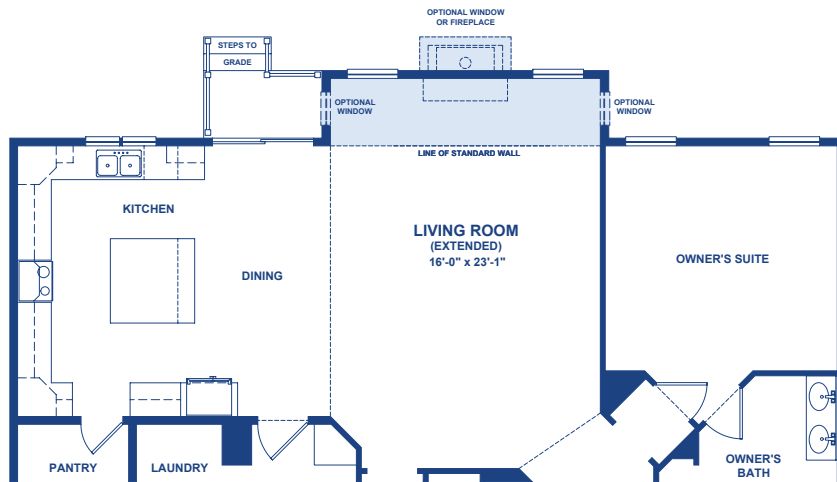


First Floor

Standard First Floor & Second Floors



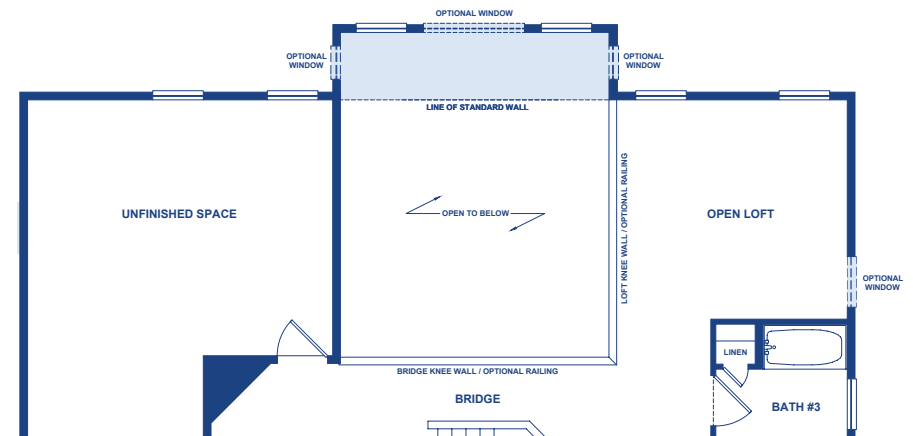
Second Floor



First Floor

Optional 4' Living Room Extension

00445

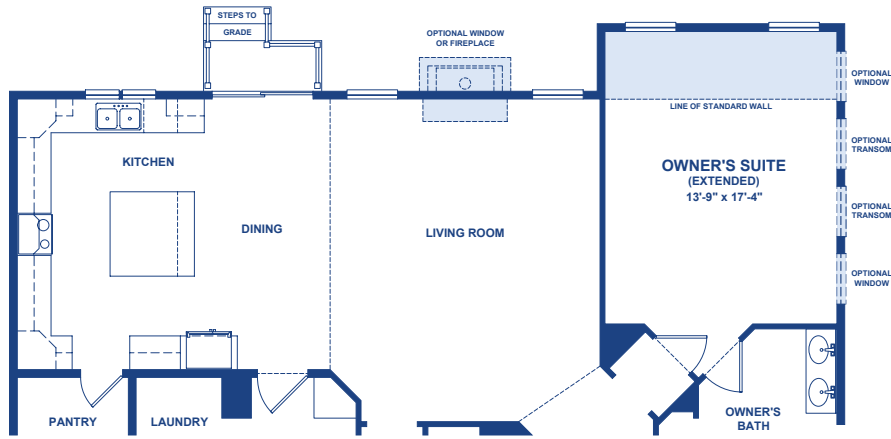


Second Floor

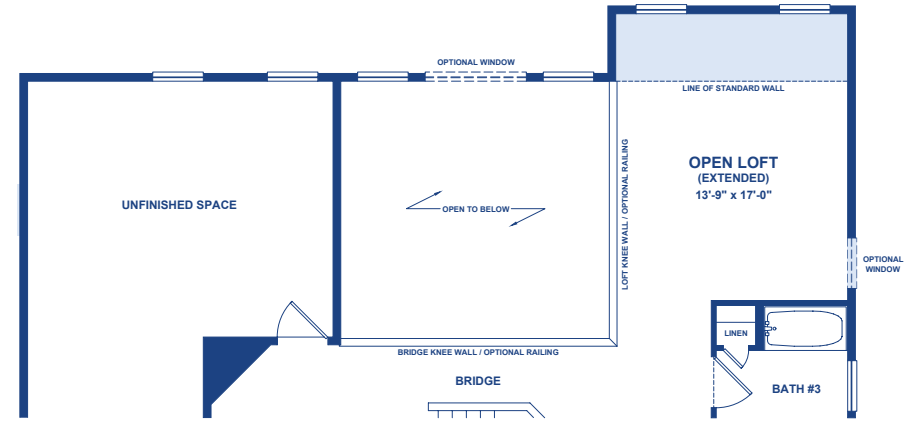
THE RESTON

EXTENSION OPTIONS

 = Optional Feature

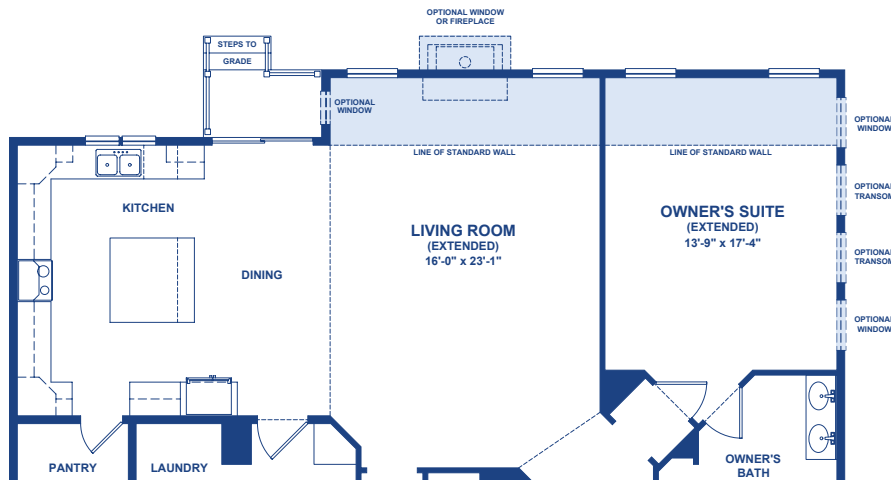


First Floor

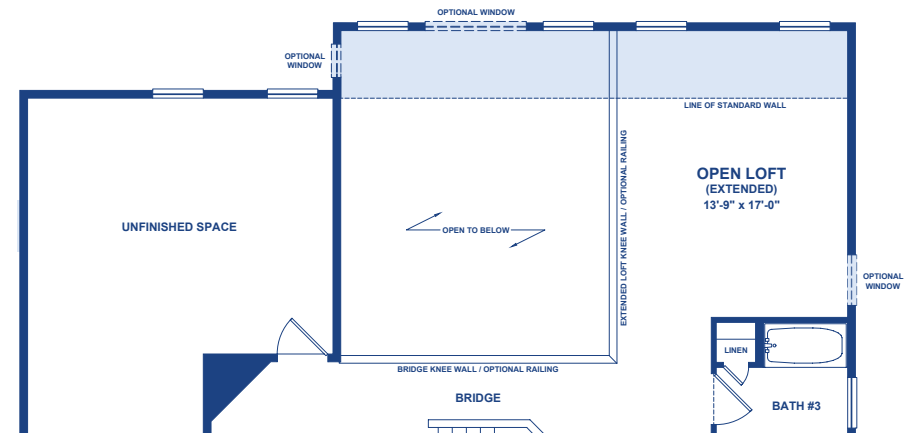


Second Floor

Optional Owner's Suite Extension (with Open Loft Extension)
00066



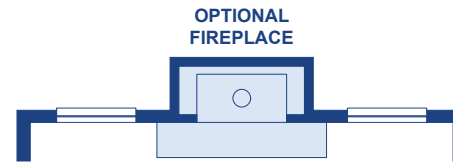
First Floor



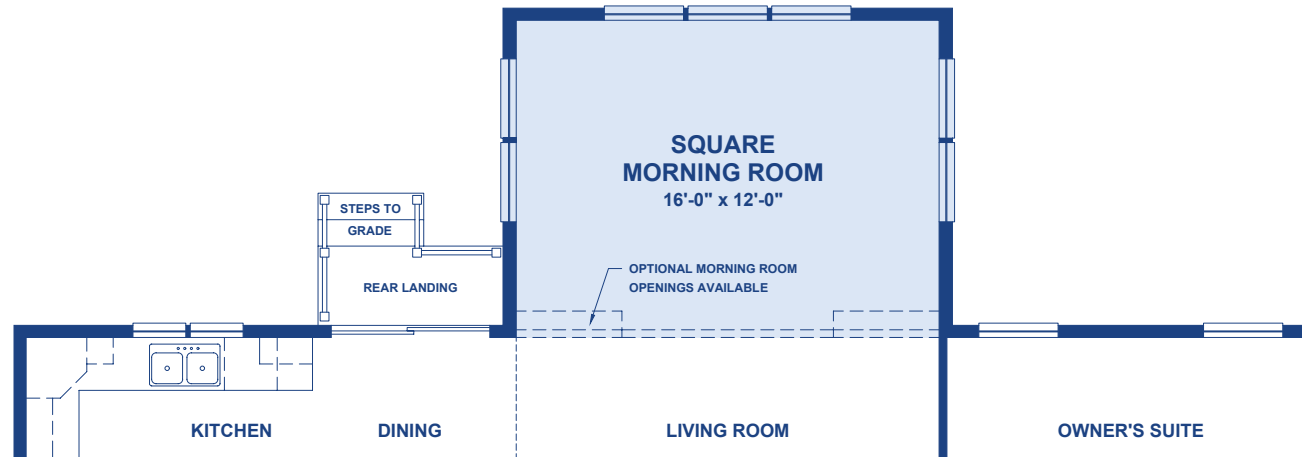
Second Floor

Optional Living Room/Owner's Suite Extension (with Open Loft Extension)
00465

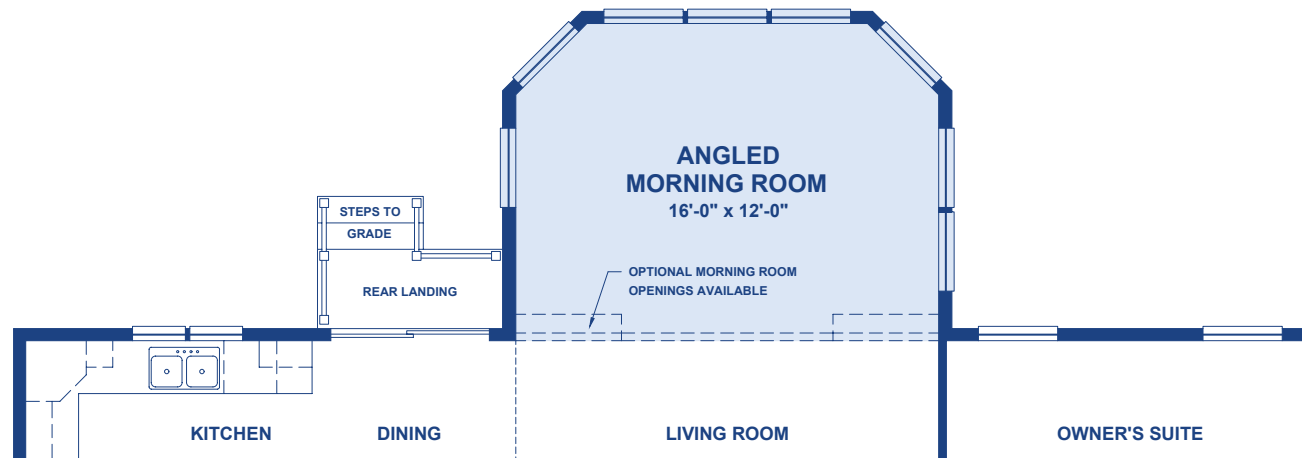
 = **Optional Feature**



Optional Fireplace
 (available only with Square Morning Room)
 00283, 00285



Optional Square Morning Room
 00726

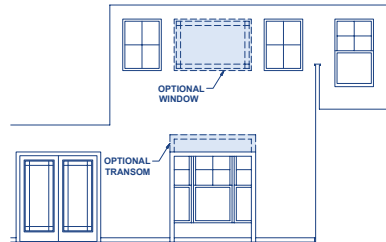


Optional Angled Morning Room
 00727

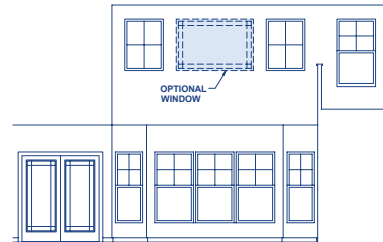
THE RESTON

MORNING ROOM OPENING OPTIONS

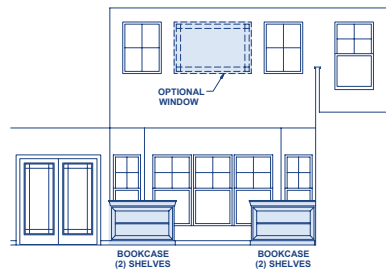
Optional Angled Morning Room Openings (View from Living Room)



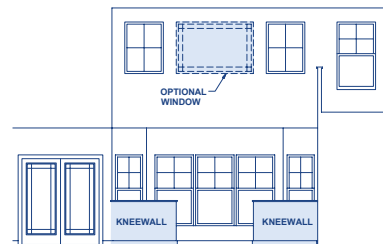
Standard Full Opening



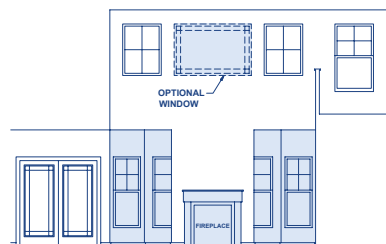
Optional Cased Opening
50118, 50119



Optional Knee Walls
50117

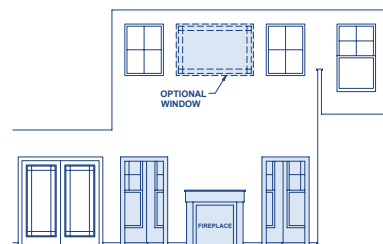


Optional Book Shelves
50125



Optional Double-Sided Fireplace
00273

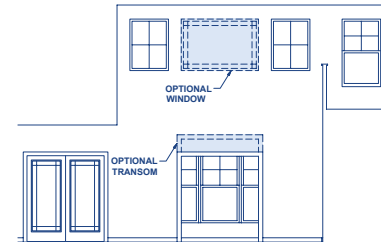
Optional Linear Fireplace 00272



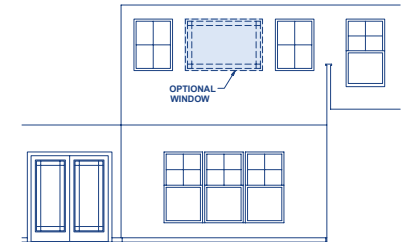
Optional Cased Openings with Double-Sided Fireplace
50114 + 00273

Optional Linear Fireplace 00272

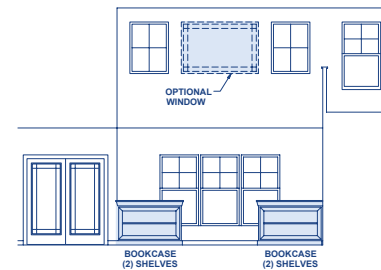
Optional Square Morning Room Openings (View from Living Room)



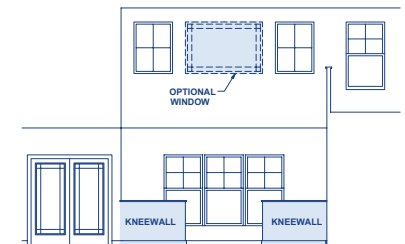
Standard Full Opening



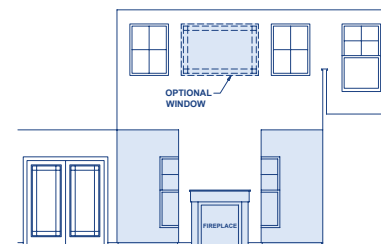
Optional Cased Opening
50118, 50119



Optional Knee Walls
50117

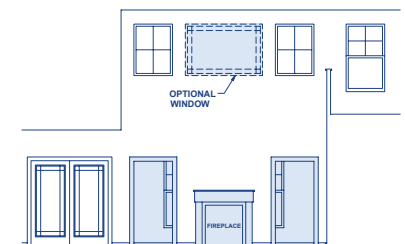


Optional Book Shelves
50125



Optional Double-Sided Fireplace
00273

Optional Linear Fireplace 00272



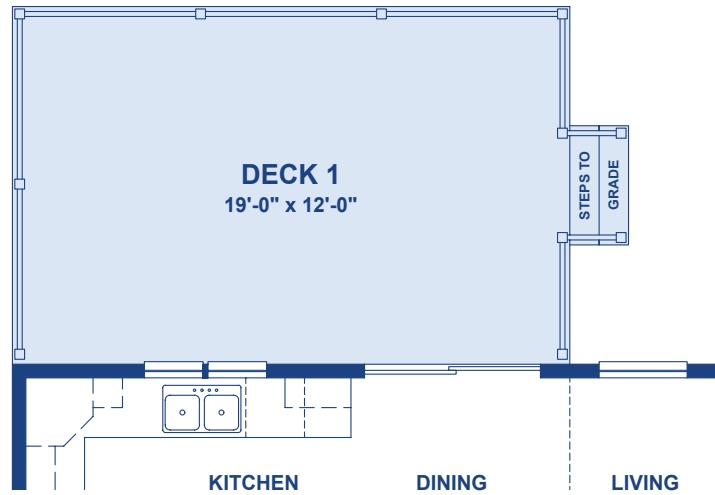
Optional Cased Openings with Double-Sided Fireplace
50114 + 00273

Optional Linear Fireplace 00272

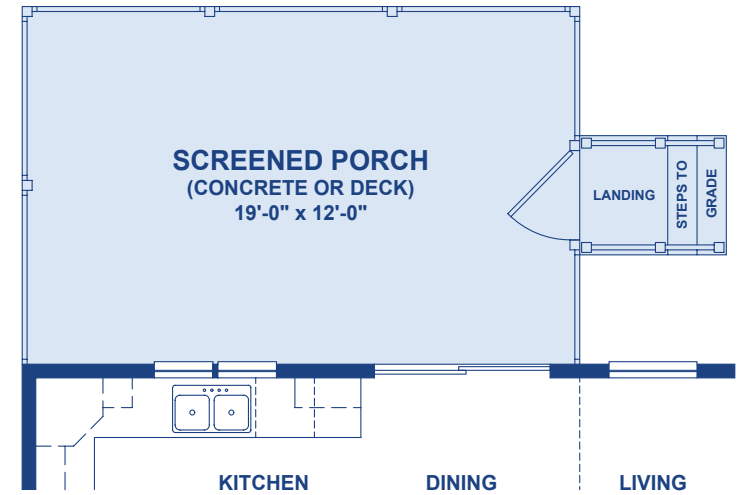
THE RESTON

DECK AND SCREENED PORCH OPTIONS

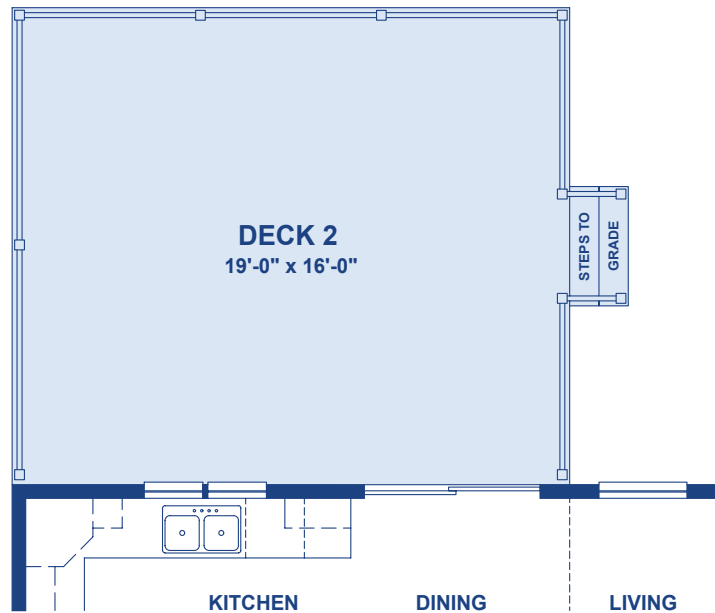
 = Optional Feature



Optional Deck 1
02000



Optional Screened Porch
00820, 00821

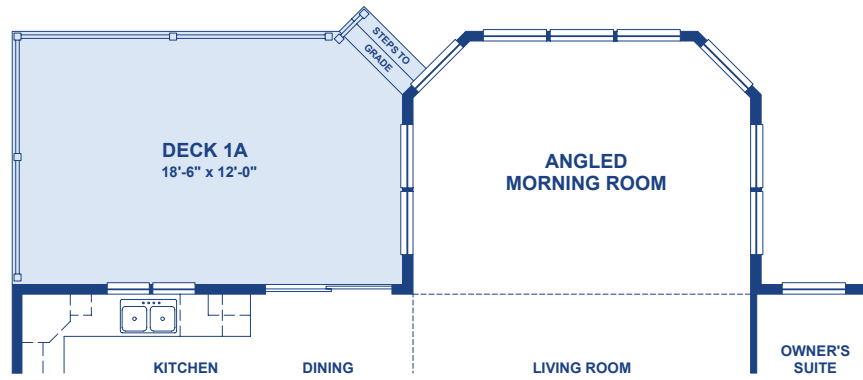


Optional Deck 2
02001

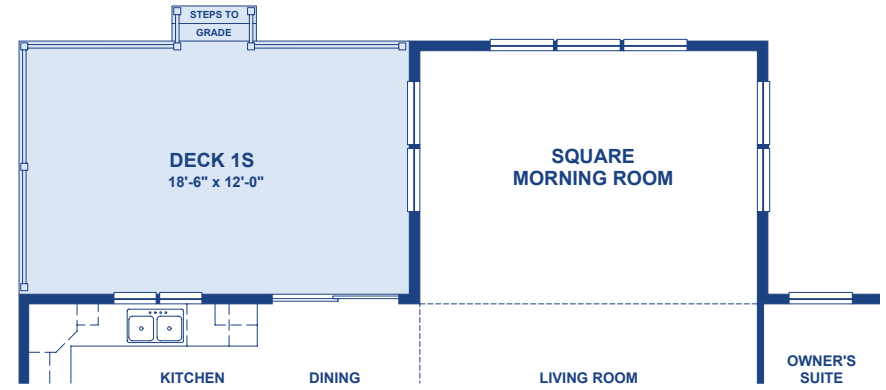
THE RESTON

DECK AND MORNING ROOM COMBINATION OPTIONS

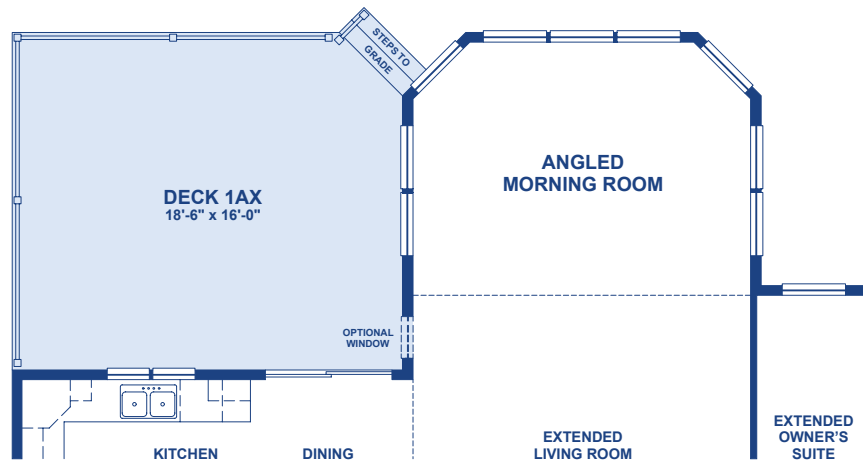
 = Optional Feature



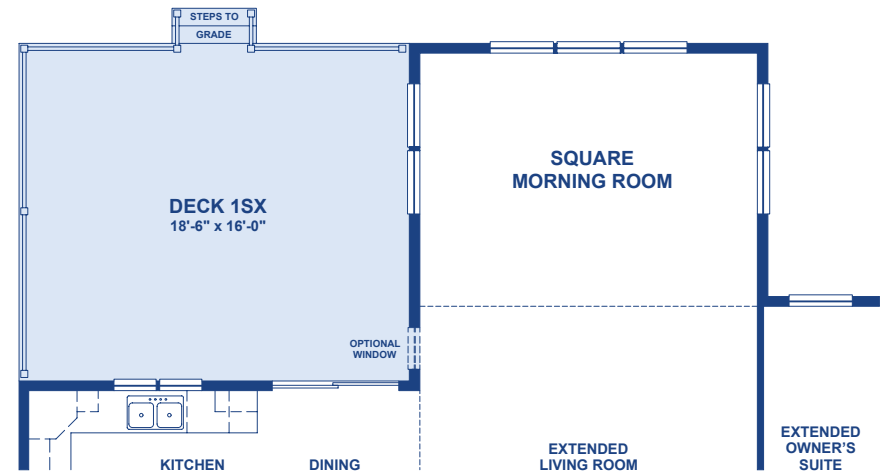
Optional Deck 1A
(for Angled Morning Room)
02010



Optional Deck 1S
(for Square Morning Room)
02020



Optional Deck 1AX
(for Angled Morning Room with Extension)
02004



Optional Deck 1SX
(for Square Morning Room with Extension)
02005

Choose Your Favorite From These
Two Distinctive Exterior Styles

The Heritage Elevation



The Traditional Elevation



NOTE: Plans, specifications and features are regularly updated. Please be sure to view the **LATEST** version of this information at: **aBetterHouse.com**

16255 Sussex Highway, Bridgeville, DE 19933

ItsJustaBetterHouse.com • 302-337-0400

Note: Elevations are artist's conception and may vary slightly from precise and most current blue prints and specifications. Elevations shown contain optional features and upgrades. See your New Home Sales Advisor for details on standard features for the Reston. Not all elevations are available in all communities. **1/8/2026**