



The Nelson Lakeview Elevation
(Shown with options)

2,405 – 3,941 Sq. Ft. | 3 - 5 BR | 3.5 BA | 1 or 2 Story

THE NELSON

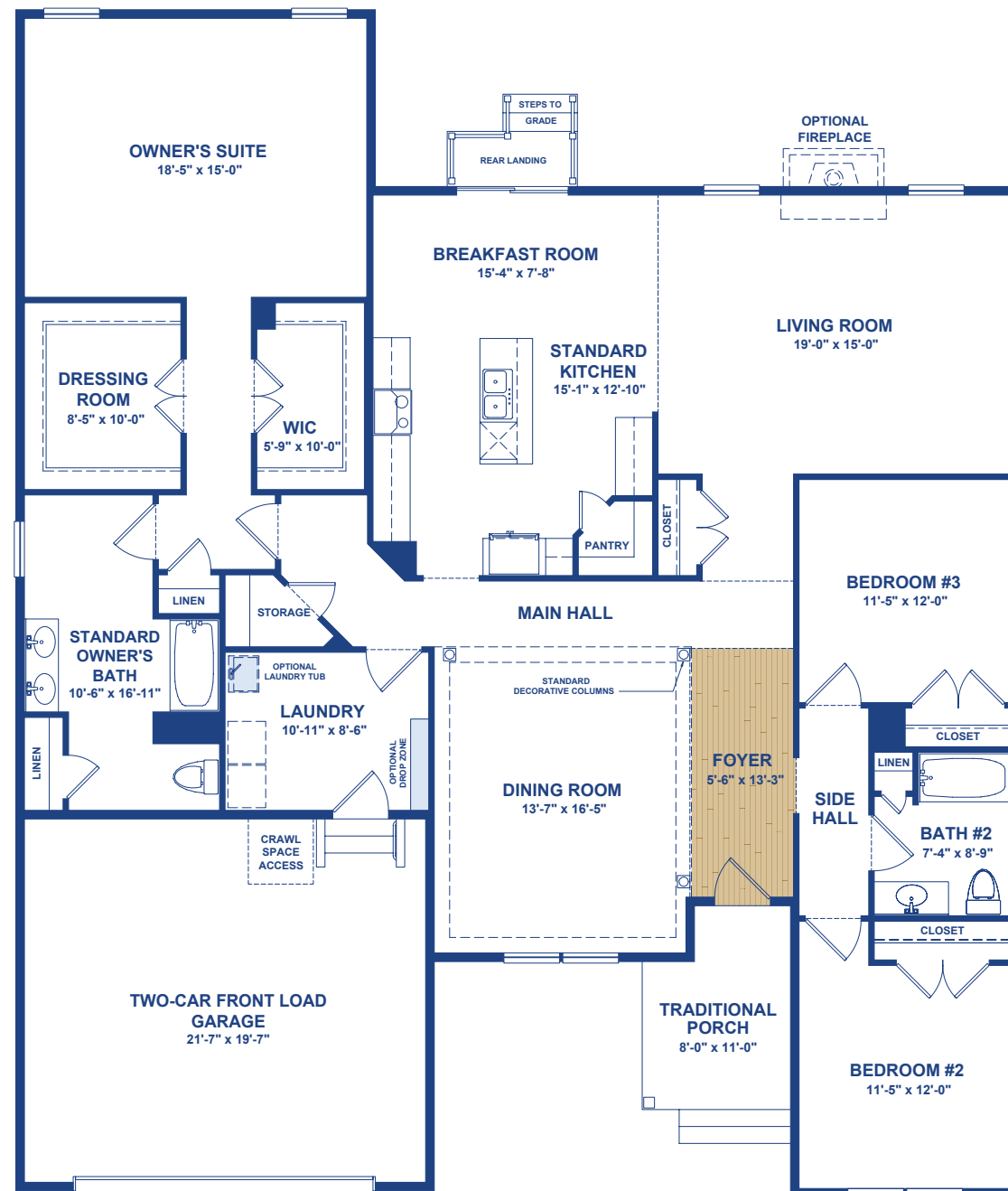
FIRST FLOOR PLAN

Thoughtfully Designed To Fit Your Lifestyle.

With a formal Dining Room and a generously sized Kitchen and Living Room, the Nelson is a versatile and comfortable home with three bedrooms on the main floor. Perfectly designed for entertaining with a choice of several kitchen configurations, the Nelson easily accommodates all families, big and small.

The secluded Owner's Suite is tucked away for added privacy and includes a large Bath and walk-in closet. The other two Bedrooms share a hall Bath. Options like a Powder Bath, Morning Room and second floor configurations are also available to further customize the Nelson to fit your lifestyle. ■

All dimensions are approximate. Floor plans are artist's conception and may vary slightly from precise and most current blue prints and specifications. Plans and elevations may show options not included in the base price. Details subject to change without notice.



One-Story Floor Plan (Traditional Elevation Shown)

THE NELSON

For Even More Space And Flexibility, Choose From:

Dining Room Conversion –
An opportunity for an extra Bedroom or an Office.

Optional Second Floor –
Expand your home to up to five bedrooms and three and a half baths.

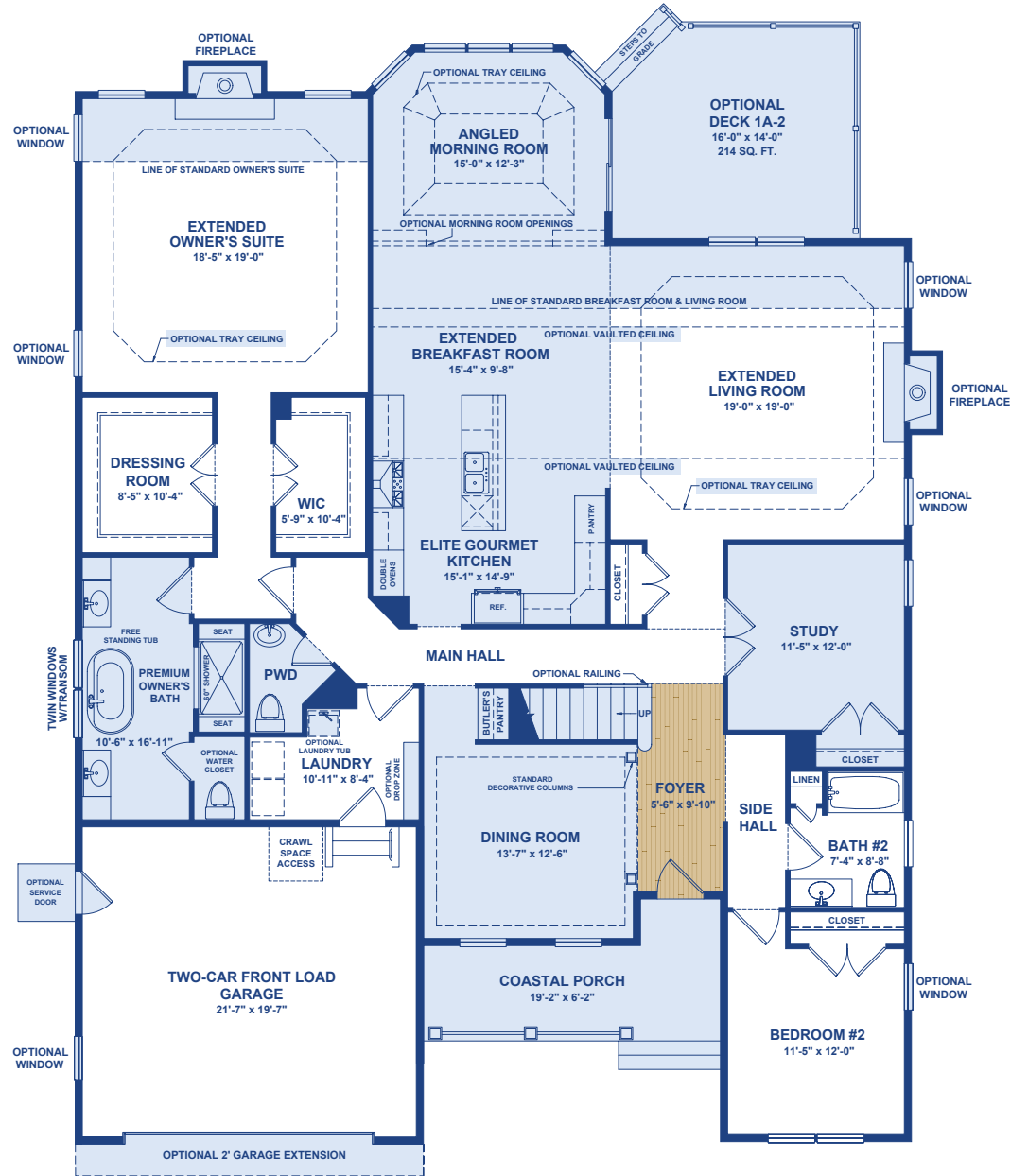
Select from these options to expand your living space:

- Living Room/Breakfast Extension
- Morning Room
- Owner's Super Bath
- Second Floor

Popular options also include:

- Gourmet Kitchen
- Rear Deck
- Premium Owner's Bath
- Powder Room
- Garage Extension

POPULAR FIRST FLOOR OPTIONS



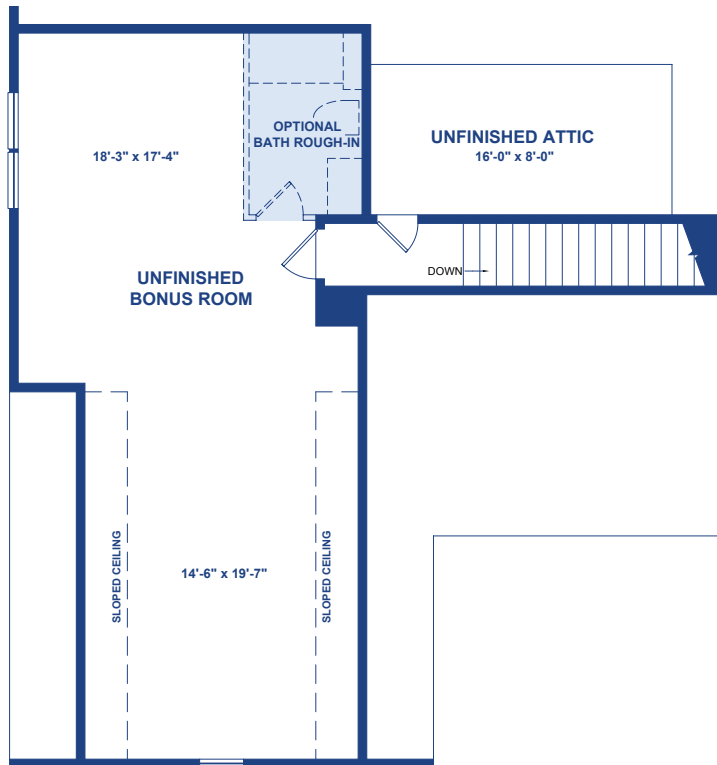
□ = Optional Feature

Popular Options Shown:

- 2' Garage Extension 00350
- Garage Service Door 00160
- Coastal Elevation Porch
- Extended Owner's Suite 00742
- Fireplace in Owner's Suite 00288, 00289
- Premium Owner's Bath 00942
- Angled Morning Room 00727
- Elite Gourmet Kitchen 00401
- Study in lieu of Bedroom #3 00926
- Extended Living Room/Breakfast Room 00510
- Living Room/Breakfast Room Vaulted Ceiling 00975/00921 (with extension)
- Butler's Pantry in Dining Room 00100
- Fireplace in Living Room 00284, 00287
- Deck 1A-2 02014
- Powder Room 00780

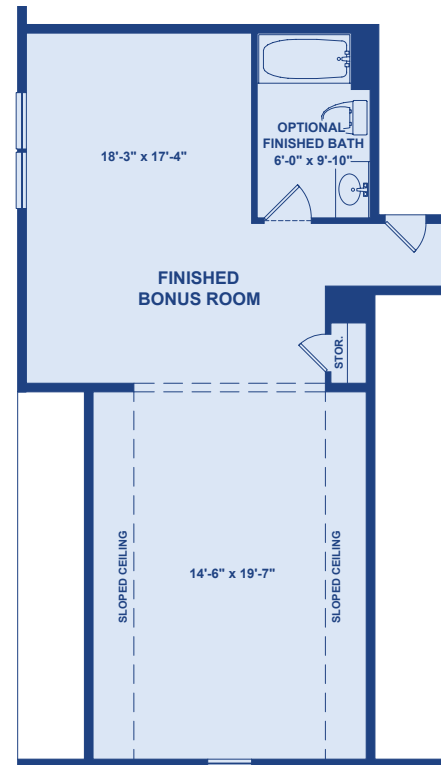
Two-Story Floor Plan With Popular **Options** (Coastal Elevation Shown)

 = Optional Feature



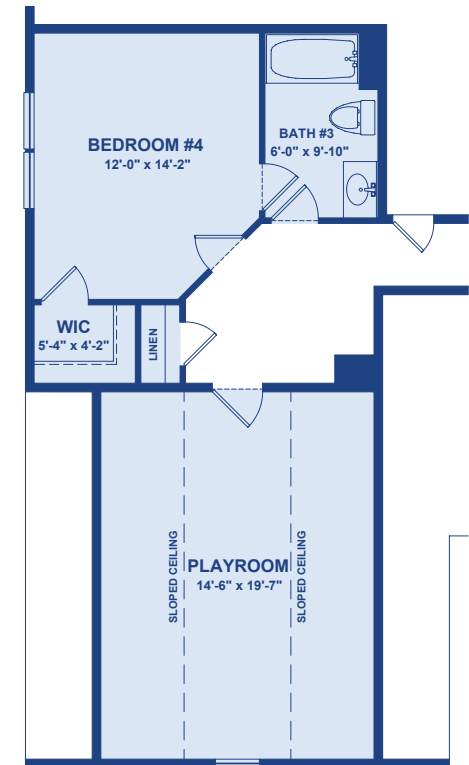
Standard Unfinished
Second Floor Plan
00892

(Optional Bath Rough-In only includes water supply and drain pipes)



Optional Bonus Room 00893

Optional Bonus Room
with Full Bath 00889



Optional Finished Bedroom #4,
Playroom and Full Bath
00894

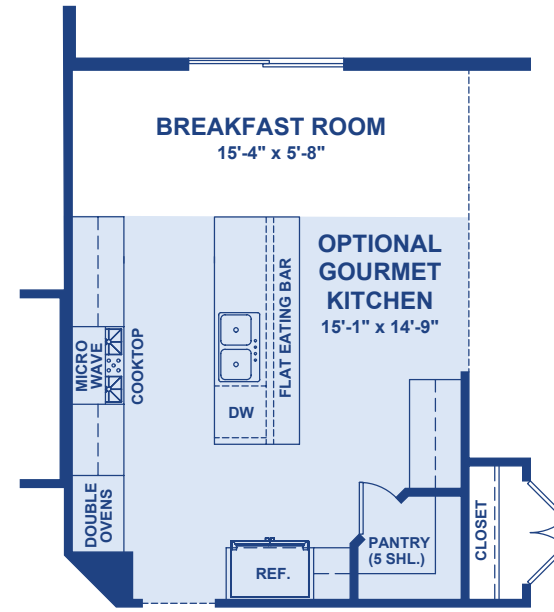
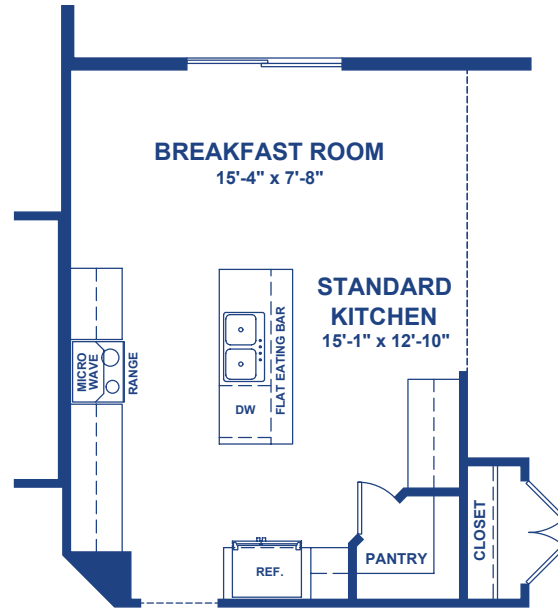
THE NELSON

GOURMET KITCHEN OPTIONS WITH MICROWAVE ABOVE COOKTOP

 = Optional Feature

Standard Kitchen

The Standard Kitchen includes a standard appliance package with microwave above a 30" range.



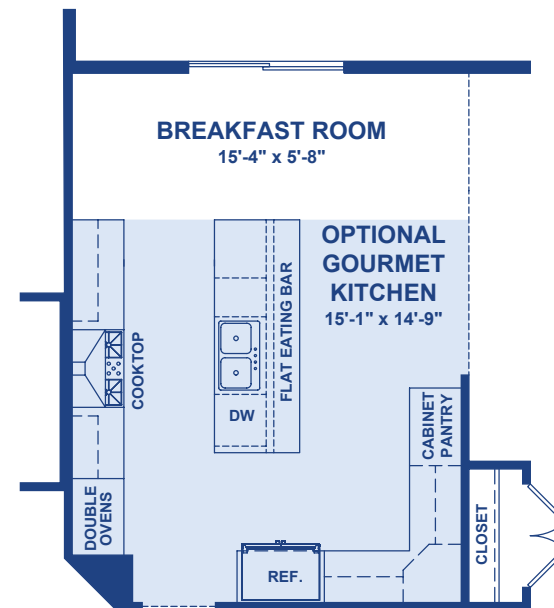
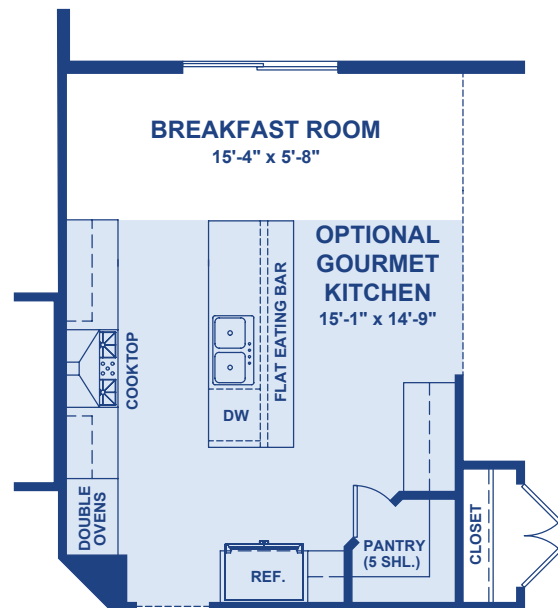
Optional Gourmet Kitchen 00400

The Optional Gourmet Kitchen appliance package includes a double wall oven, a 36" cooktop and adds a larger island.

Optional Gourmet Kitchen

(shown with range hood above cooktop)
00403

The Optional Gourmet also offers the option of a range hood above the cooktop in lieu of microwave.



Optional Elite Gourmet Kitchen 00401

The Optional Elite Gourmet includes glass accented upper cabinets, decorative end panels, range hood and built-in microwave in island, cushion close doors and drawers, and stainless steel appliance package.

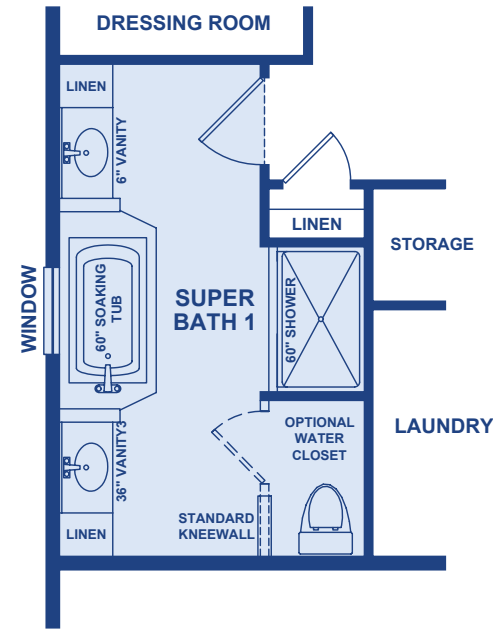
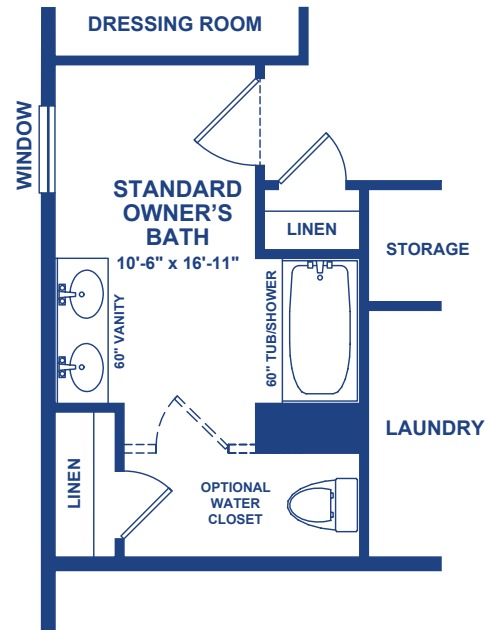
THE NELSON

OWNER'S BATH OPTIONS

 = Optional Feature

Standard Bath

The Standard Bath includes a 60" cultured marble vanity with dual sinks and fiberglass tub/shower combination.

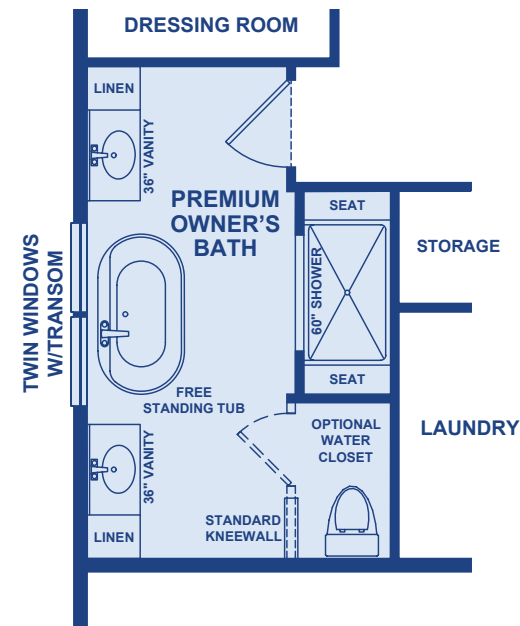
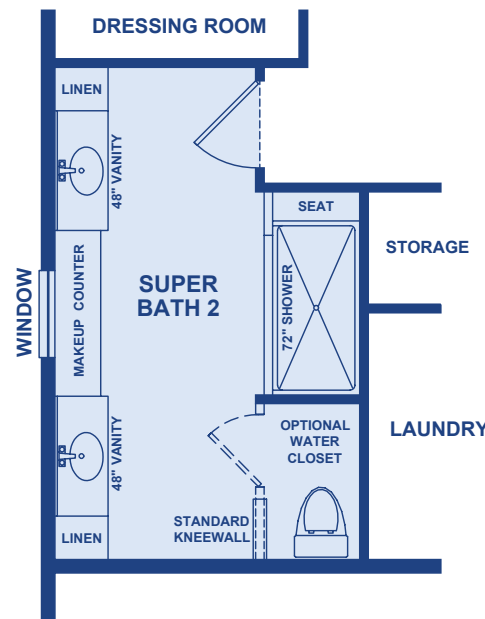


Optional Super Bath 1 00935

Optional Super Bath 1 includes a 60" tile-surround shower with glass bypass shower door and separate 60" soaking tub with tile deck. A freestanding tub/shower may be added as an option.

Optional Super Bath 2 00955

Optional Super Bath 2 replaces the standard tub with a 7-foot shower tiled-to-ceiling with bench seat, mosaic tiled shower floor, semi-frameless glass shower door and a recessed light over the shower.

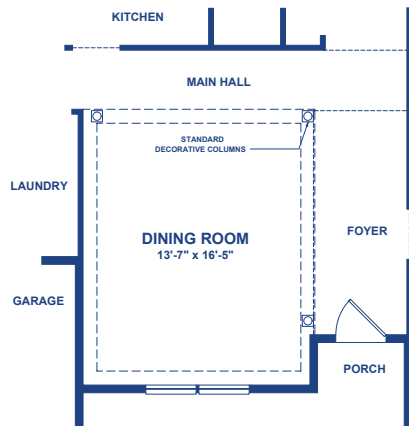


Optional Premium Bath 00942

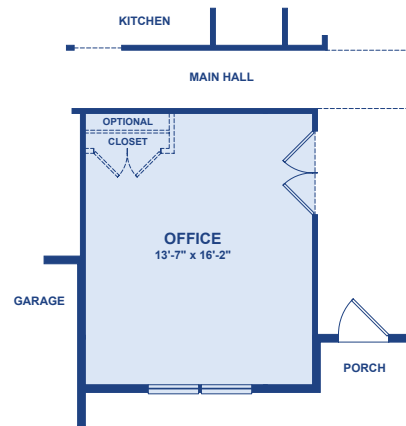
Optional Premium Bath replaces the standard tub with a free-standing tub and features a 7-foot shower tiled-to-ceiling with dual bench seats, mosaic tiled shower floor, frameless glass shower door, recessed light over the shower and twin window with transom.

Options for One-Story Floor Plan

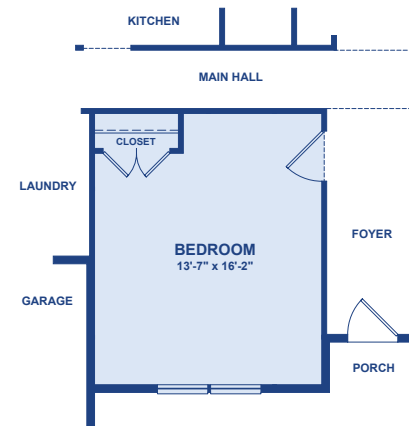
 = Optional Feature



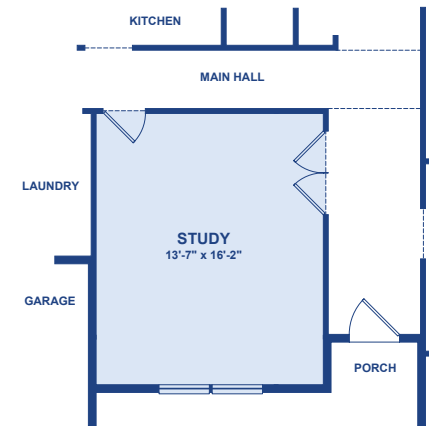
Standard Dining Room
(One-Story Floor Plan shown)



Optional Office
(in lieu of Dining Room)
00135

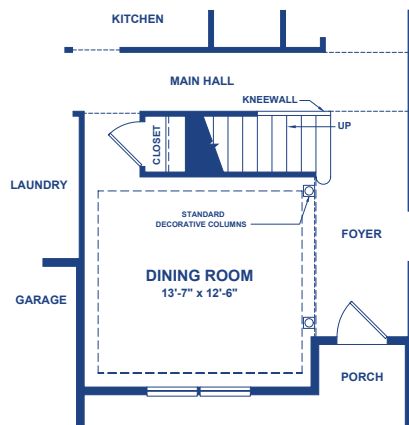


Optional Bedroom
(in lieu of Dining Room)
00130

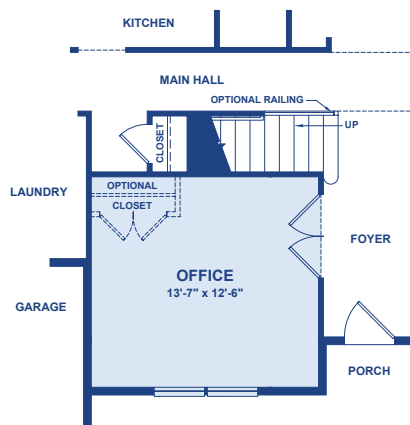


Optional Front Study
(in lieu of Dining Room)
00134

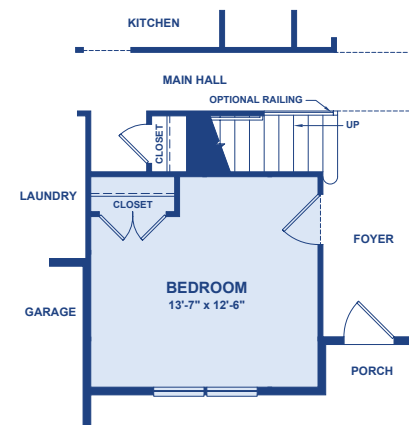
Options for Two-Story Floor Plan



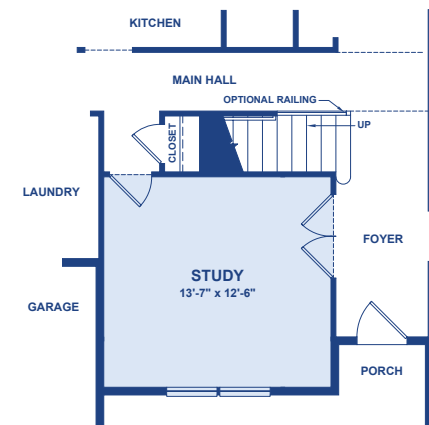
Standard Dining Room
(Two-Story Floor Plan shown)



Optional Office
(in lieu of Dining Room)
00135



Optional Bedroom
(in lieu of Dining Room)
00130

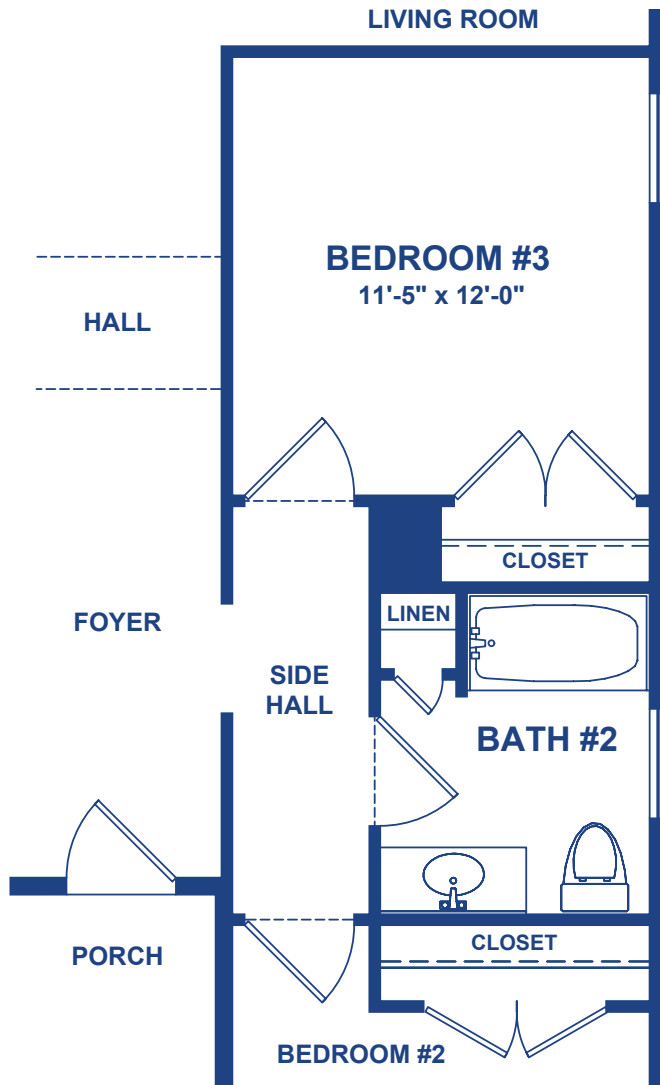


Optional Front Study
(in lieu of Dining Room)
00134

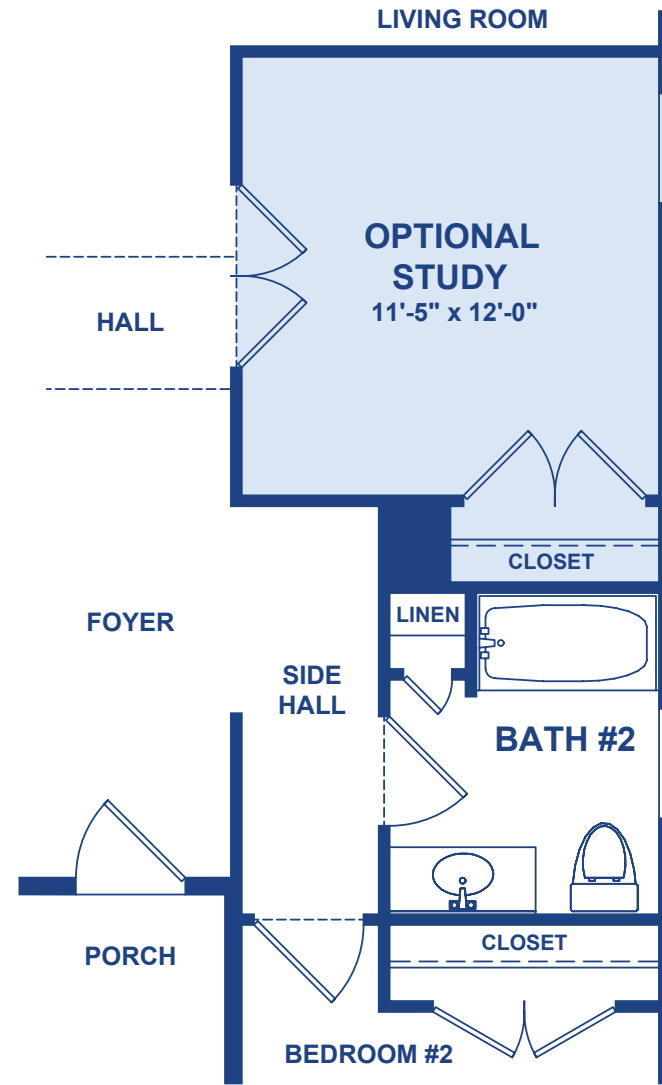
THE NELSON

BEDROOM #3 CONVERSION OPTION

 = Optional Feature

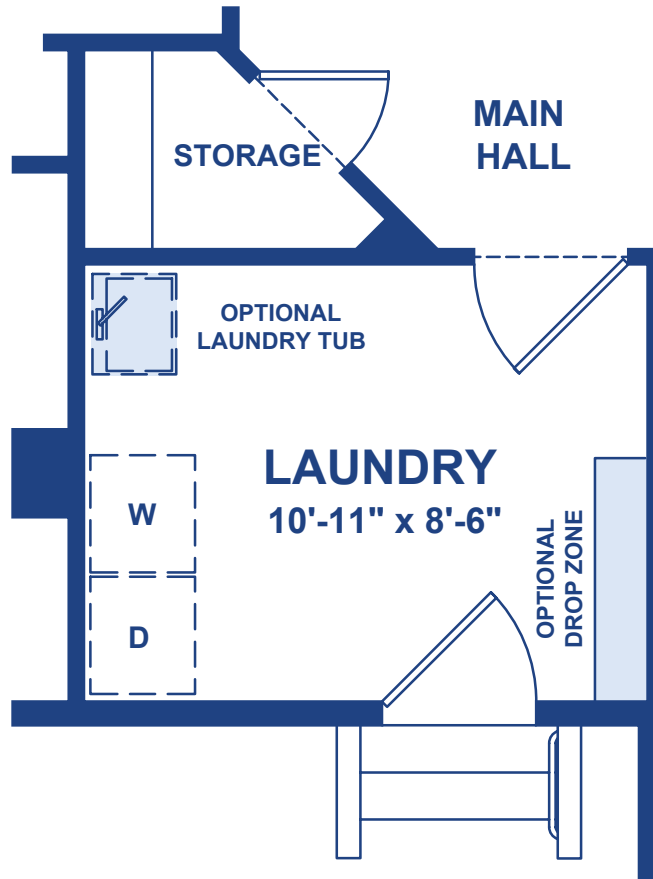


Standard Bedroom #3

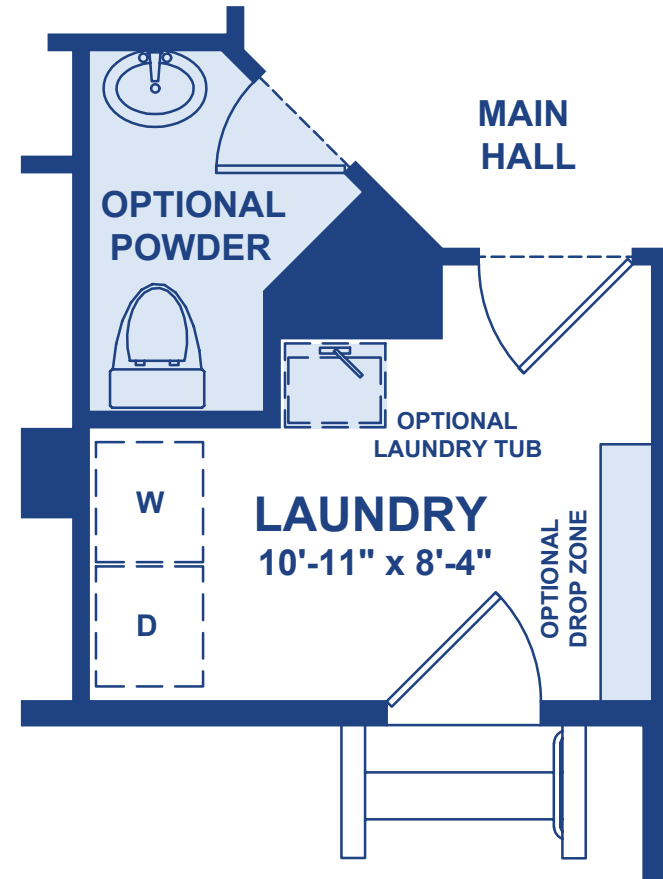


Optional Study
(in lieu of Bedroom #3)
00926

 = Optional Feature

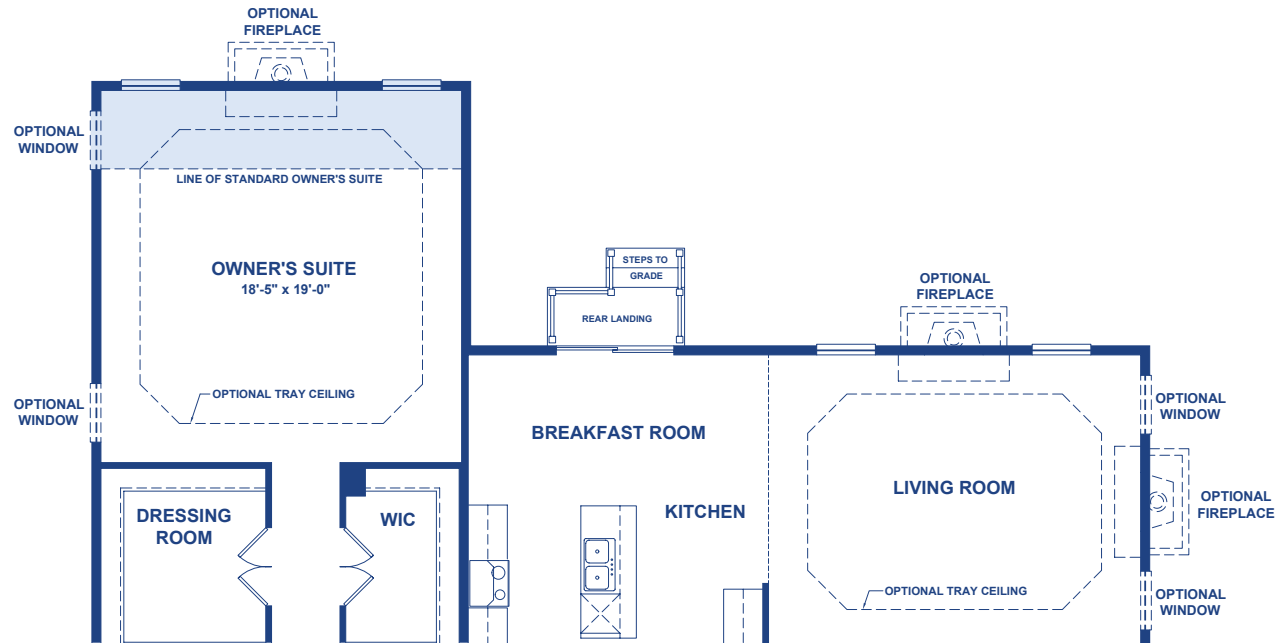


Standard Laundry Room

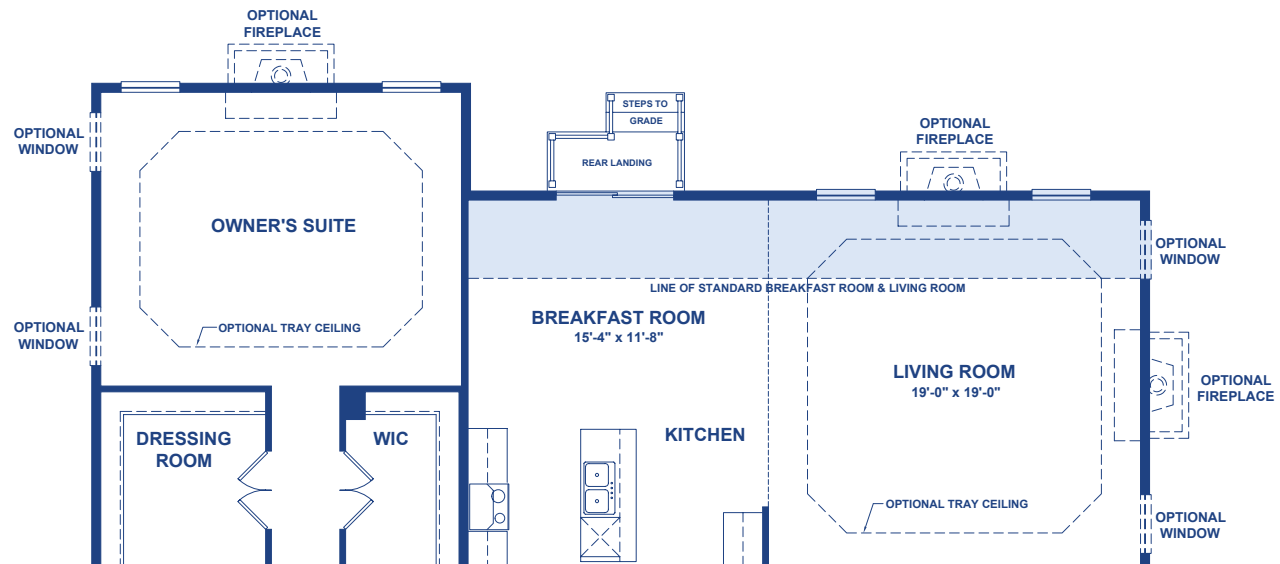


Optional Powder Room
00780

 = Optional Feature

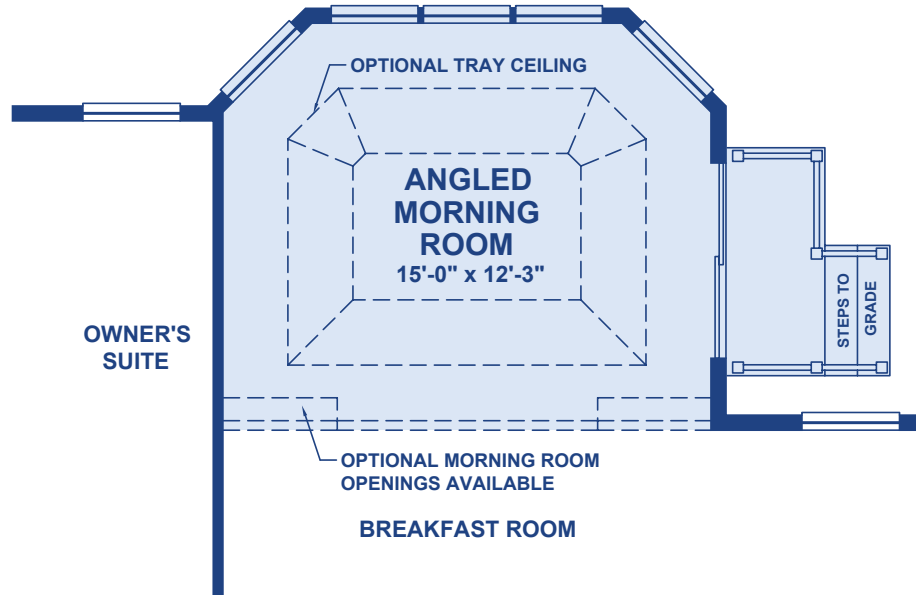


Optional Owner's Suite Extension
00742

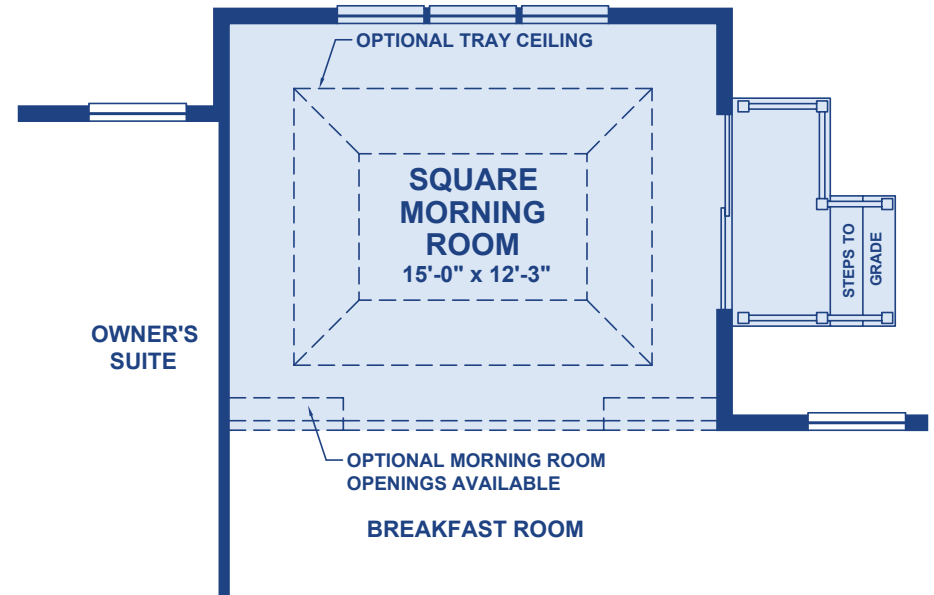


Optional Living Room/Breakfast Extension
00510

 = Optional Feature

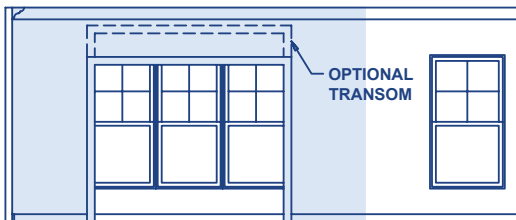


Optional Angled Morning Room
00727

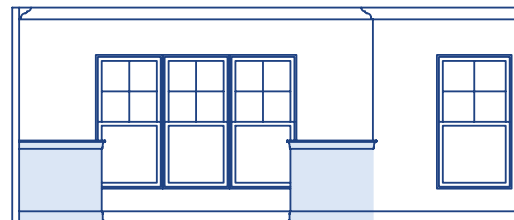


Optional Square Morning Room
00726

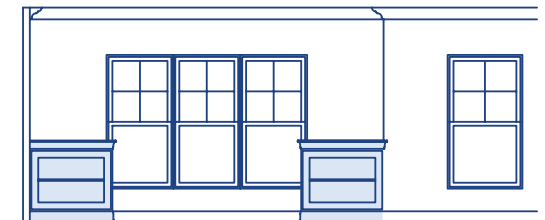
Optional Morning Room Openings



Optional Cased Opening
50116

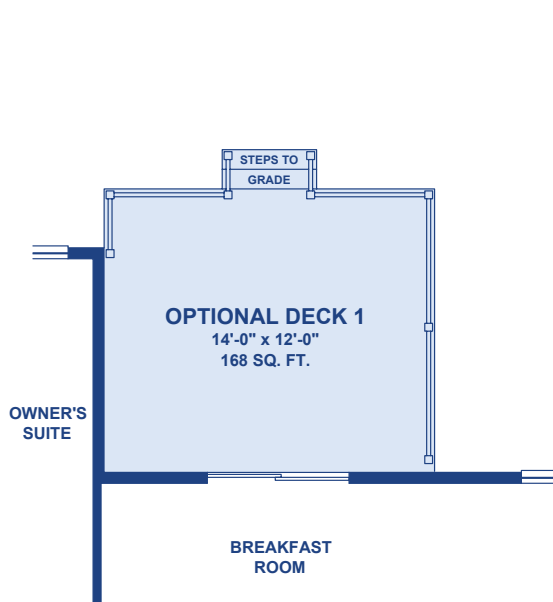


Optional Knee Walls
50117



Optional Book Shelves
50125

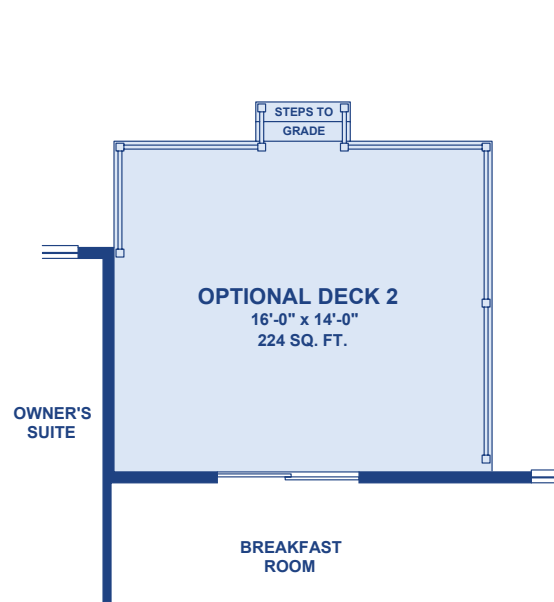
 = Optional Feature



Optional Deck 1

02000

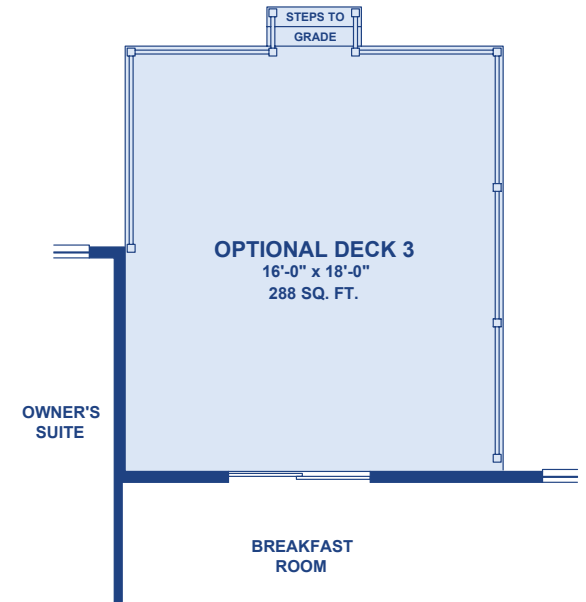
02040 (for Living Room/Breakfast Extension)



Optional Deck 2

02001

02041 (for Living Room/Breakfast Extension)



Optional Deck 3

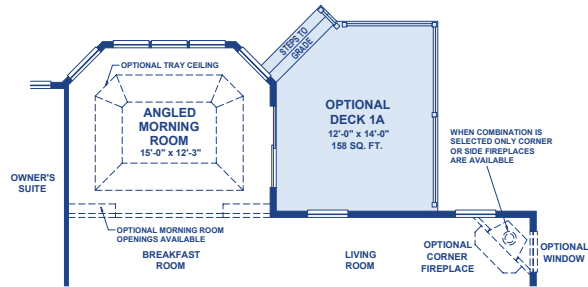
02002

02042 (for Living Room/Breakfast Extension)

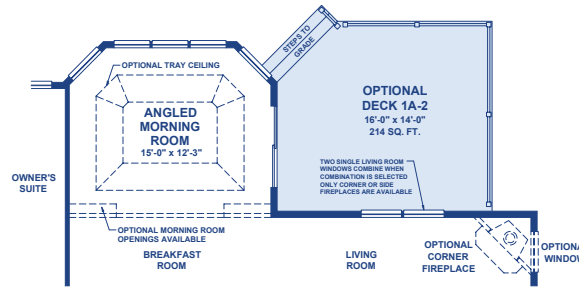
THE NELSON

DECK AND MORNING ROOM COMBINATION OPTIONS

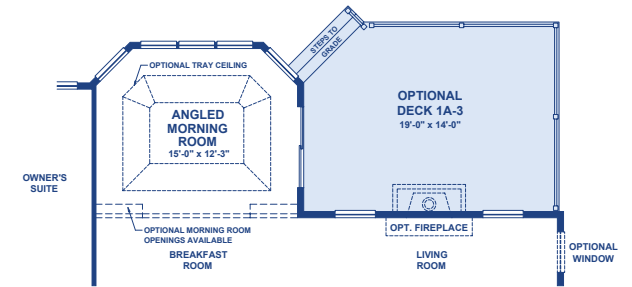
 = Optional Feature



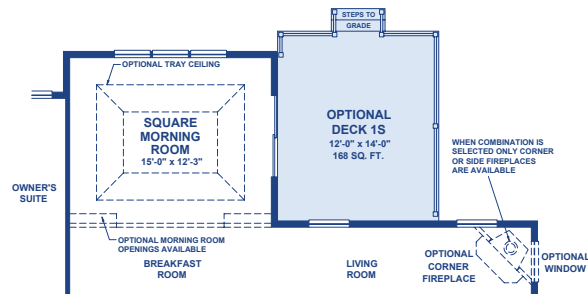
Optional Deck 1A
(only available with Angled Morning Room)
02010



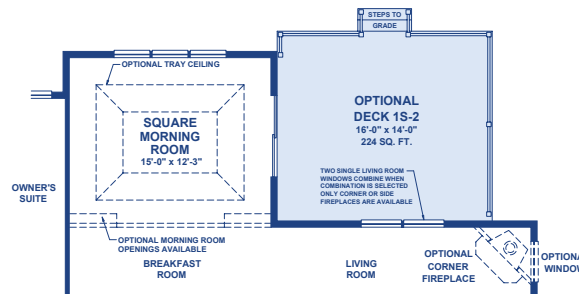
Optional Deck 1A-2
(only available with Angled Morning Room)
02014



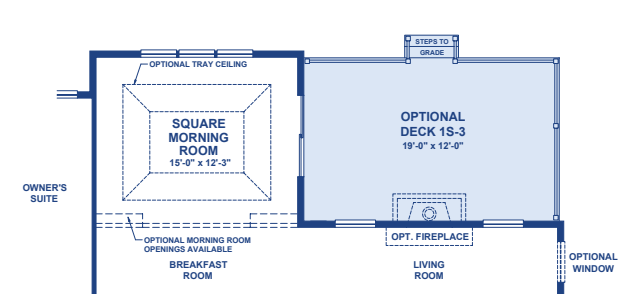
Optional Deck 1A-3
(only available with Angled Morning Room)
02015



Optional Deck 1S
(only available with Square Morning Room)
02020



Optional Deck 1S-2
(only available with Square Morning Room)
02022

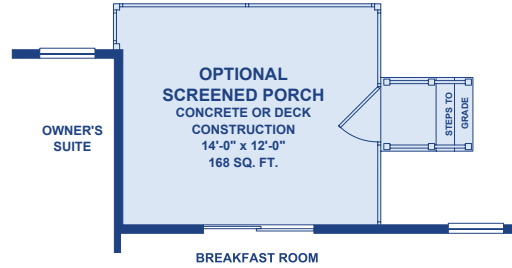


Optional Deck 1S-3
(only available with Square Morning Room)
02023

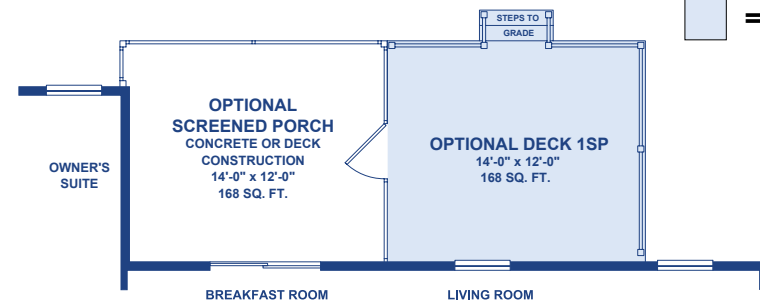
THE NELSON

SCREENED PORCH AND COMBINATION OPTIONS

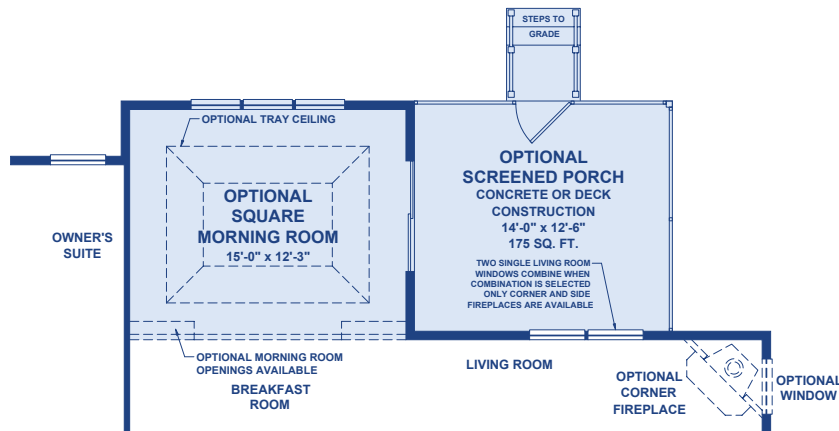
 = Optional Feature



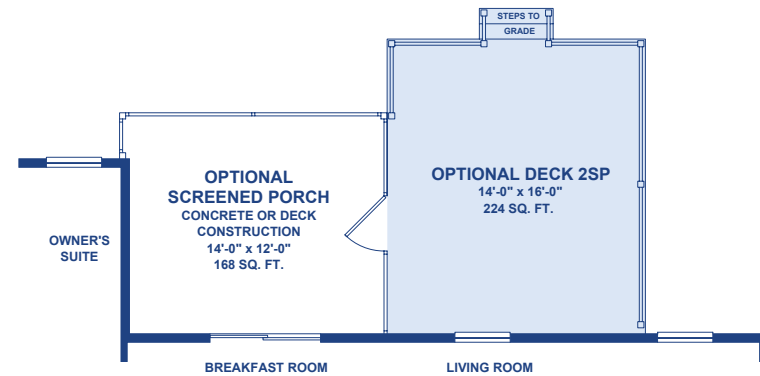
Optional Screened Porch
00820, 00825



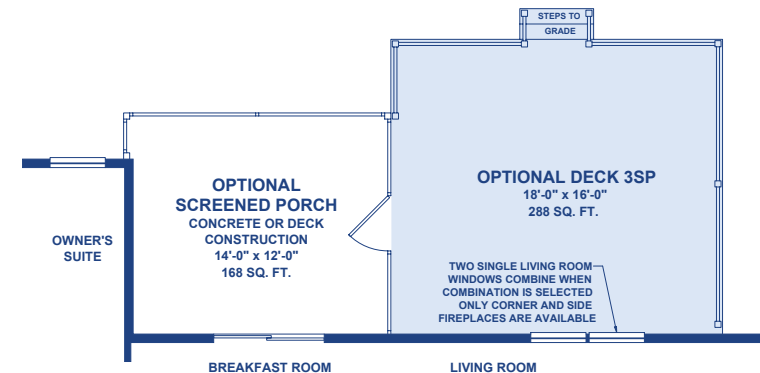
Optional Deck 1SP 02030
(only available with Screened Porch)



**Optional Screened Porch with
Square Morning Room**
00837, 00839



Optional Deck 2SP 02031
(only available with Screened Porch)



Optional Deck 3SP 02032
(only available with Screened Porch)

 = Optional Feature

THE NELSON

The Lakeview Elevation



Shown with optional upgraded carriage style garage door and upgraded glass entry door

EXTERIOR OPTIONS

Choose Your Favorite
From These Four
Distinctive Exterior Styles

The Coastal Elevation



Shown with optional stone watertable and upgraded carriage style garage door

The Heritage Elevation



Shown with optional upgraded carriage style garage door and metal roof accents

The Traditional Elevation (1-Story)



*The Traditional Elevation is available as a 1-story home only

NOTE: Plans, specifications and features are regularly updated. Please be sure to view the **LATEST** version of this information at: **aBetterHouse.com**

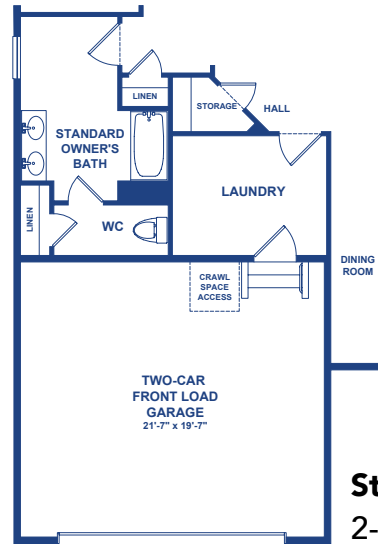


16255 Sussex Highway, Bridgeville, DE 19933

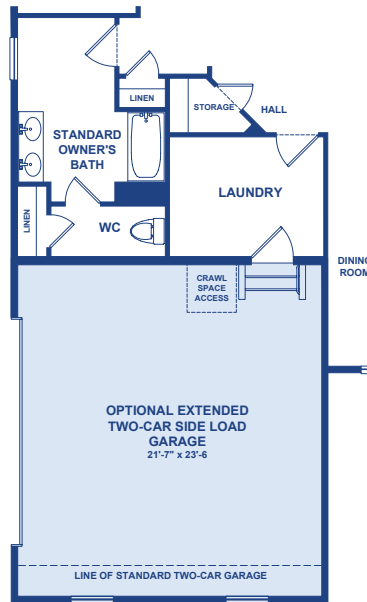
Its Just a Better House.com • 302-337-0400

Note: Elevations are artist's conception and may vary slightly from precise and most current blue prints and specifications. Elevations shown may contain optional features and upgrades. See your Community Sales Manager for details on standard features for the Nelson. Not all elevations are available in all communities. **3/18/2026**

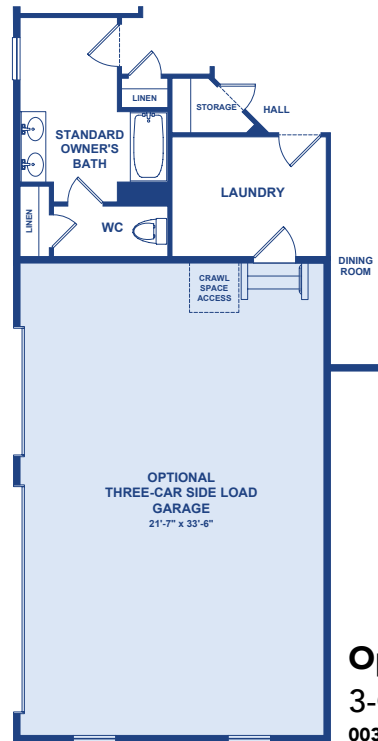
 = Optional Feature



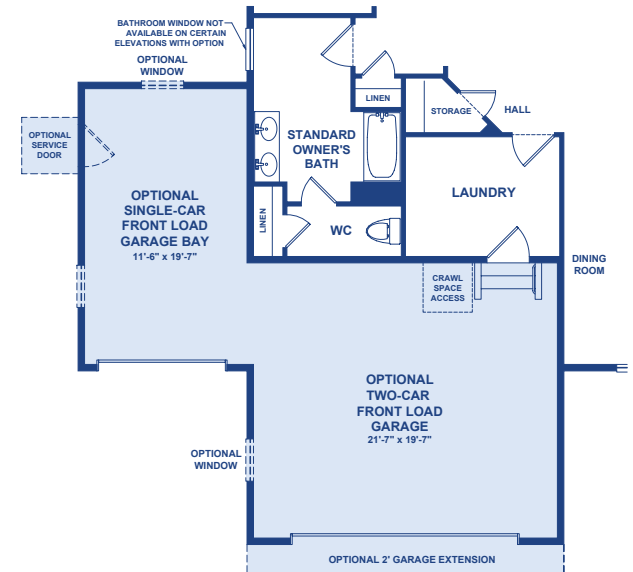
**Standard Front Load
2-Car Garage**



**Optional Extended
Side Load 2-Car Garage**
00350



**Optional Side Load
3-Car Garage**
00370



**Optional Front Load
3-Car Garage**
00360