

OVERVIEW SASSAFRAS II



Sqft	Beds	Baths
2,226	3	2

Built in These Communities

Greene Hill Farm Estates - Smyrna, DE

The Reserve at Ponds of Odessa - Single
Family Homes - Middletown, DE

About this Floor Plan

3 bedroom, 2 bath rancher, spacious open floor plan. Tours by appointment only—please call 302-865-0759 to schedule.

 Illustrations are artists' concepts and may vary in detail from the actual plans and specifications.

Benchmarkbuilders.com

Benchmark Builders reserves the right to change prices, plans, elevations, specifications, square footage and availability without prior notice or obligation. Renderings are for representation only and may vary from actual home. Elevations offered vary by community and square footages are approximate dependent upon elevations and/or options selected. Pricing varies by Elevation. Elevation shown may not match starting price. Please contact the New Homes Specialist for details. Not responsible for typographical errors. Benchmark Builders and the Benchmark logo are registered trademarks of Benchmark Builders, Inc. All rights reserved Effective 04/02/2026

ELEVATIONS SASSAFRAS II

NOTE: Images shown here represent all elevations and options for the standard floor plan, however, availability of each varies in communities offering this plan. Additional elevations not shown may be available.



Traditional Elevation



Farmhouse Elevation



Colonial Elevation

Benchmarkbuilders.com

Benchmark Builders reserves the right to change prices, plans, elevations, specifications, square footage and availability without prior notice or obligation. Renderings are for representation only and may vary from actual home. Elevations offered vary by community and square footages are approximate dependent upon elevations and/or options selected. Pricing varies by Elevation. Elevation shown may not match starting price. Please contact the New Homes Specialist for details. Not responsible for typographical errors. Benchmark Builders and the Benchmark logo are registered trademarks of Benchmark Builders, Inc. All rights reserved Effective 04/02/2026

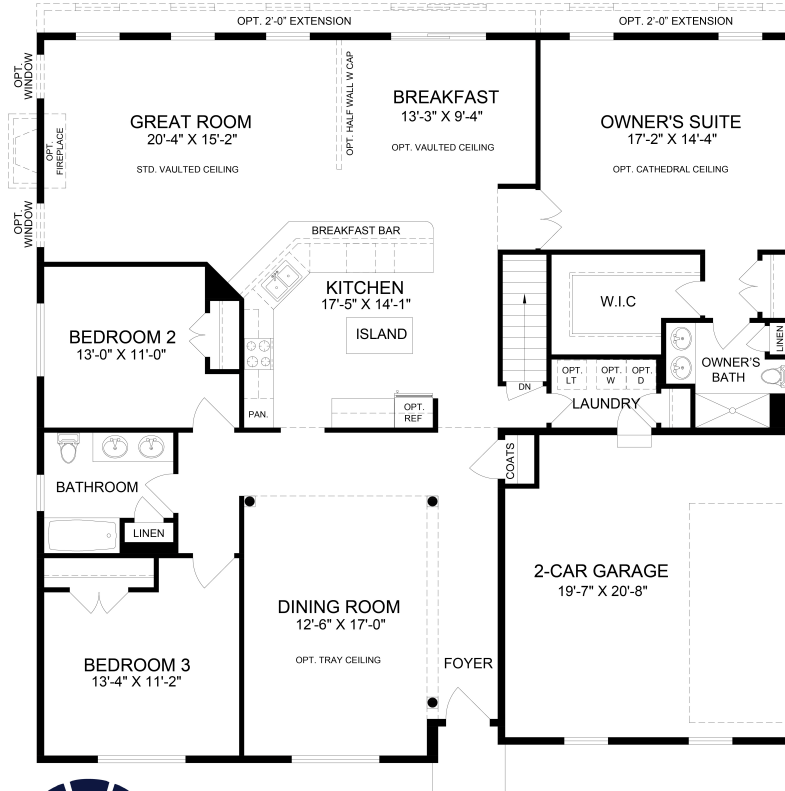
FLOOR PLANS SASSAFRAS II

NOTE: Images shown here represent all elevations and options for the standard floor plan, however, availability of each varies in communities offering this plan.

THE SASSAFRAS II

As built at *Greene Hill Farm Estates*

First Floor



Details and dimensions shown are approximate and subject to change. Illustrations are artist's concepts and may vary in detail from the actual plans and specifications. The right is reserved to make changes without notice or obligation. Floor plans represent various elevations. Other elevations have walls, windows and room sizes that may vary slightly and are not shown. Please consult with the community Sales Manager for alternate floor plans, options and features.

Benchmarkbuilders.com

Benchmark Builders reserves the right to change prices, plans, elevations, specifications, square footage and availability without prior notice or obligation. Renderings are for representation only and may vary from actual home. Elevations offered vary by community and square footages are approximate dependent upon elevations and/or options selected. Pricing varies by Elevation. Elevation shown may not match starting price. Please contact the New Homes Specialist for details. Not responsible for typographical errors. Benchmark Builders and the Benchmark logo are registered trademarks of Benchmark Builders, Inc. All rights reserved Effective 04/02/2026

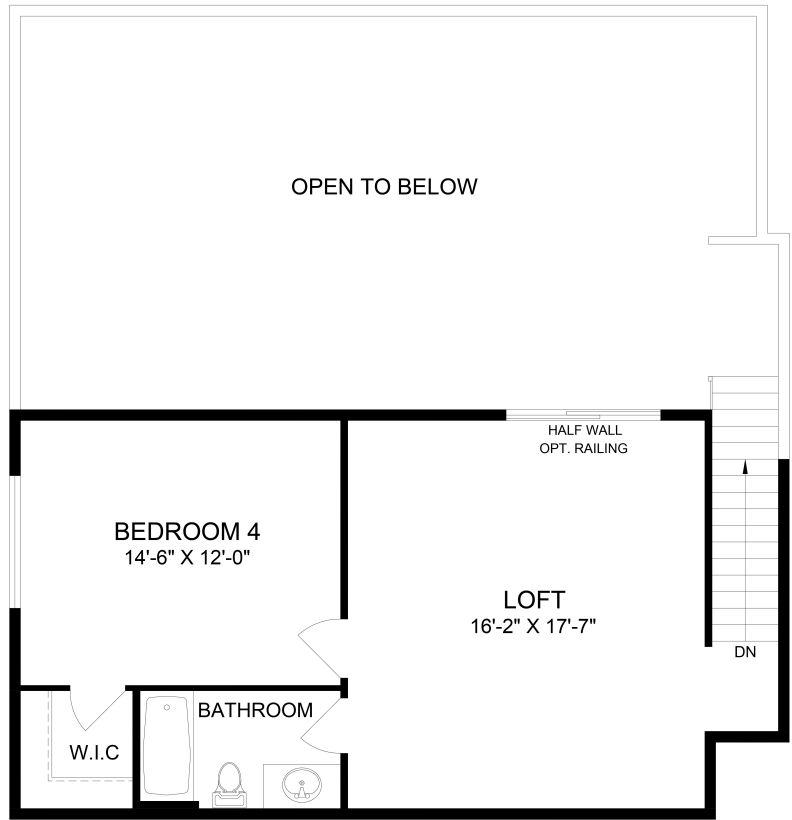
FLOOR PLANS SASSAFRAS II

NOTE: Images shown here represent all elevations and options for the standard floor plan, however, availability of each varies in communities offering this plan.

THE SASSAFRAS II

Opt. Second Floor

As built at Greene Hill Farm Estates



Details and dimensions shown are approximate and subject to change. Illustrations are artist's concepts and may vary in detail from the actual plans and specifications. The right is reserved to make changes without notice or obligation. Floor plans represent various elevations. Other elevations have walls, windows and room sizes that may vary slightly and are not shown. Please consult with the community Sales Manager for alternate floor plans, options and features.

Benchmarkbuilders.com

Benchmark Builders reserves the right to change prices, plans, elevations, specifications, square footage and availability without prior notice or obligation. Renderings are for representation only and may vary from actual home. Elevations offered vary by community and square footages are approximate dependent upon elevations and/or options selected. Pricing varies by Elevation. Elevation shown may not match starting price. Please contact the New Homes Specialist for details. Not responsible for typographical errors. Benchmark Builders and the Benchmark logo are registered trademarks of Benchmark Builders, Inc. All rights reserved Effective 04/02/2026

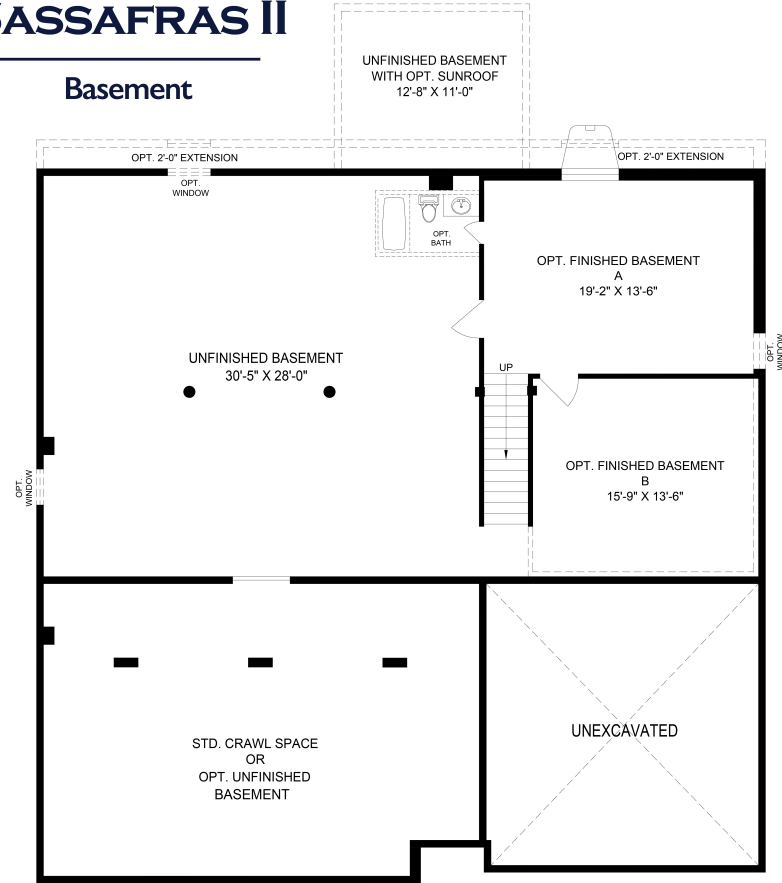
FLOOR PLANS SASSAFRAS II

NOTE: Images shown here represent all elevations and options for the standard floor plan, however, availability of each varies in communities offering this plan.

THE SASSAFRAS II

As built at *Greene Hill Farm Estates*

Basement



Details and dimensions shown are approximate and subject to change. Illustrations are artist's concepts and may vary in detail from the actual plans and specifications. The right is reserved to make changes without notice or obligation. Floor plans represent various elevations. Other elevations have walls, windows and room sizes that may vary slightly and are not shown. Please consult with the community Sales Manager for alternate floor plans, options and features.

Benchmarkbuilders.com

Benchmark Builders reserves the right to change prices, plans, elevations, specifications, square footage and availability without prior notice or obligation. Renderings are for representation only and may vary from actual home. Elevations offered vary by community and square footages are approximate dependent upon elevations and/or options selected. Pricing varies by Elevation. Elevation shown may not match starting price. Please contact the New Homes Specialist for details. Not responsible for typographical errors. Benchmark Builders and the Benchmark logo are registered trademarks of Benchmark Builders, Inc. All rights reserved Effective 04/02/2026