

OVERVIEW COCHRAN



Traditional

Stories	Sqft	Beds	Baths
2	3,700	4	2.5

Built in These Communities

Greene Hill Farm Estates - Smyrna, DE

Rothwell Estates - Middletown, DE

About this Floor Plan

Ideal for a growing family, the Cochran plan offers 4 spacious bedrooms with an option for a 5th bedroom and full bath on the 2nd floor. The main bedroom boasts 2 walk-in closets, a sitting room, and a large owner's bath with various features. Bedrooms 2 and 3 also have walk-in closets, and Bedroom 3 has its own sitting room. The main level includes a formal dining room, study, and flex room. The well-equipped kitchen features an island, walk-in pantry, granite countertops, and stainless appliances, opening to a large breakfast area and family room. You can add a sunroom or morning room for additional space. The 2-car side entry garage can be upgraded to a 3-car garage, and the basement offers ample opportunities for customization, such as a home gym or recreation room. Tours by appointment only—please call 302-865-0759 to schedule.

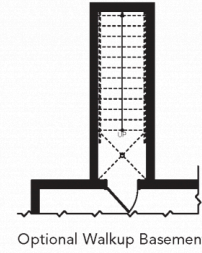
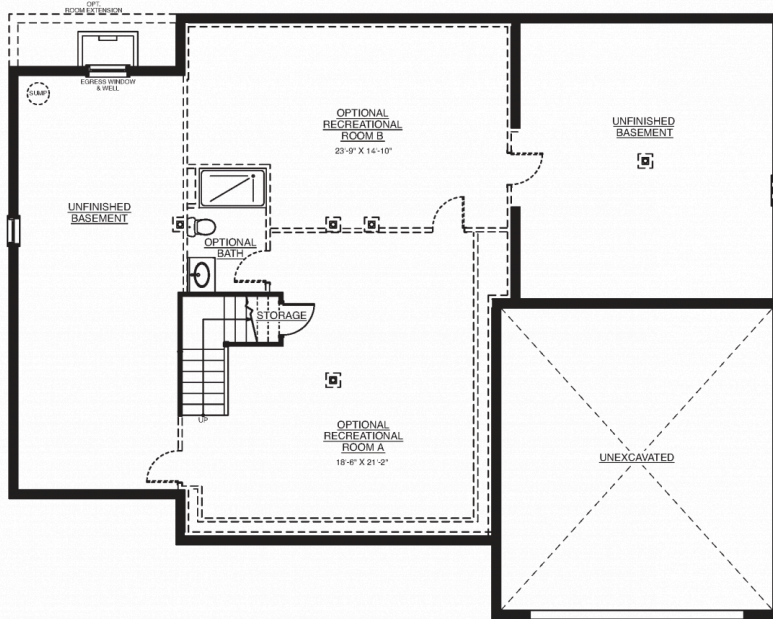
[Benchmarkbuilders.com](https://www.benchmarkbuilders.com)

Illustrations are artists' concepts and may vary in detail from the actual plans and specifications. Benchmark Builders reserves the right to change prices, plans, elevations, specifications, square footage and availability without prior notice or obligation. Renderings are for representation only and may vary from actual home. Elevations offered vary by community and square footages are approximate dependent upon elevations and/or options selected. Pricing varies by Elevation. Elevation shown may not match starting price. Please contact the New Homes Specialist for details. Not responsible for typographical errors. Benchmark Builders and the Benchmark logo are registered trademarks of Benchmark Builders, Inc. All rights reserved Effective 04/02/2026

FLOOR PLANS COCHRAN

NOTE: Images shown here represent all elevations and options for the standard floor plan, however, availability of each varies in communities offering this plan.

Basement



Benchmarkbuilders.com

Benchmark Builders reserves the right to change prices, plans, elevations, specifications, square footage and availability without prior notice or obligation. Renderings are for representation only and may vary from actual home. Elevations offered vary by community and square footages are approximate dependent upon elevations and/or options selected. Pricing varies by Elevation. Elevation shown may not match starting price. Please contact the New Homes Specialist for details. Not responsible for typographical errors. Benchmark Builders and the Benchmark logo are registered trademarks of Benchmark Builders, Inc. All rights reserved Effective 04/02/2026