

Kennedi

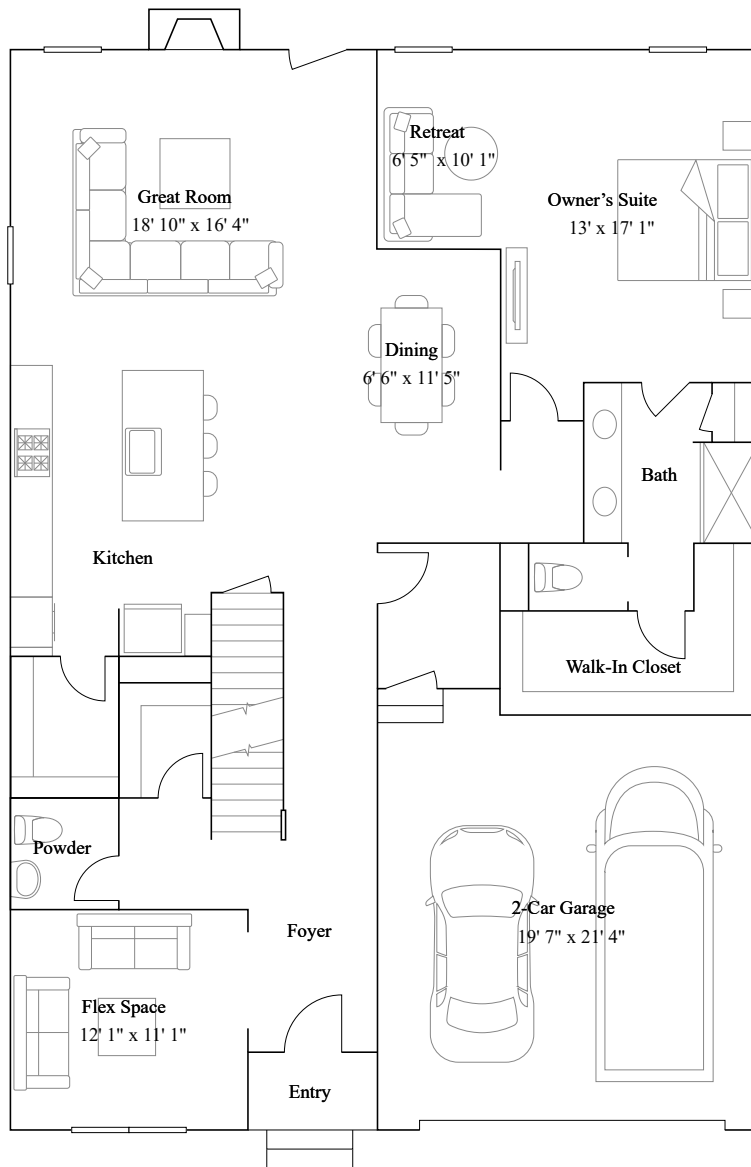
5 bd · 3 ba · 1 half ba · 3,324 ft²

Starting from \$671,990

(Prices as of January 20, 2026. All subject to change.)

Available options include: Optional owners bathtub, Optional office, Optional morning room, Optional finished basement with bathroom 4, Optional areaway, Condition morning room above

1st Floor



Kennedi

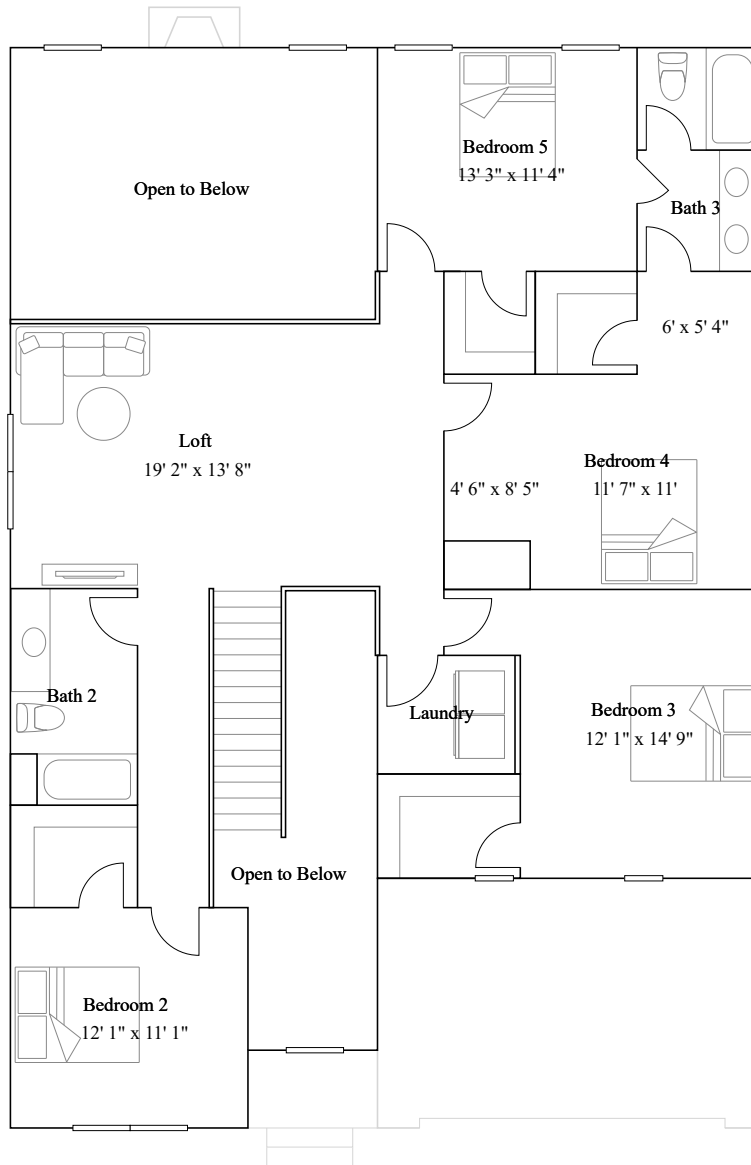
5 bd · 3 ba · 1 half ba · 3,324 ft²

Starting from \$671,990

(Prices as of January 20, 2026. All subject to change.)

Available options include: Optional owners bathtub, Optional office, Optional morning room, Optional finished basement with bathroom 4, Optional areaway, Condition morning room above

2nd Floor



Kennedi

5 bd · 3 ba · 1 half ba · 3,324 ft²

Starting from \$671,990

(Prices as of January 20, 2026. All subject to change.)

Available options include: Optional owners bathtub, Optional office, Optional morning room, Optional finished basement with bathroom 4, Optional areaway, Condition morning room above

Basement

