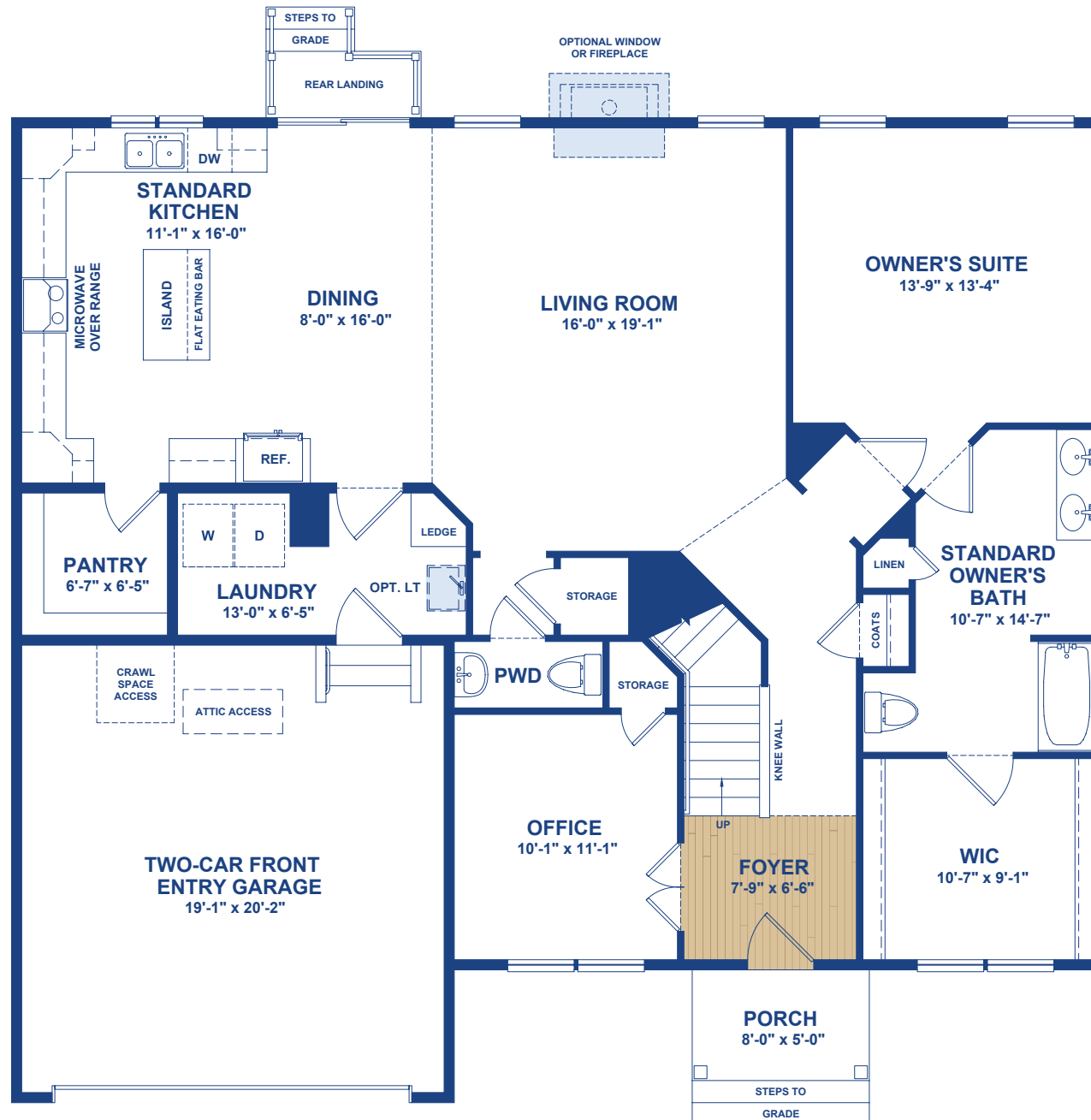




The Reston Heritage Elevation
(Shown with options)

2,663 – 3,067 Sq. Ft. | 4 - 5 BR | 3.5 BA | 2 Story

 = Optional Feature



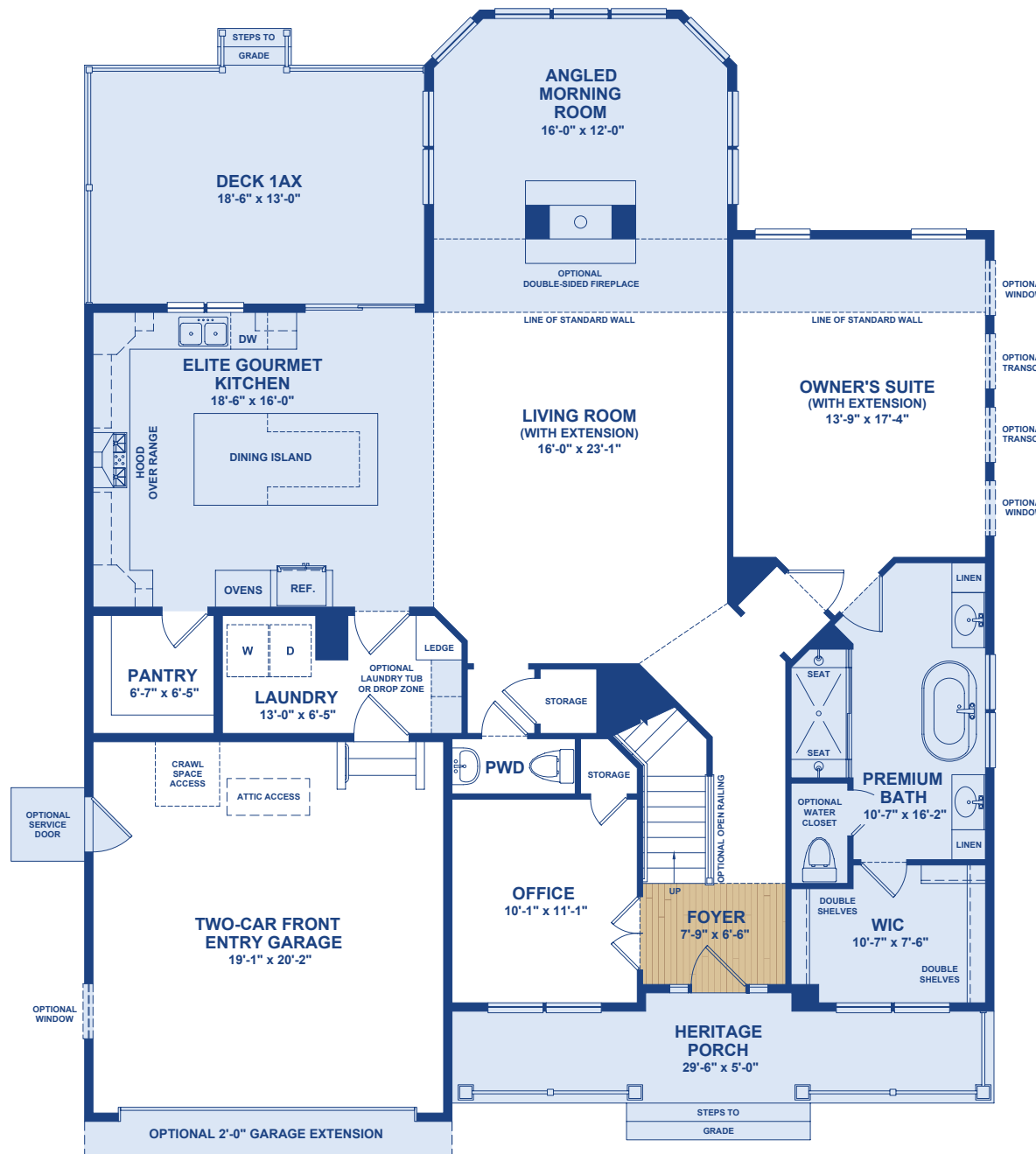
All dimensions are approximate. Floor plans are artist's conception and may vary slightly from precise and most current blue prints and specifications. Plans and elevations may show options not included in the base price. Details subject to change without notice.

Standard First Floor Plan
(Traditional Elevation Shown)

 = Optional Feature

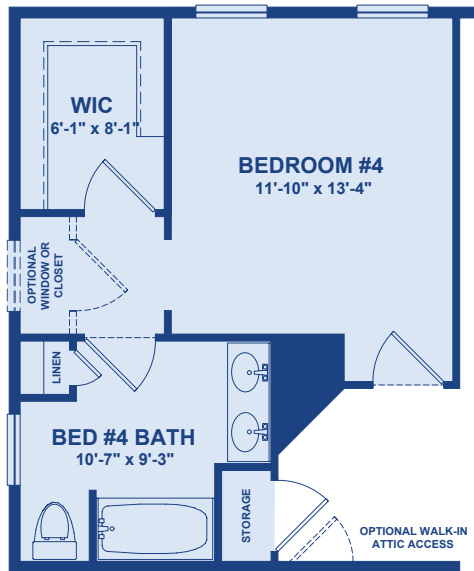
Popular Options Shown:

-  Heritage Elevation Porch 09910
-  4' Rear Living Room and Owners' Suite Extension 00465
-  Deck 1AX - Deck for Angled Morning Room with Living Room Extension 02004
-  Angled Morning Room 00727
-  Elite Gourmet Kitchen with Oversized Dining Island 00401 + 00431
-  Double-Sided Fireplace 00272
-  Garage Service Door 00160
-  Premium Owner's Bath with Water Closet 00942 + 00980
-  2' Garage Extension 00350



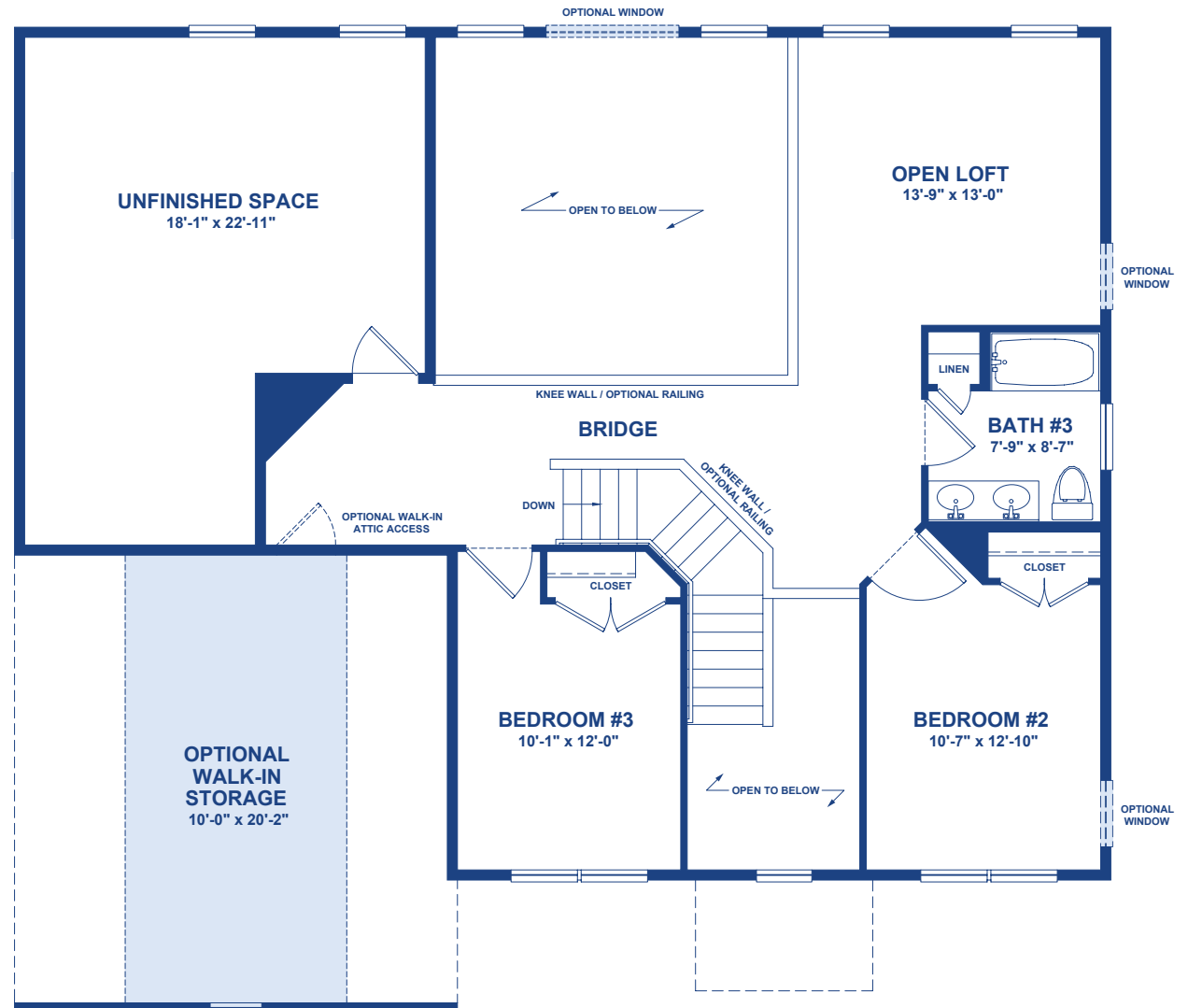
First Floor Plan With Popular **Options** (Heritage Elevation Shown)

 = Optional Feature



Optional Bedroom #4 with Bath
in lieu of Unfinished Space

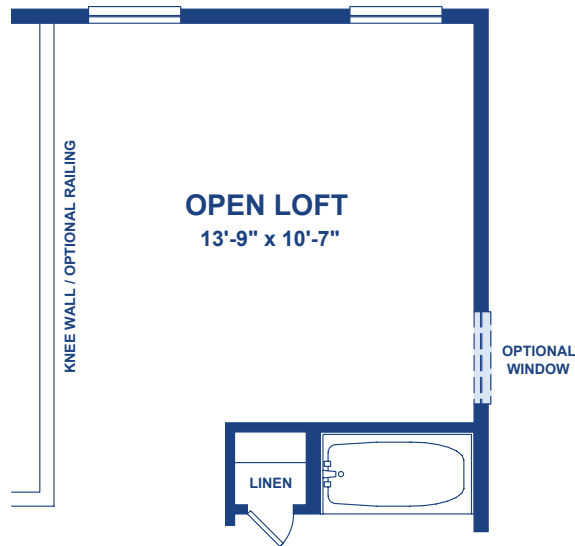
00037



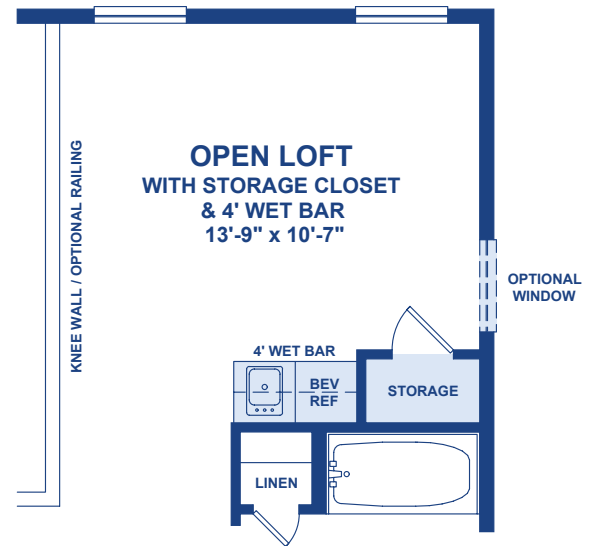
Standard Second Floor Plan
(Traditional Elevation Shown)
with **Optional Walk-in Storage**

00896

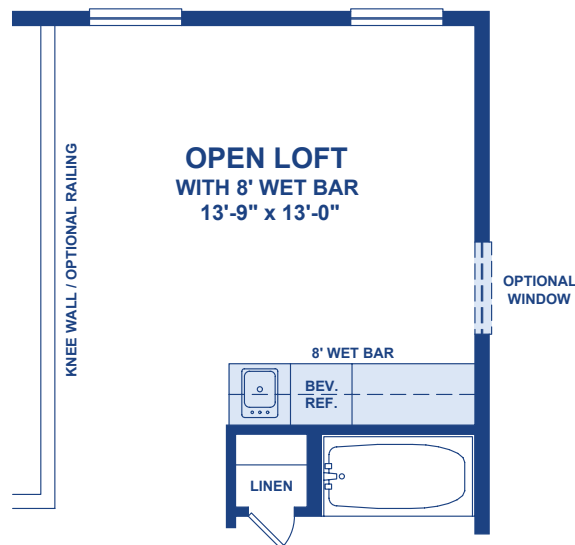
 = Optional Feature



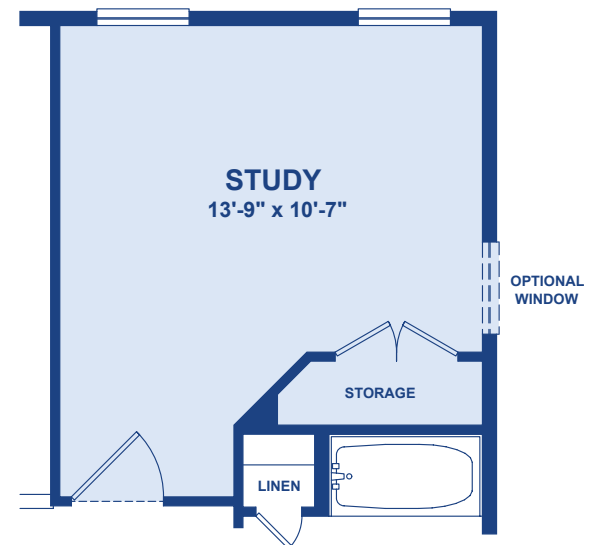
Standard Open Loft



Optional Storage Closet and 4' Wet Bar
00883

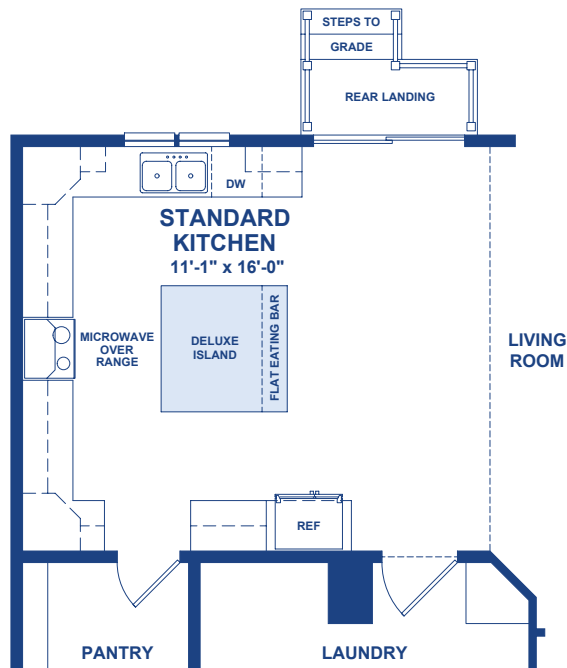


Optional 8' Wet Bar
00007



Optional Study with Storage Closet
in lieu of Open Loft
00927

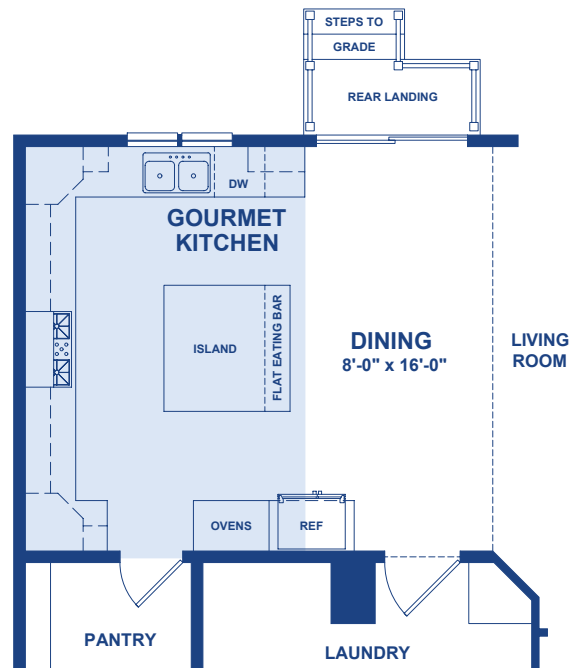
 = Optional Feature



Standard Kitchen

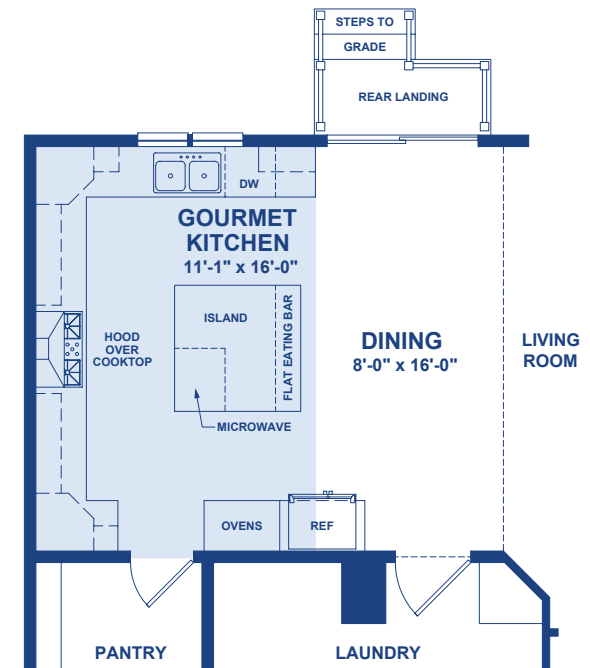
The **Standard** Kitchen includes a standard appliance package with a microwave above a 30" smooth-top electric range and a standard island.

Optional Deluxe Island
00469



Optional Gourmet Kitchen 00400

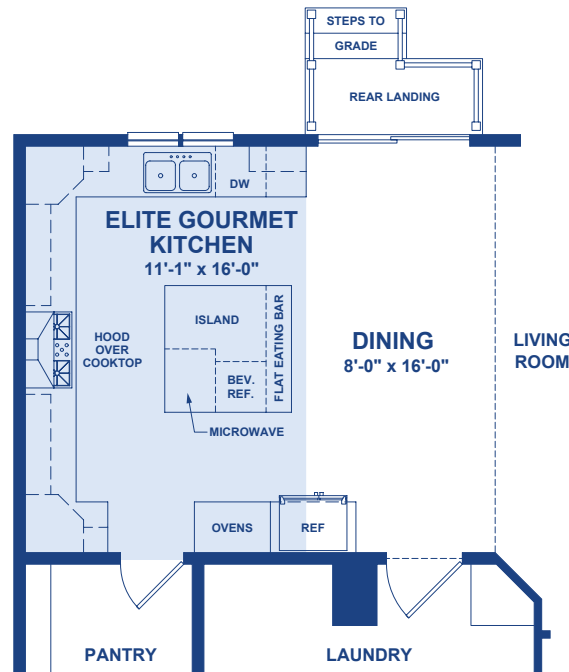
The **Optional** Gourmet Kitchen replaces the 30" range with a 36" electric cooktop with microwave above, adds 30" double wall ovens, and includes a large island.



Optional Gourmet Kitchen with Hood Above Cooktop 00403

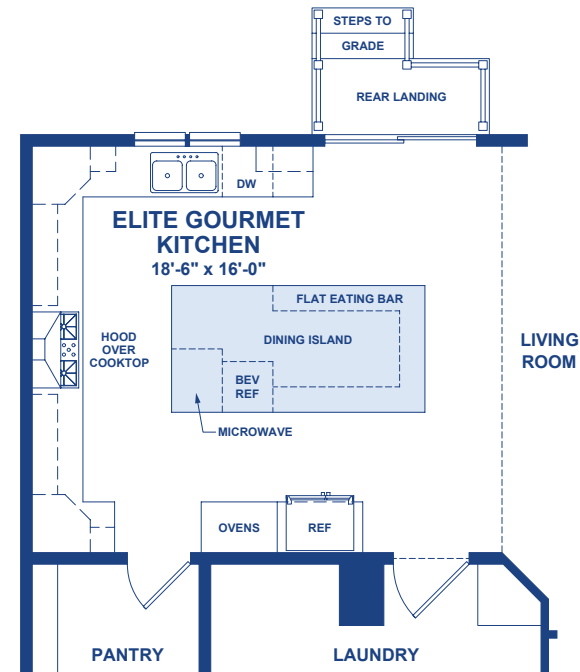
The **Optional** Gourmet Kitchen replaces the 30" range with a 36" electric cooktop, 36" chimney hood, 30" double wall ovens, and a built-in microwave located in the large kitchen island.

 = Optional Feature



Optional Elite Gourmet Kitchen
00401

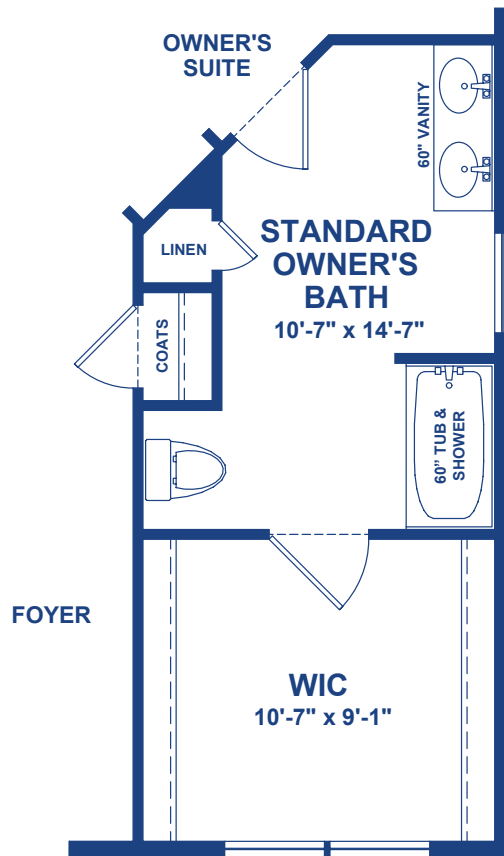
The **Optional** Elite Gourmet Kitchen replaces the 30" range with a 36" cooktop, 30" double wall ovens, large island with built-in microwave, beverage fridge, stained or painted cabinets, 42" upper cabinets, level one cabinetry hardware, select glass cabinet doors, and decorative cabinetry end panels.



Optional Oversized Dining Island
(available only with Elite Gourmet Kitchen)
00431

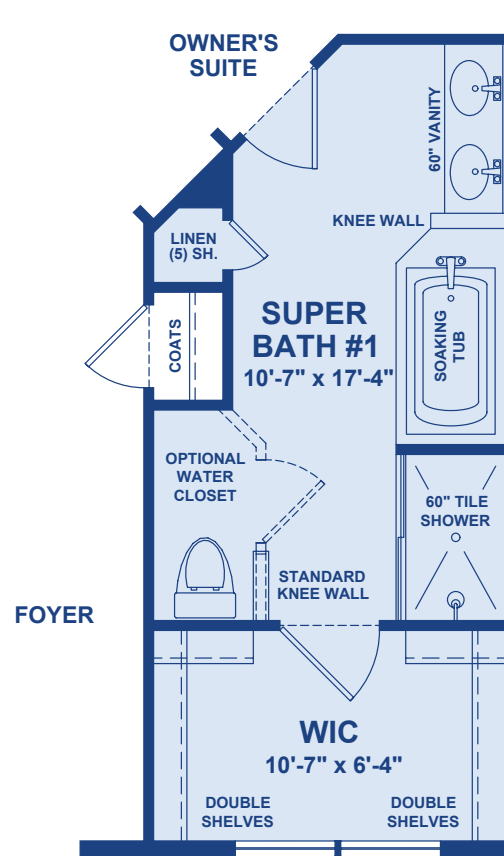
This option includes all of the features of the **Optional** Elite Gourmet kitchen, but changes the island to an oversized dining island.

 = Optional Feature



Standard Owner's Bath

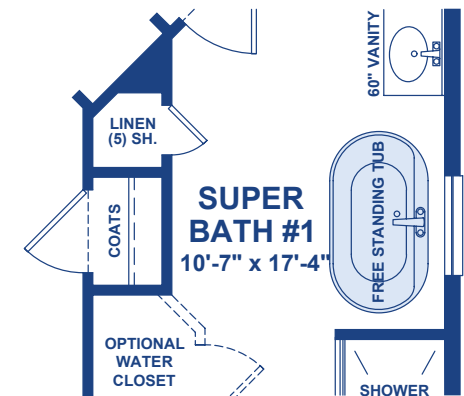
The **Standard** Owner's Bath includes a 60" vanity with cultured marble vanity top, dual sinks, and a fiberglass tub/shower combination



Optional Owner's Super Bath 1 with Soaking Tub

00935

The **Optional** Owner's Super Bath 1 replaces the standard tub/shower combination with a 5-foot shower tiled to 7' high, includes a shower door and a soaking tub with tiled deck.

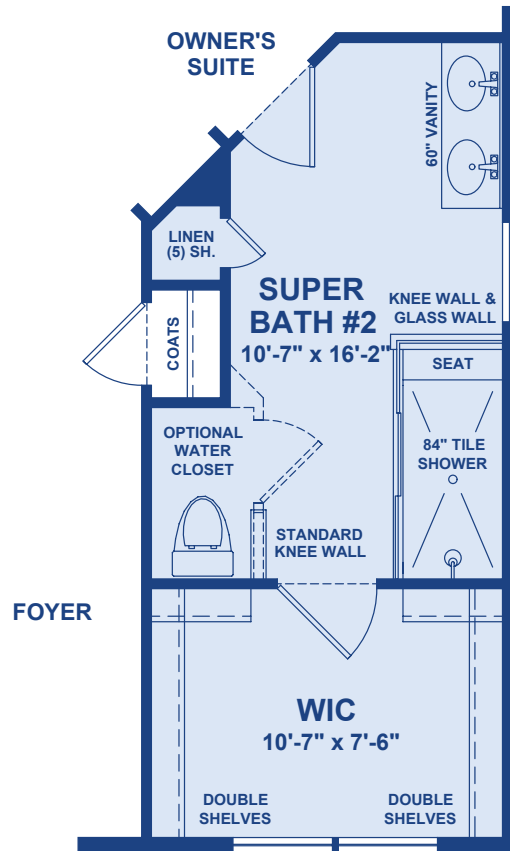


Optional Free-Standing Tub
(available only with Owner's Super Bath 1)

45145

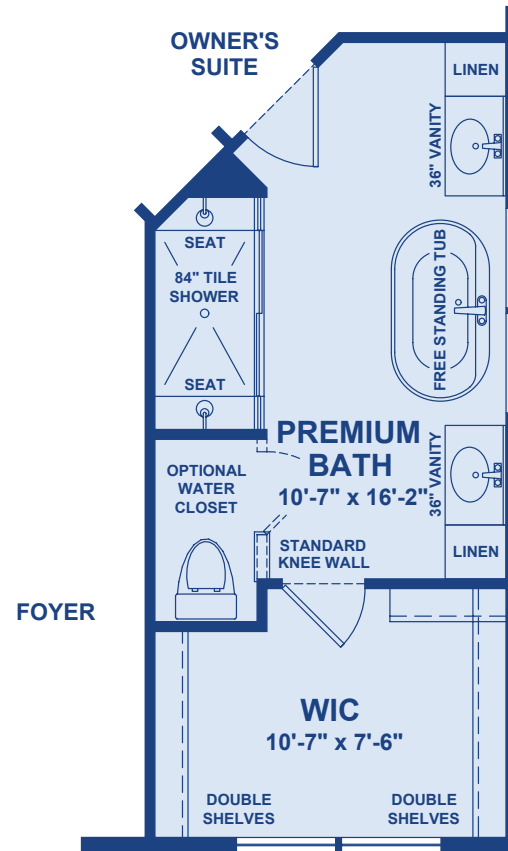
The Super Bath 1 soaking tub with tiled deck may be upgraded to a free-standing tub.

 = Optional Feature



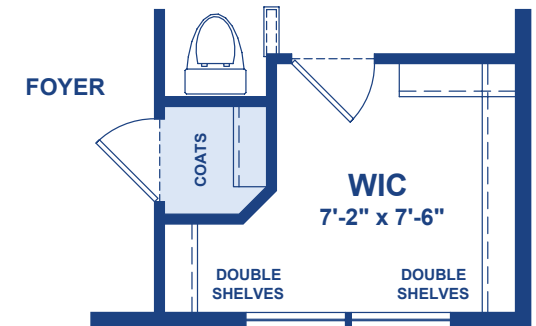
Optional Owner's Super Bath 2
00955

The **Optional** Owner's Super Bath 2 replaces the standard tub/shower combination with a 7-foot shower with bench, tiled to-ceiling, mosaic tiled shower floor, semi-frameless glass shower door, and a damp location recessed light over the shower.



Optional Premium Owner's Bath
00942

The **Optional** Premium Owner's Bath replaces the standard tub/shower combination with a 7-foot shower tiled-to-ceiling, two tiled benches, two shower heads, mosaic tiled shower floor, frameless glass shower door, recessed light over the shower, two 36" vanities with linen storage and a free-standing tub.

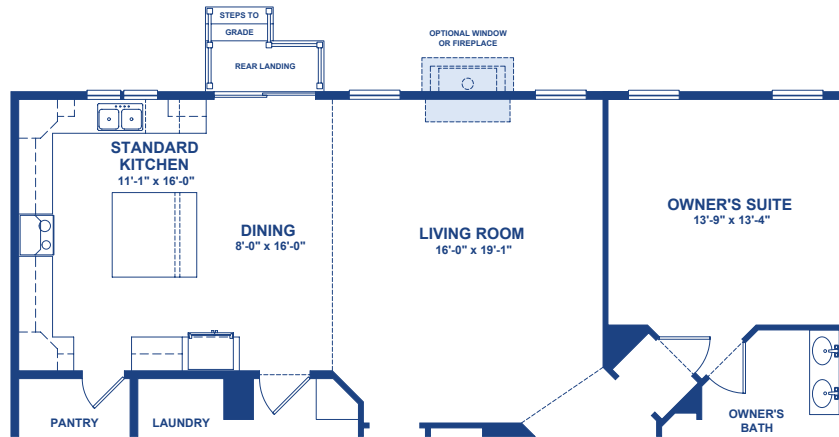


Optional Foyer Coat Closet
(available only with Premium Owner's Bath)
00782

THE RESTON

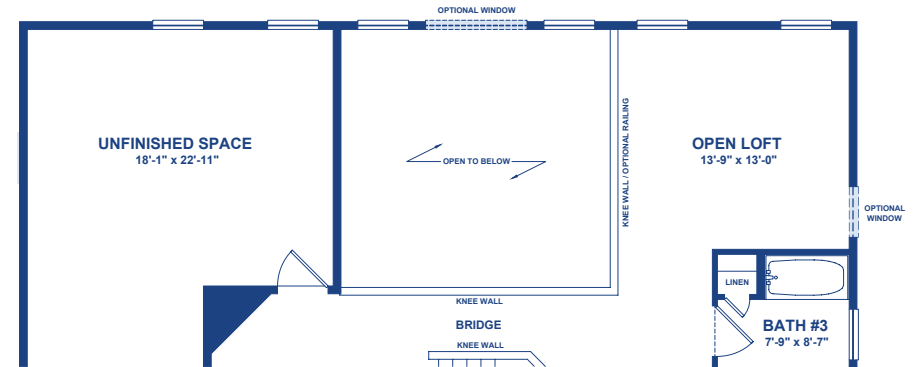
EXTENSION OPTIONS

 = Optional Feature

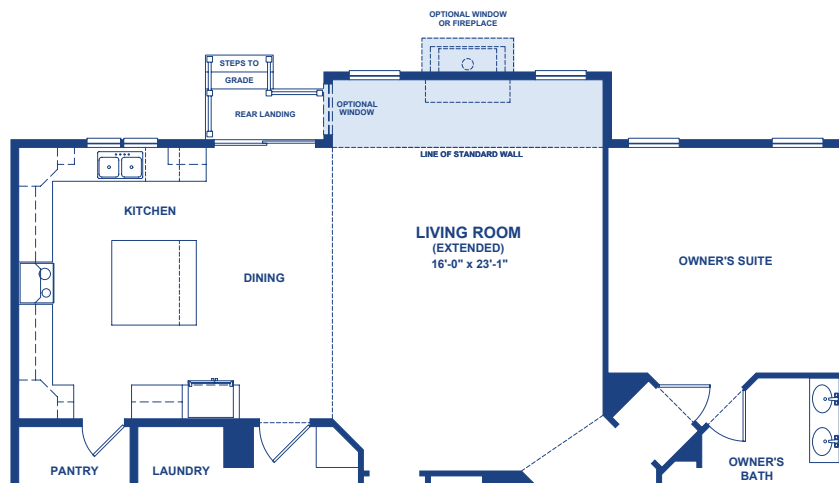


First Floor

Standard First Floor & Second Floors



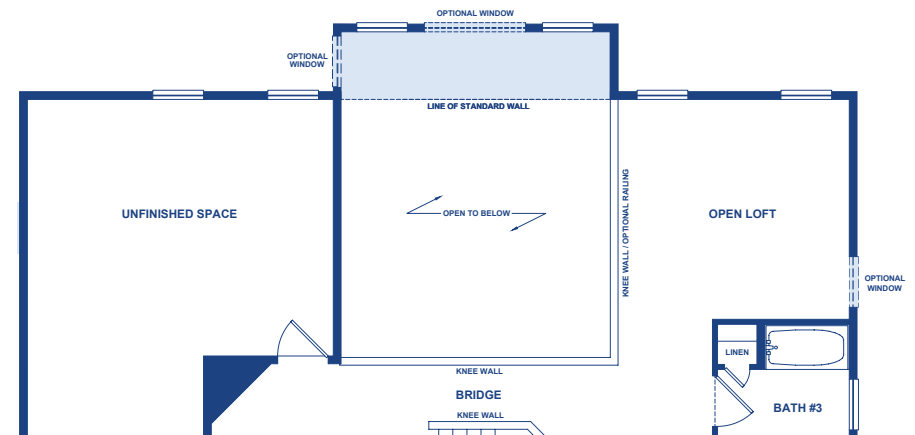
Second Floor



First Floor

Optional 4' Living Room Extension

00445

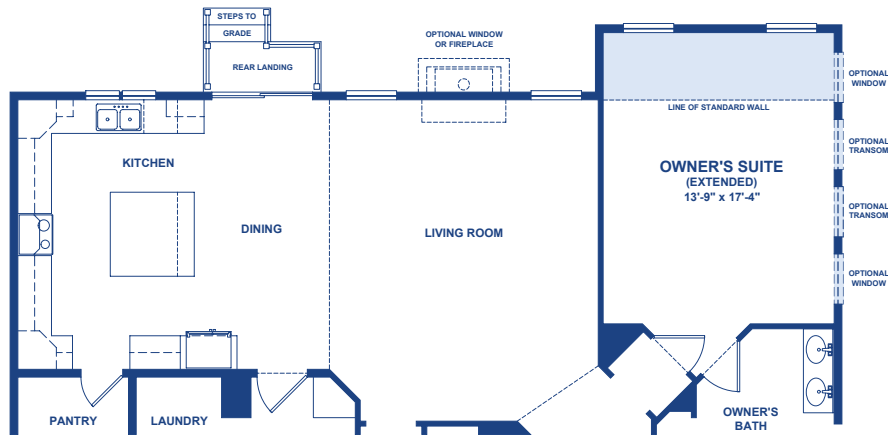


Second Floor

THE RESTON

EXTENSION OPTIONS

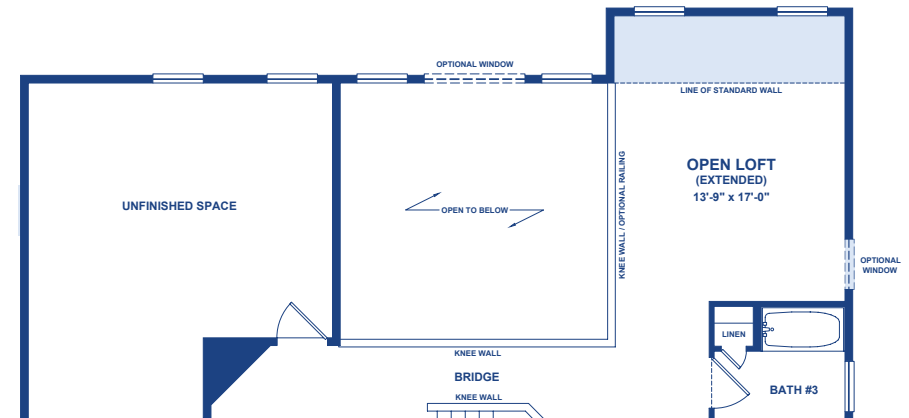
 = Optional Feature



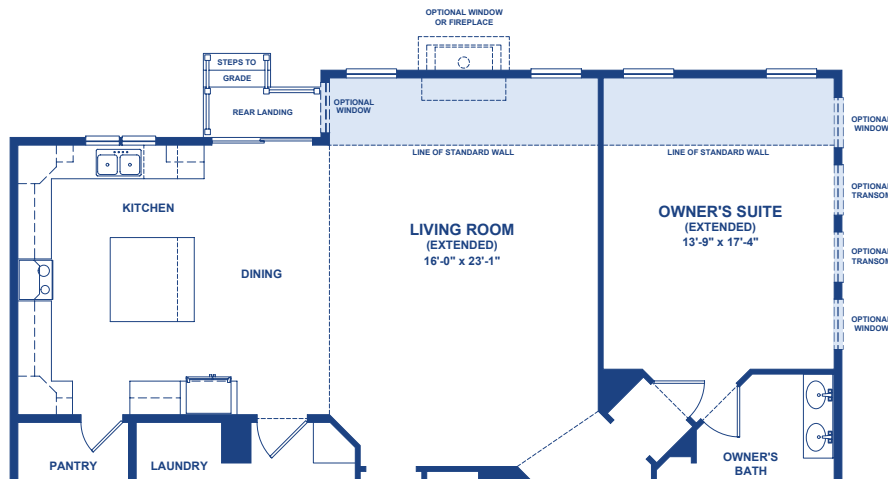
First Floor

Optional Owner's Suite Extension (with Open Loft Extension)

00066



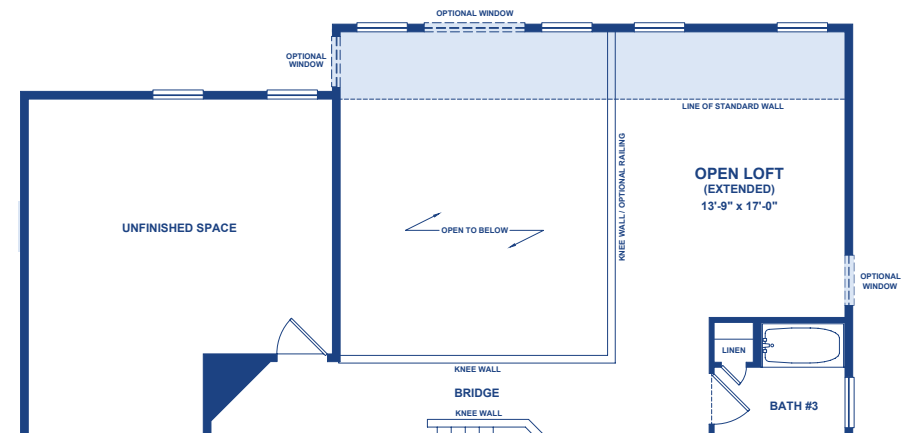
Second Floor



First Floor

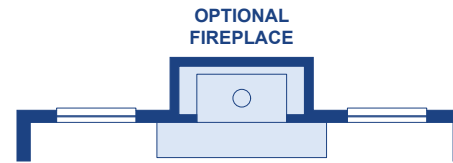
Optional Living Room/Owner's Suite Extension (with Open Loft Extension)

00465

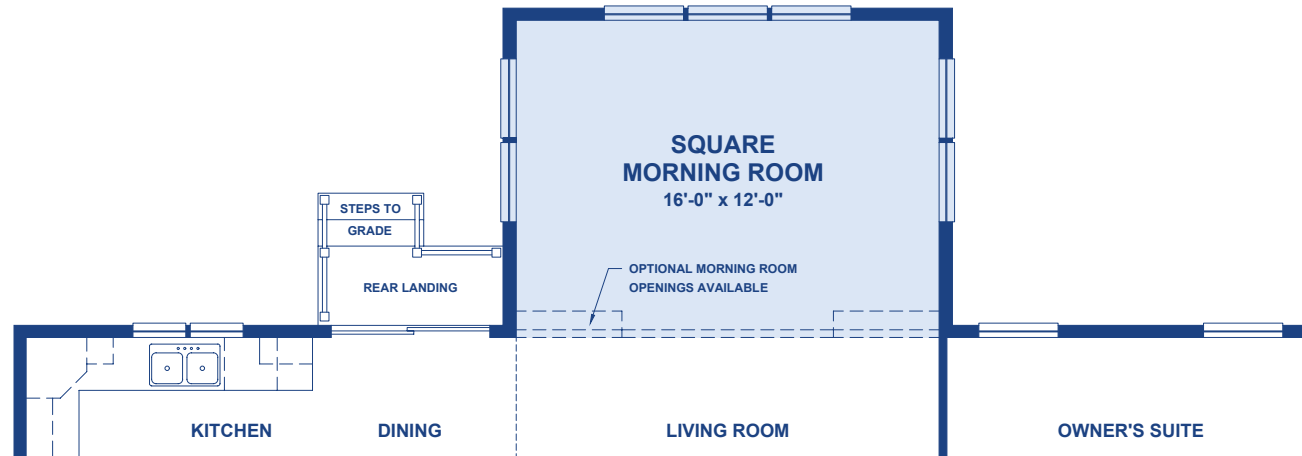


Second Floor

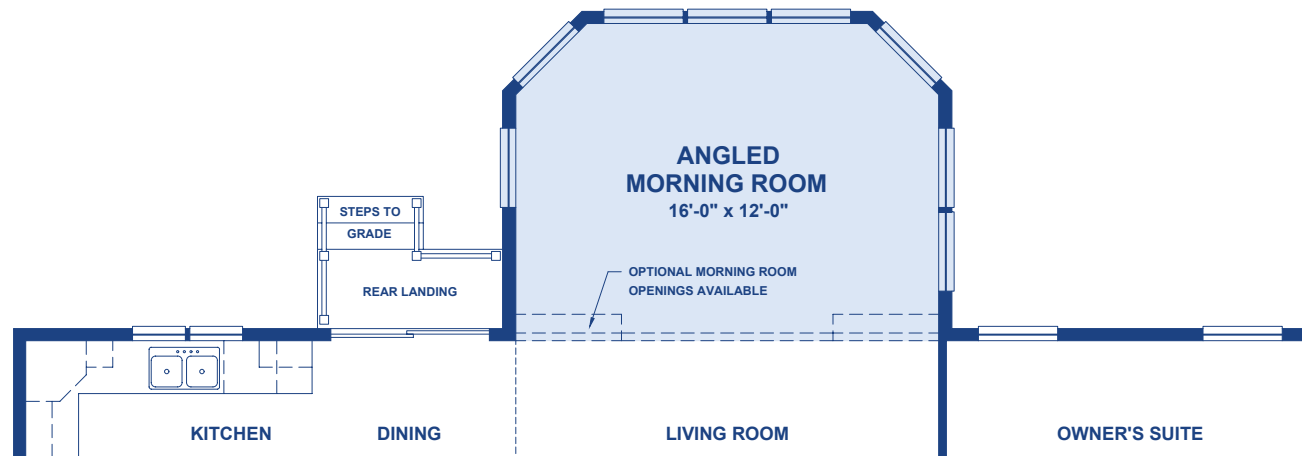
 = Optional Feature



Optional Fireplace
(available only with Square Morning Room)
00283, 00285

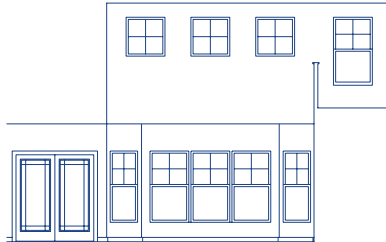


Optional Square Morning Room
00726

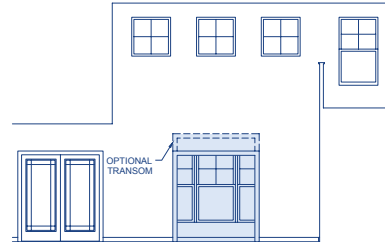


Optional Angled Morning Room
00727

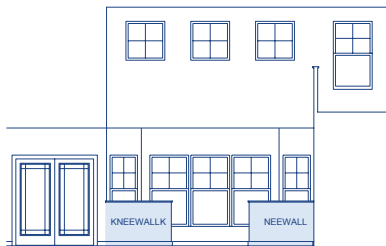
Optional Angled Morning Room Openings (View from Living Room)



Standard Full Opening



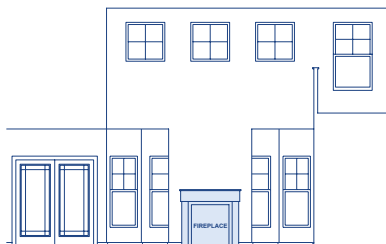
Optional Cased Opening
50118, 50119



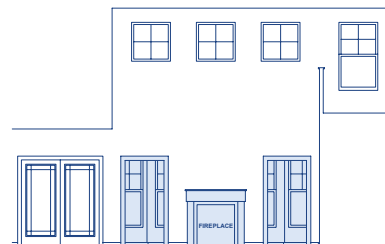
Optional Knee Walls
50117



Optional Book Shelves
50125

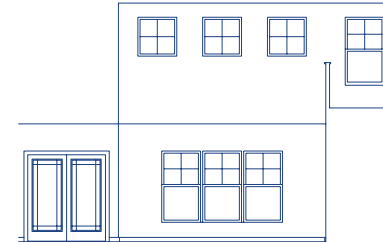


Optional Double-Sided Fireplace
00272

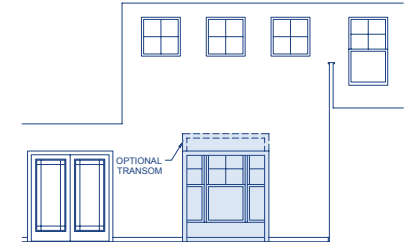


Optional Cased Openings with Double-Sided Fireplace
50114 + 00272

Optional Square Morning Room Openings (View from Living Room)



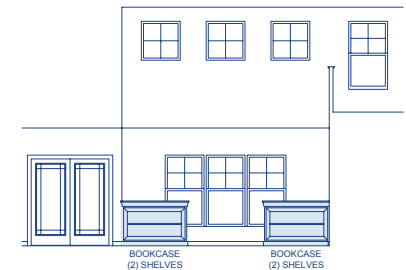
Standard Full Opening



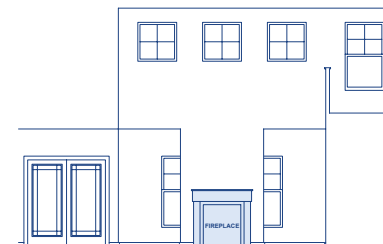
Optional Cased Opening
50118, 50119



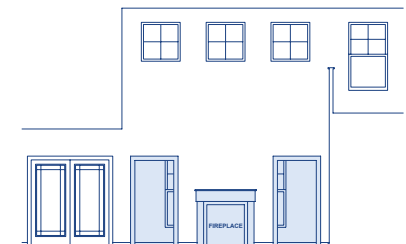
Optional Knee Walls
50117



Optional Book Shelves
50125

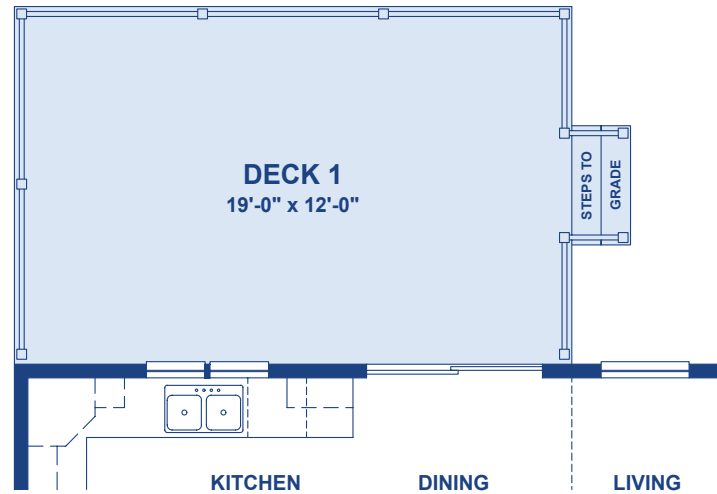


Optional Double-Sided Fireplace
00272



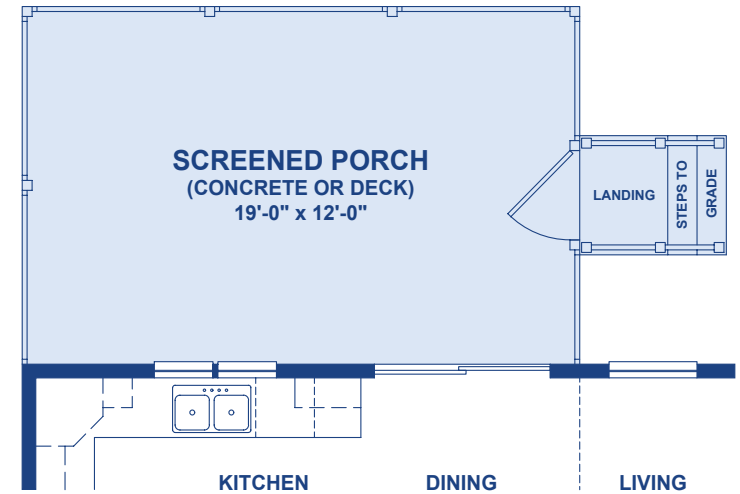
Optional Cased Openings with Double-Sided Fireplace
50114 + 00272

 = Optional Feature



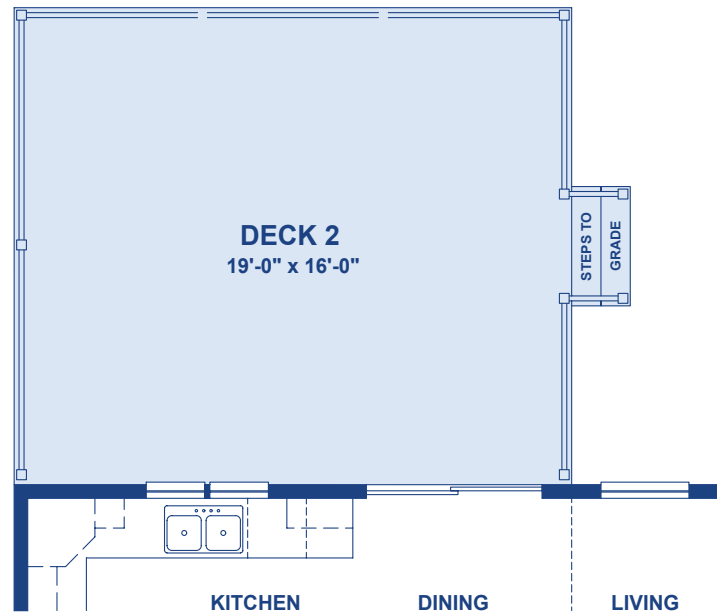
Optional Deck 1

02000



Optional Screened Porch

00820, 00821



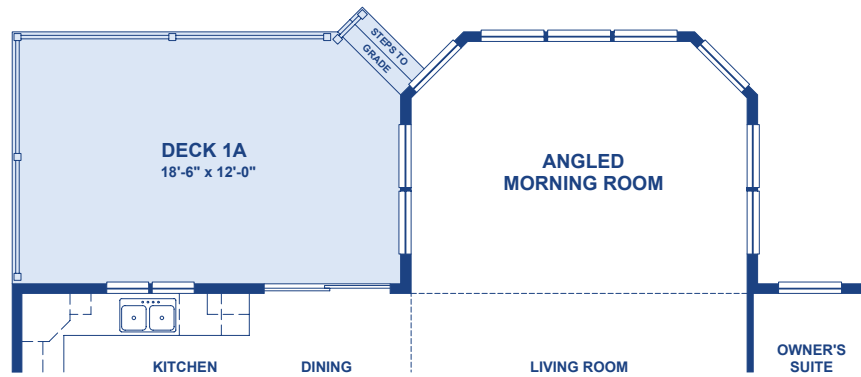
Optional Deck 2

02000

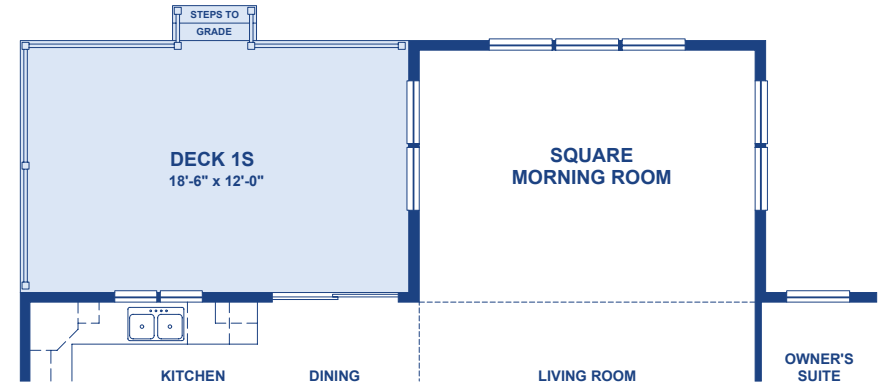
THE RESTON

DECK AND MORNING ROOM COMBINATION OPTIONS

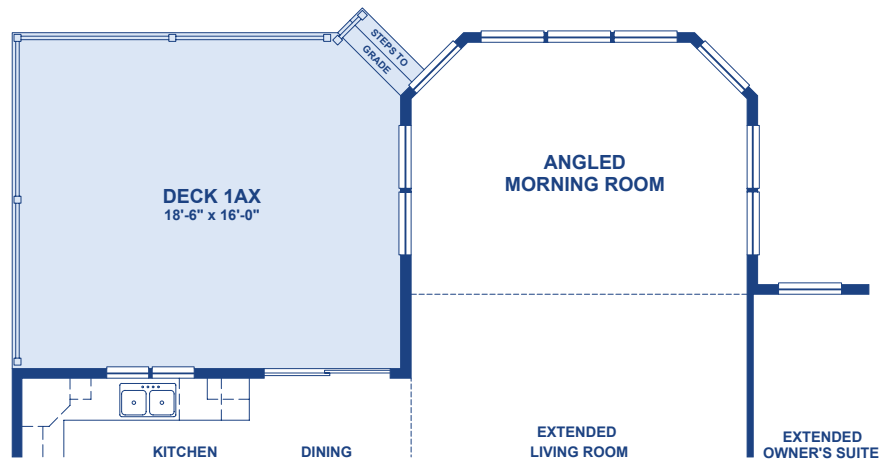
 = Optional Feature



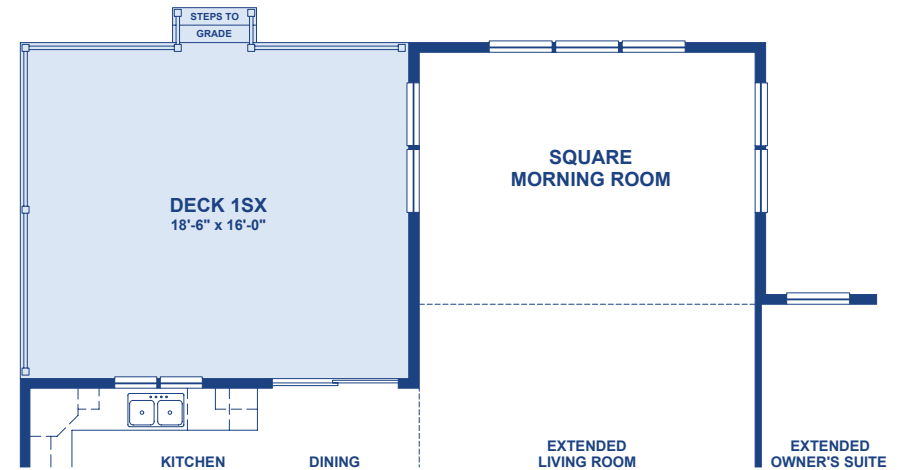
Optional Deck 1A
(for Angled Morning Room)
02010



Optional Deck 1S
(for Square Morning Room)
02020



Optional Deck 1AX
(for Angled Morning Room with Extension)
02004



Optional Deck 1SX
(for Square Morning Room with Extension)
02005

Choose Your Favorite From These
Two Distinctive Exterior Styles

The Heritage Elevation



The Traditional Elevation



NOTE: Plans, specifications and features are regularly updated. Please be sure to view the **LATEST** version of this information at:
aBetterHouse.com

16255 Sussex Highway, Bridgeville, DE 19933

ItsJustaBetterHouse.com • 302-337-0400

Note: Elevations are artist's conception and may vary slightly from precise and most current blue prints and specifications. Elevations shown contain optional features and upgrades. See your New Home Sales Advisor for details on standard features for the Reston. Not all elevations are available in all communities. 2/13/2025