

WELCOME TO CIVIC SQUARE

novo



CENTURY 21
Scheetz



MODERN LIVING IN THE HEART OF CARMEL

Nestled along the North and West sides of the state-of-the-art Civic Square Parking Garage, this new residential development is a cornerstone of the vibrant revitalization of the Civic Square area.

Step into a world of serene elegance, where sleek contemporary architecture and bright, inviting interiors create a space you'll love to call home. Seamless work-from-home amenities, including a stylish common area.

1,316-1,932 | SQFT

2 | COLOR SCHEMES

25 | CONDOS

SECURE | EV PARKING SPACES

Choose from spacious layouts ranging from 1,316 to 1,932 square feet, with pricing starting at \$550,000. Floor plans include 2-bedroom, 2-bath options with dens and expansive 3-bedroom units, each offering refined finishes, towering ceilings, and thoughtful design.



DESIGN PILLARS

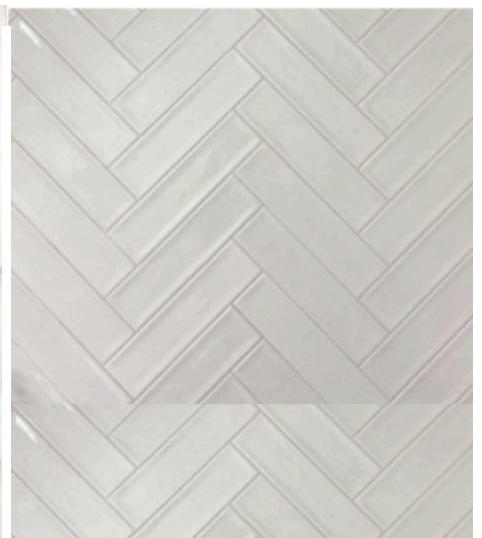
SOPHISTICATED

Meticulous attention to detail and thoughtfully chosen finishes come together to create a space that feels both cohesive and welcoming.



TIMELESS

A carefully selected palette of finishes creates a cohesive and inviting atmosphere, where every detail is thoughtfully considered.



OPTION A

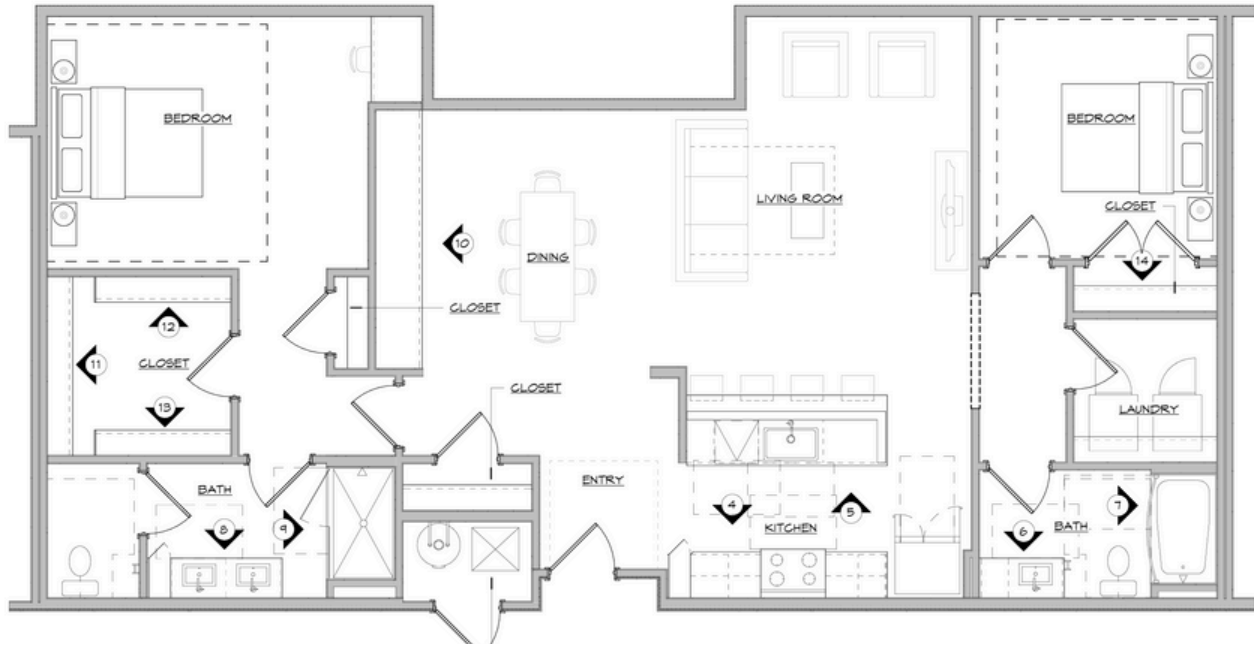


OPTION B



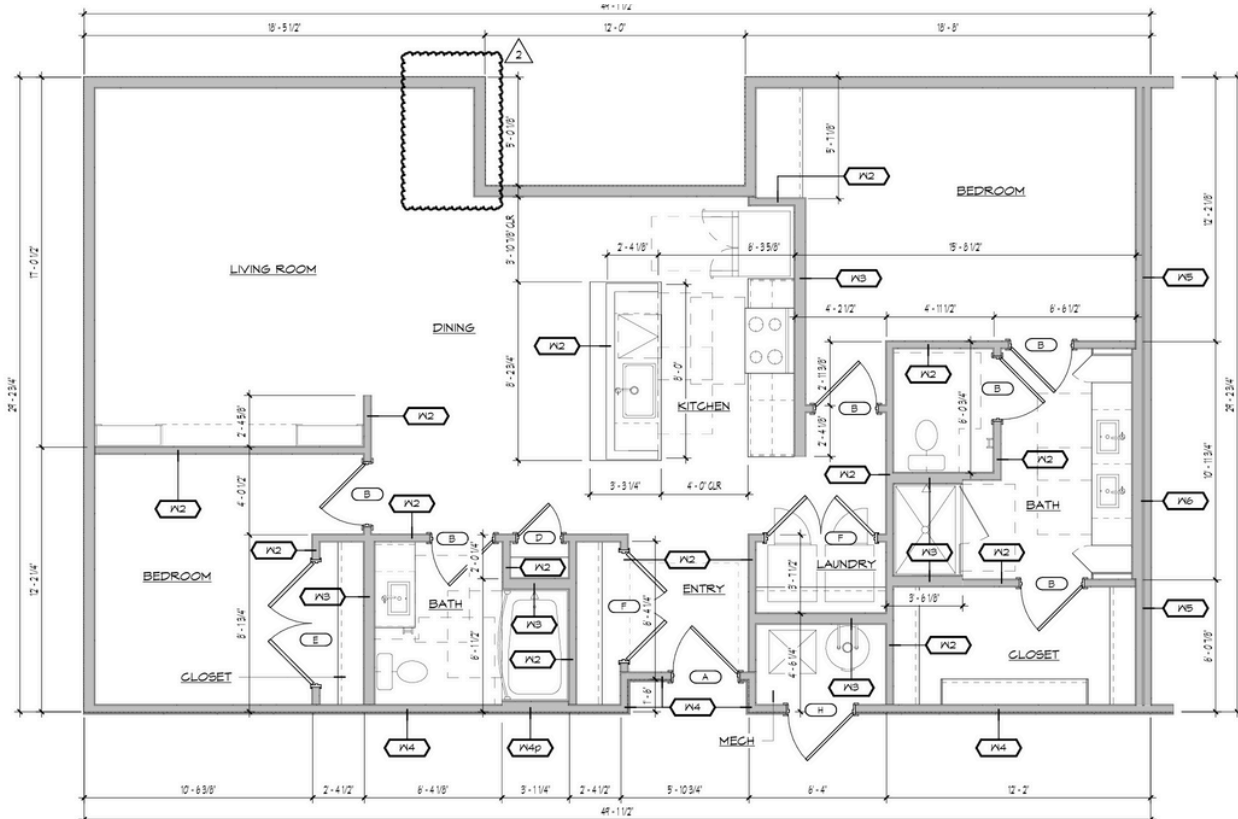
B1 Floor Plan

1433 SQ. FT. | Unit 106



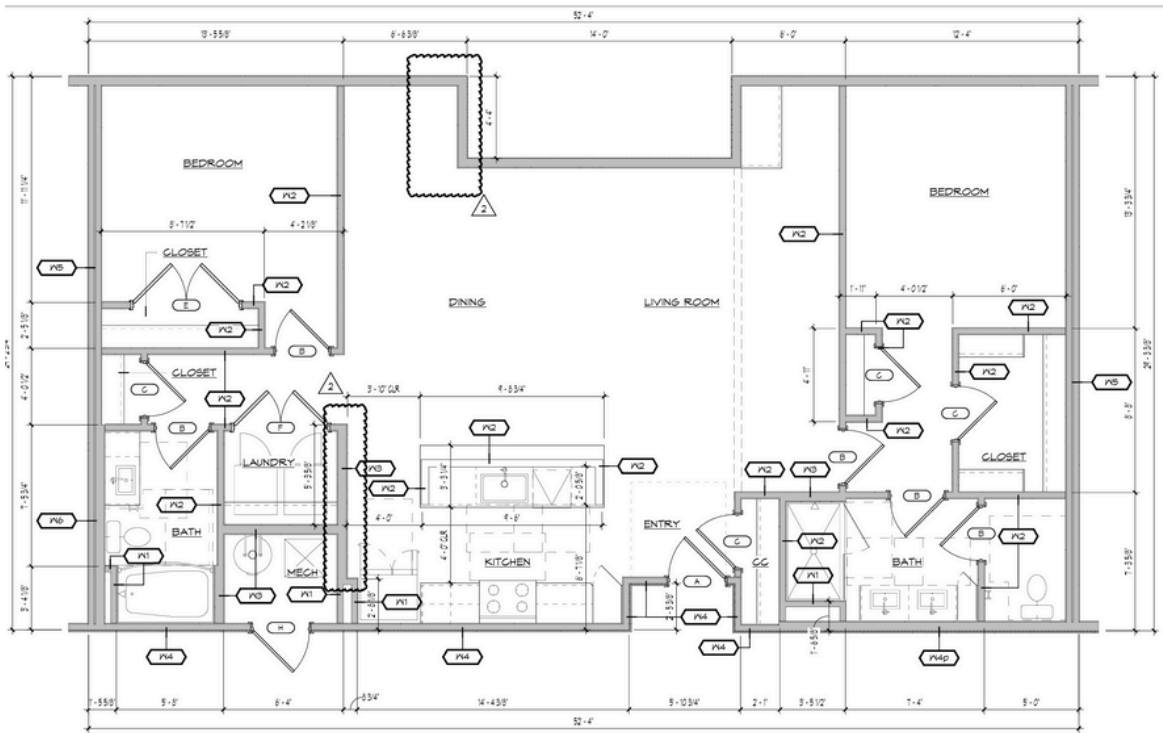
B2 Floor Plan

1316 SQ. FT. | Units 201, 301, and 401



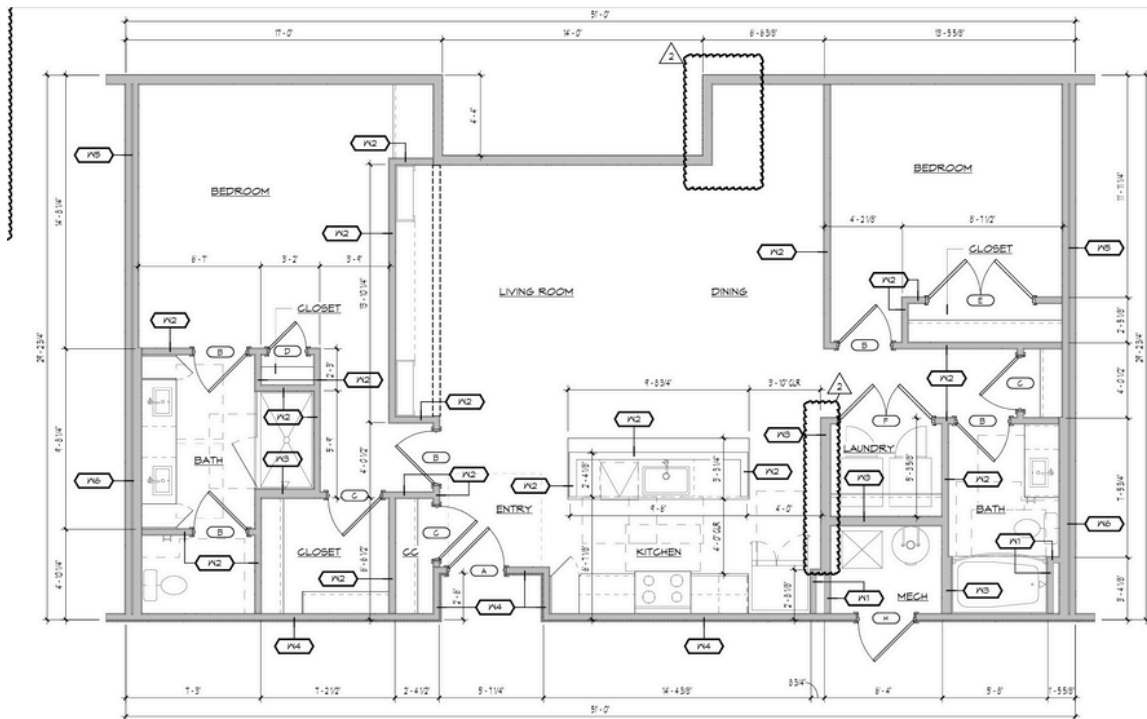
B3 Floor Plan

1412 SQ. FT. | Units 103, 203, 304, and 403



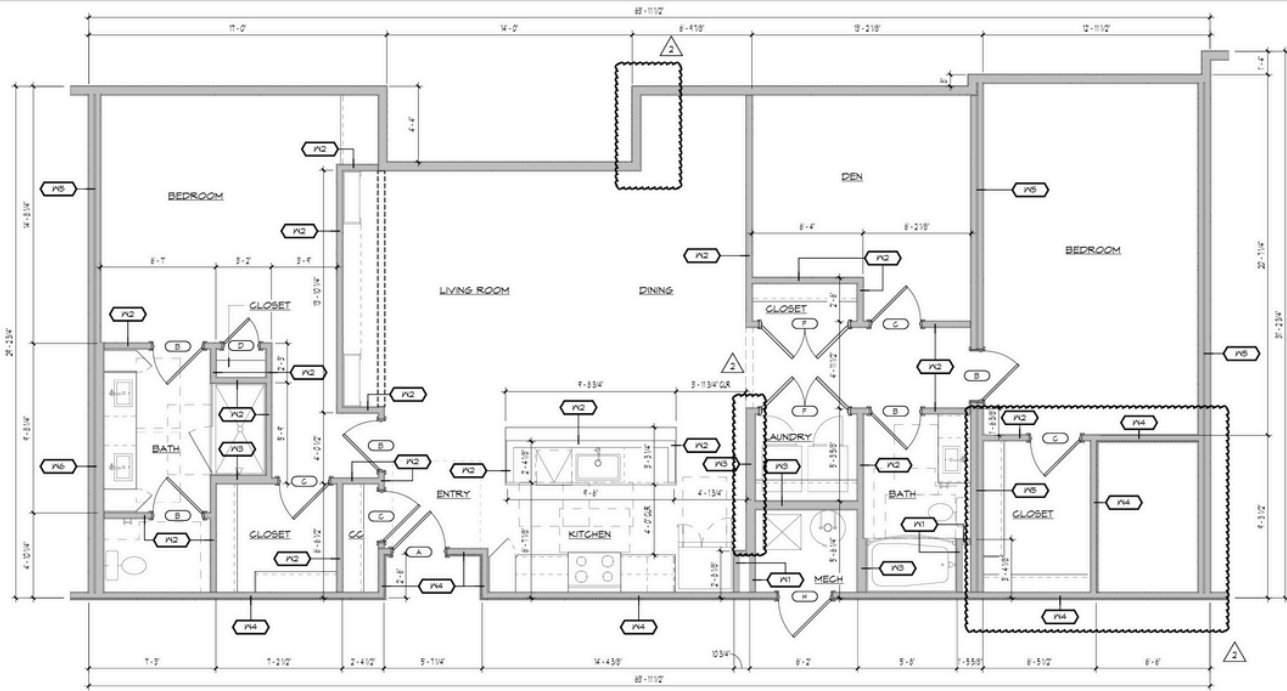
B4 Floor Plan

1374 SQ. FT. | Unit 102



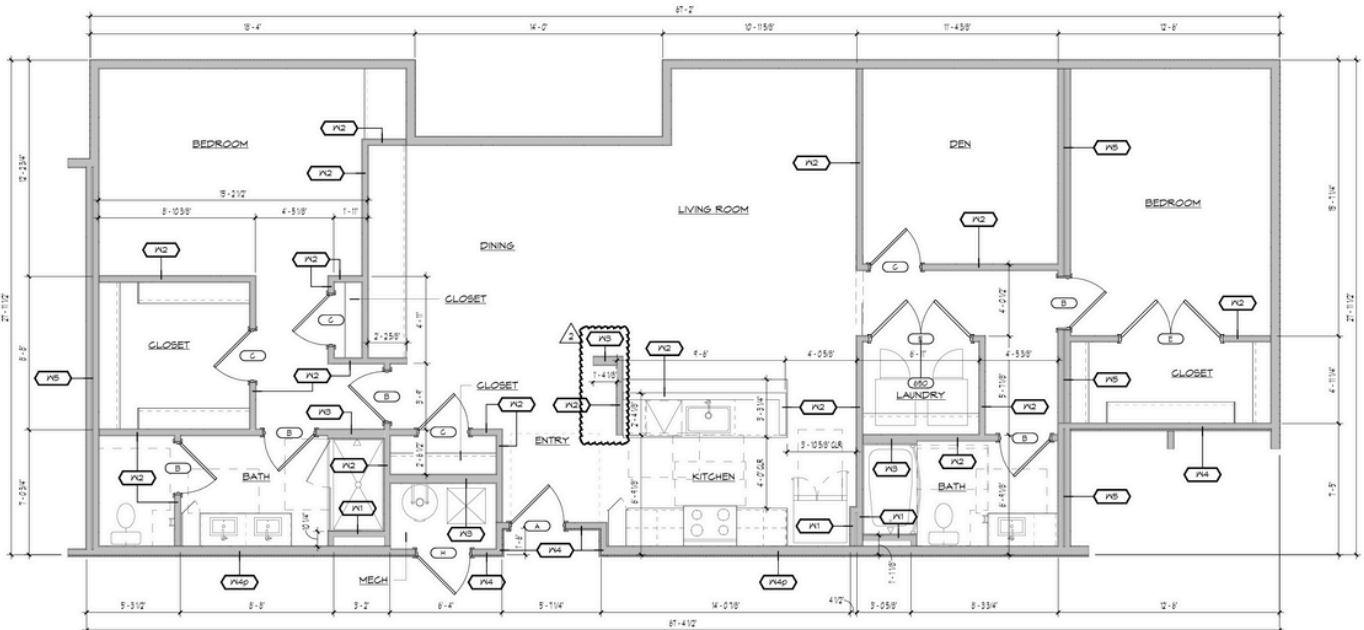
B5 Floor Plan

1701 SQ. FT. | Units 202, 302, and 402



B6 Floor Plan

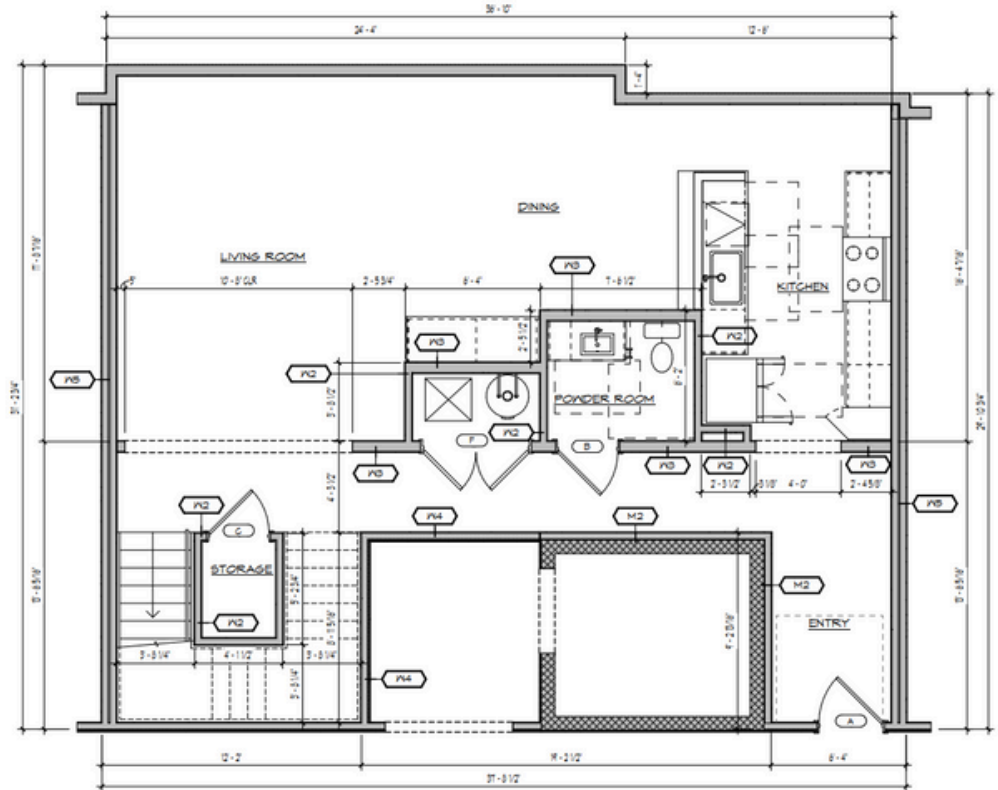
1671 SQ. FT. | Units 206, 307, and 406



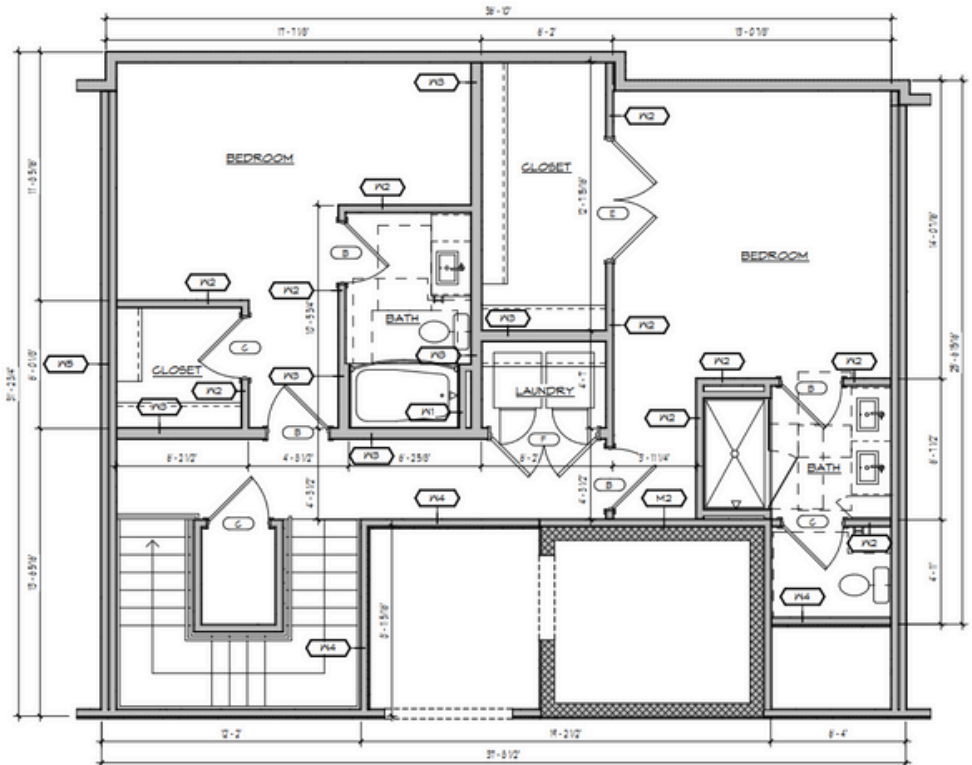
B7 Floor Plan

1810 SQ. FT. | Unit 303

1st Floor



2nd Floor



“Public art, like this new mosaic, is so important to a city’s quality of life, not simply because it is nice to look at, but because it provides an opportunity for our residents and visitors to experience unique and inspiring art on a daily basis. This reflects the city’s commitment to integrating art into urban development, as seen in the “Cosmic Flow” mosaic by Nancy Keating on the Civic Square garage.”

- Jim Brainard, Former Carmel Mayor

CHECK OUT THE...

LOBBY/COFFEE BAR

SERENE



LOBBY LIGHTING



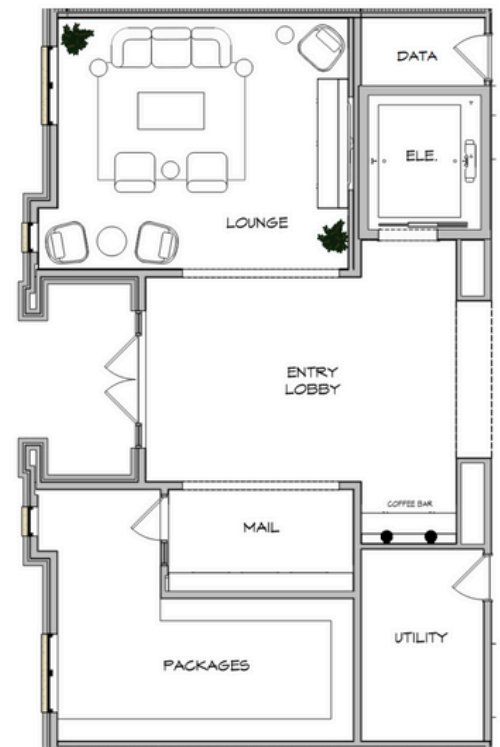
FLOOR TILE



COFFEE BAR SCONCE



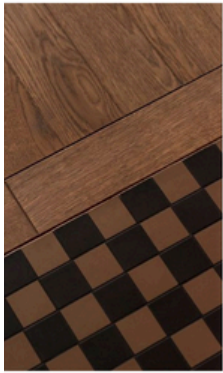
GENERAL PAINT



First Floor

LONGUE

ELEGANT



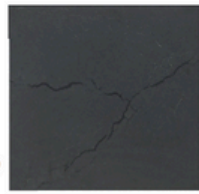
FLOOR TILE



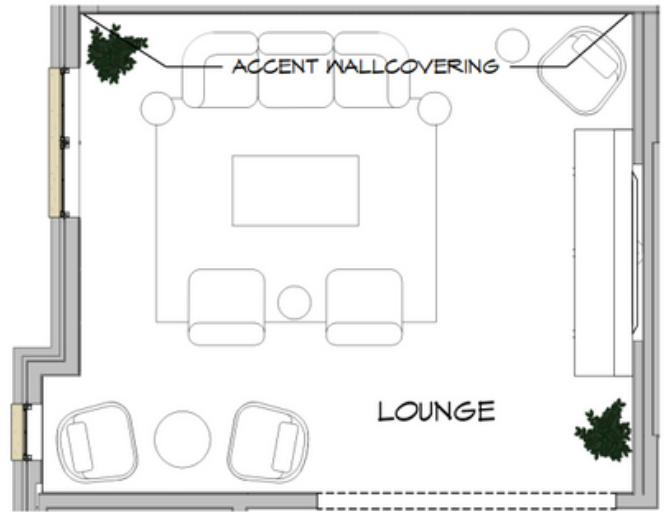
CABINETRY



ACCENT WALL TILE



COUNTERTOP



LOUNGE FLOOR PLAN



ACCENT LIGHTING



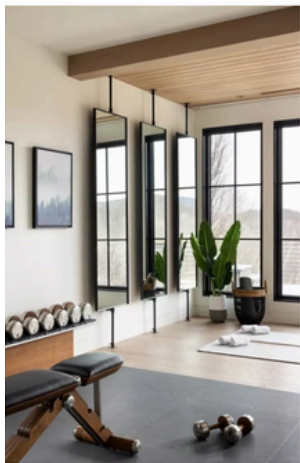
TRAY CEILING ACCENT LIGHTING



ACCENT WALLCOVERING

FITNESS

OPULENT



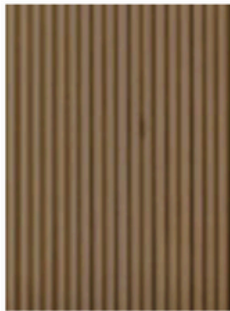
MIRROR INSPIRATION IMAGE



HOOKS



GENERAL PAINT



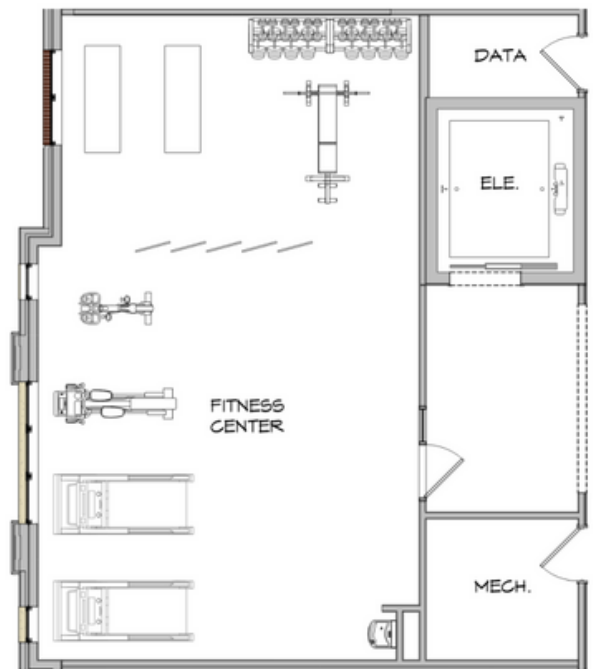
ACCENT CEILING PANEL



WALL TILE



ACCENT WALLCOVERING



Second Floor

NOW TAKING RESERVATIONS

CONDOMINIUMS FEATURES:

- Elegant, modern architecture that complements Carmel's refined downtown streetscape
- Beautiful use of high-quality materials and thoughtful urban design
- Secure, gated garage parking with secure EV-ready spaces for residents
 - Sustainable features, including solar canopies, LED lighting, and bike storage
- Artistically designed masonry façades with custom mosaic tilework
- Integrated into Carmel's walkable core—steps from shopping, dining, and the Arts & Design District
- Part of a transformative redevelopment project focused on smart growth and connectivity



GURVINDER GILL
REALTOR®
(317) 730-5528
gill@C21scheetz.com

