



BUILD  
PACKAGE

# The BAYBERRY



## JOHN LIBBY *Construction*

This charming 3-bedroom, 2.5-bath Cape-style home is designed for both comfort & functionality. The first floor features an open-concept kitchen, living, and dining area, a primary suite with a spacious closet, a separate laundry room, mudroom, half bath, and a large pantry for extra storage. Upstairs, two generously sized bedrooms share a full bath. Bonus space above the garage offers room for future expansion. Blending cozy charm with modern convenience, this home is perfect for practical, everyday living.



1,787 Sq Ft



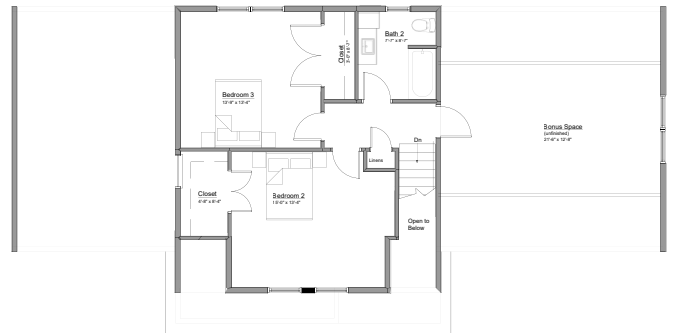
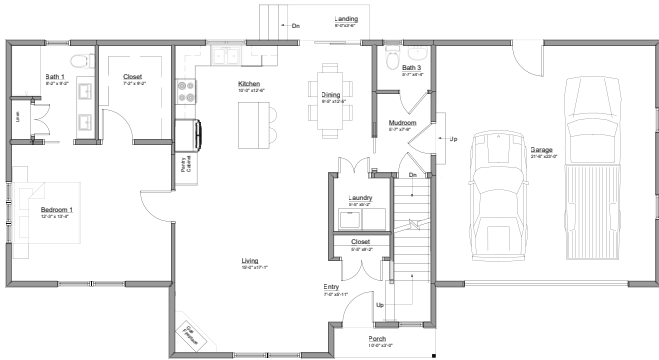
3 Bedroom



2.5 Bathroom



2 Car Garage



Front Elevation



Right Elevation



Left Elevation



Rear Elevation

**CONTACT US**



(207) 295-2042



WWW.JOHNLIBBYCONSTRUCTION.COM