

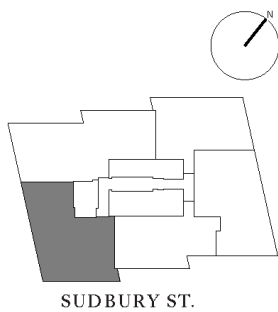
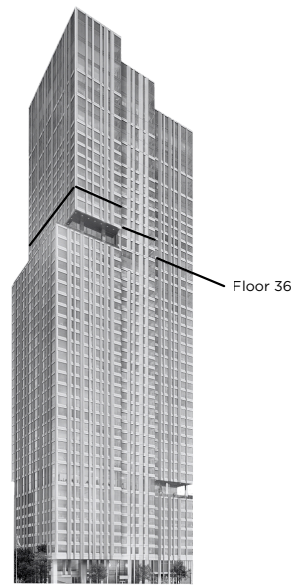
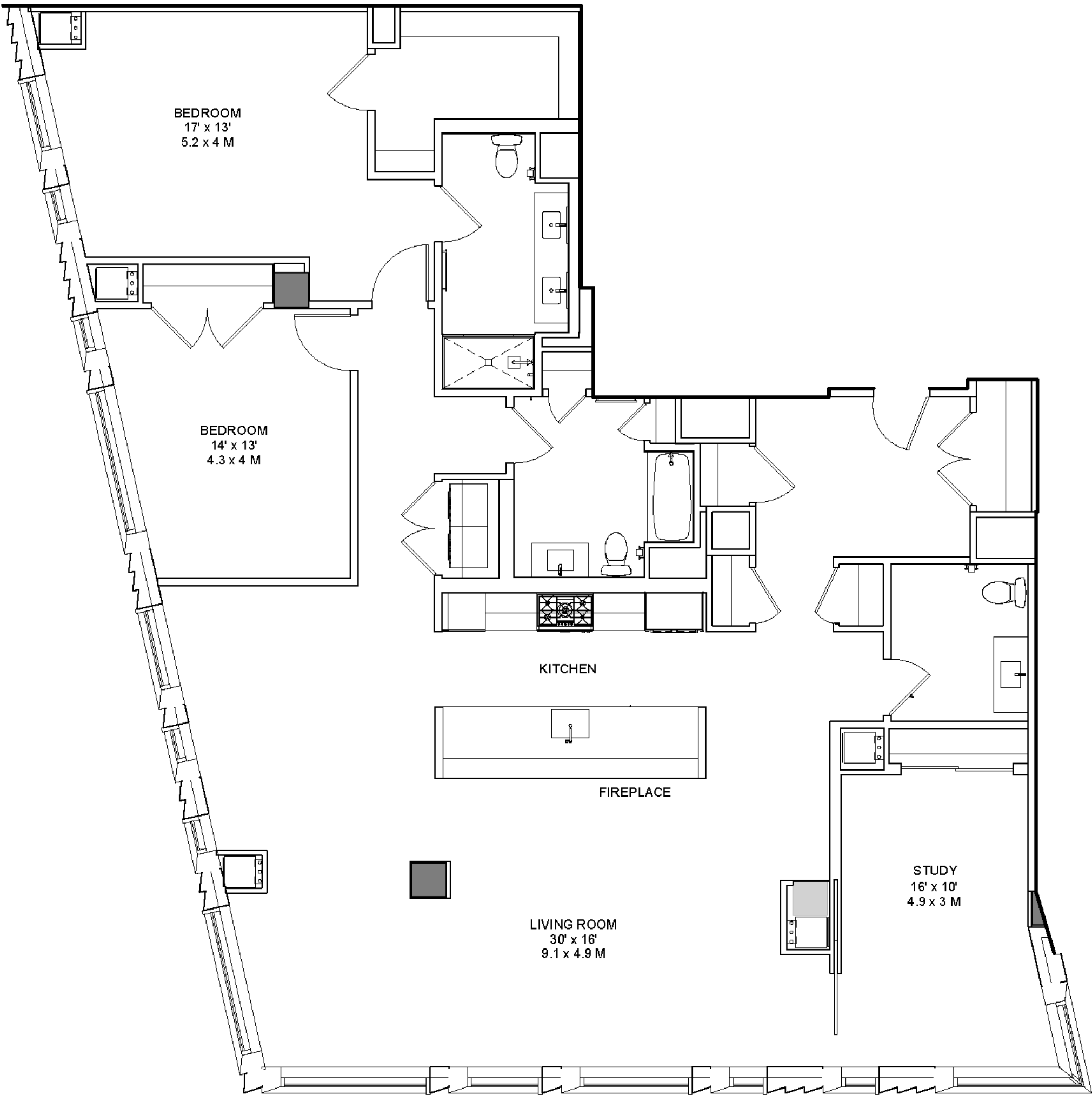
THE  
S U D B U R Y  
CONDOMINIUMS

02 Residence

Floors 36-47

2315 SF - 215 SM

Two Bedrooms + Den  
/ Three Bedrooms  
Two Bathrooms  
One Powder Room



thesudbury.com  
residences@thesudbury.com



These are preliminary unit plans for informational purposes only. All configurations, dimensions, views, materials, and features shown are approximate and are subject to change without notice or obligation. Variations may occur depending, for example, on construction variances, location of unit and/or mechanical or structural requirements. Certain plans may show furniture layouts for illustrative purposes, but no furniture is included with the purchase of any unit. Depictions of household appliances are for illustrative purposes only. The final unit depictions in the condominium floor plans incorporated in the condominium documents may not be as shown in these preliminary plans. The Seller/Owner of The Sudbury is committed to full compliance with all applicable laws and regulations that prohibit discrimination in the sale or lease of residential units on the basis of race, color, religion, sex, handicap, familial status, or national origin.

National  
REAL ESTATE ADVISORS

HYM

TCC